



Eave Strut Brochure Galvanized

Information

Members

The members represented in this publication are typically produced in G60, grade 50 cold formed steel. G90 is available upon request but may require longer lead times.

Documentation

This document is subject to change without notice. Please contact B&M Metals to make sure that you have the latest edition of this document.

Service Holes

Service holes in studs can be punched upon request. In the event that spacing for the service holes is not specified, they will be punched on 3 foot centers. Please contact B&M Metals for custom hole spacing or more details.

Steel Members Disclaimer

Use with product tables, details, and preliminary estimating only

1. Scope / Intended Use

- Reference use only. This brochure is a general product reference for preliminary review, estimating, and coordination. It is not a sealed design package.
- Engineer verification required. All spans, reactions, member adequacy, deflection, stability, bracing, connections, anchorage, and foundation requirements shall be verified by a licensed Professional Engineer in the project jurisdiction.
- Project-specific conditions govern. Final member selection depends on actual loads, unbraced length, end conditions, diaphragm action, serviceability limits, and governing code requirements.

2. Design / Fabrication

- Codes and standards. Verify design using the governing code and applicable standards, including current editions of AISC 360, ASCE/SEI 7, and MBMA references where applicable.
- Material and availability. Dimensions, grades, coatings, lengths, hole patterns, finishes, tolerances, and availability may vary by mill, supplier, and production schedule. Specifications are subject to change without notice.
- Fabrication and field changes. Shop drawings, weld procedures, bolt selection, detailing, substitutions, and field modifications must be reviewed and approved by the Engineer of Record before use.

3. Liability / Revision Control

- No warranty of fitness for design. Listed members and properties are provided without guarantee that they satisfy a specific building, loading case, or code condition.
- Tolerance / liability limitation. Sweep, camber, twist, finish variation, and minor dimensional variation may occur within accepted manufacturing tolerances.
- Confirm latest revision. Verify the latest brochure revision and current project criteria before ordering, engineering, or installation. Contact B&M Metals for updated data or project-specific support.

Suggested Reference Standards

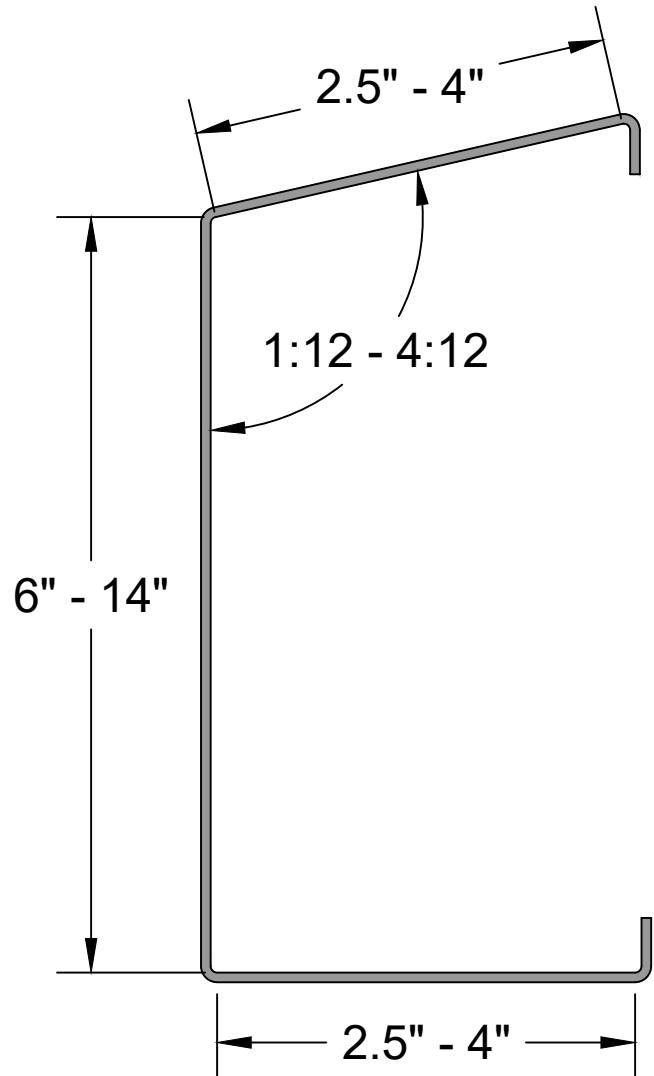
- AISC 360-22 - Structural steel design
- ASCE/SEI 7-22 - Design loads
- MBMA Metal Building Systems Manual - 2024
- Applicable ASTM material specs per project documents

Other Notes

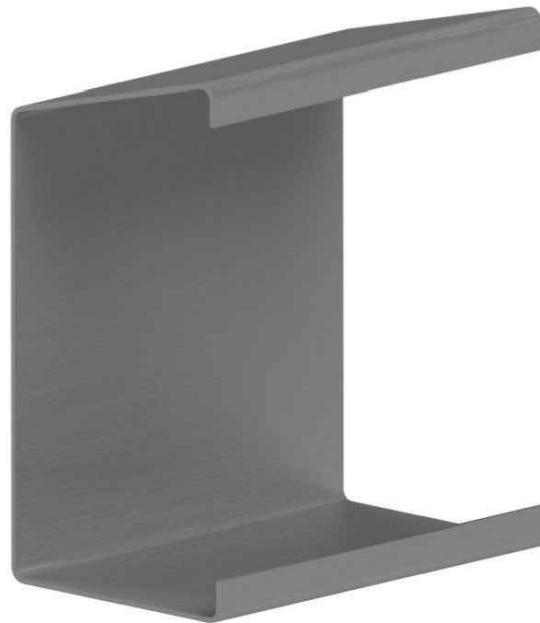
- Member weights and section properties are nominal unless noted otherwise.
- Connection details shown elsewhere are conceptual unless sealed by the Engineer of Record.
- Do not scale drawings. Use written dimensions only.
- Contact B&M Metals for updated data, custom members, or project support.

Steel Members Documentation

Custom Eave Strut



* Angle of Eave Strut needs to be specified.
Example has a $\frac{3}{12}$ pitch.



6195 Hwy 52 East
Murrayville GA, 30564
www.BMMetals.com
Office: (706) 864-6068
Fax: (706) 864-2147

Member specs and limits

Name:	DepthEFlange
Depth:	6" - 14"
Flange:	2.5" - 4"
Lip:	.5"
Lengths:	6' - 60'
Gauges:	16,14,12

Name Breakdown

1050L162 - 43

Depth in Inches 1050 = 10.50"	Member Key	Flange Height 162 = 1.625"	Mill Thickness
----------------------------------	------------	-------------------------------	----------------

Member Key

- S = Stud (C Shaped)
- L = Lintel (L Shaped)
- T = Track (U Shaped)
- W = I-Beam (I Shaped)
- E = Eave Strut (C Shaped)
- D = Double Eave Strut
- A = Angle (2 Legs, 1 Angle)
- F = Hat (Top Hat Shaped)
- B = Box (Rectangle Shaped)
- FI = Strap/Flat (Flat Shaped)
- Z = Zee (Z Shaped)

Mill - Gauge	Bend Radius
25 mill = 24 gauge	.0764
30 mill = 22 gauge	.0796
33 mill = 20 gauge	.0764
43 mill = 18 gauge	.0712
54 mill = 16 gauge	.0849
68 mill = 14 gauge	.1069
97 mill = 12 gauge	.1325

* All members shown in 14 gauge to show detail

CUSTOM_EAVE_STRUT

Steel Members Documentation

6" x 3.5" Eave Strut Single Slope



6195 Hwy 52 East
Murrayville GA, 30564
www.BMMetals.com
Office: (706) 864-6068
Fax: (706) 864-2147

Member specs and limits

Name:	600E350
Depth:	6"
Flange:	3.5"
Lip:	.5"
Lengths:	6' - 60'
Gauges:	16, 14, 12

Name Breakdown

1050L162 - 43

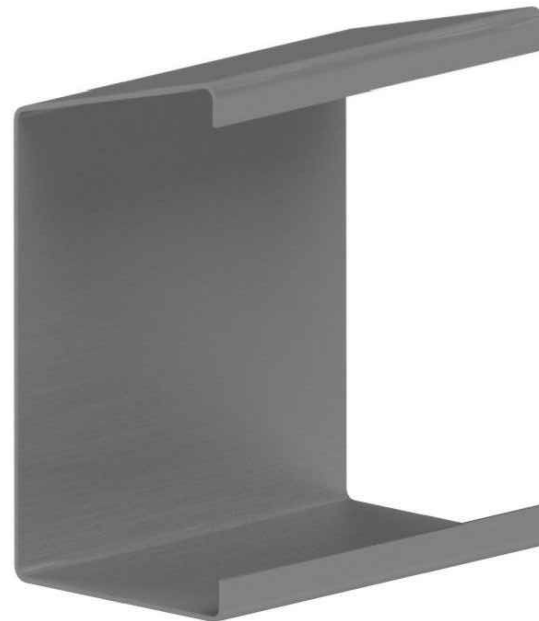
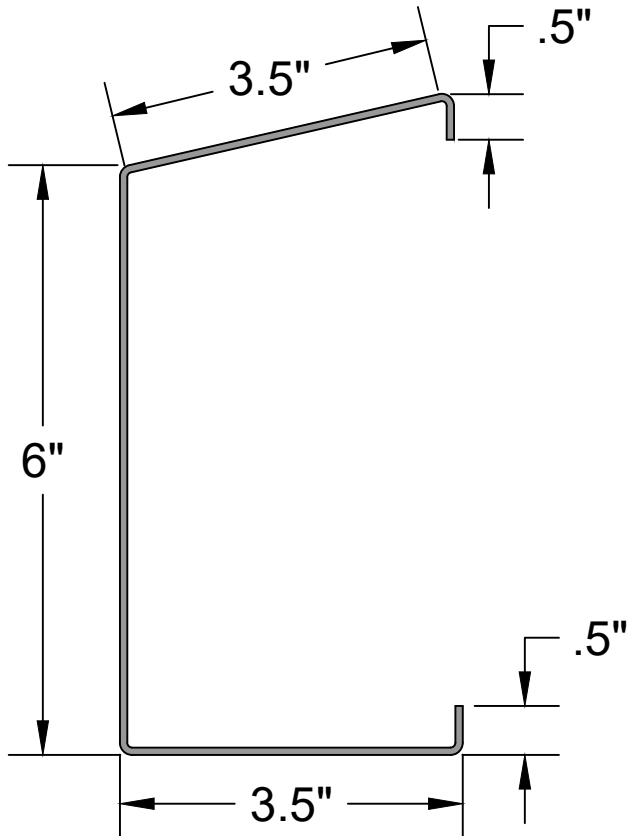
Depth in Inches	Member Key	Flange Height	Mill Thickness
1050 = 10.50"		162 = 1.625"	

Member Key

S = Stud (C Shaped)
L = Lintel (L Shaped)
T = Track (U Shaped)
W = I-Beam (I Shaped)
E = Eave Strut (C Shaped)
D = Double Eave Strut
A = Angle (2 Legs, 1 Angle)
F = Hat (Top Hat Shaped)
B = Box (Rectangle Shaped)
Fl = Strap/Flat (Flat Shaped)
Z = Zee (Z Shaped)

Mill - Gauge	Bend Radius
25 mill = 24 gauge	.0764
30 mill = 22 gauge	.0796
33 mill = 20 gauge	.0764
43 mill = 18 gauge	.0712
54 mill = 16 gauge	.0849
68 mill = 14 gauge	.1069
97 mill = 12 gauge	.1325

* Angle of Eave Strut needs to be specified.
Example has a $\frac{3}{12}$ pitch.



600E350

Steel Members Documentation

8" x 3.5" Eave Strut Single Slope



6195 Hwy 52 East
Murrayville GA, 30564
www.BMMetals.com
Office: (706) 864-6068
Fax: (706) 864-2147

Member specs and limits

Name: 800E350
Depth: 8"
Flange: 3.5"
Lip: .5"
Lengths: 6' - 60'
Gauges: 16, 14, 12

Name Breakdown

1050L162 - 43

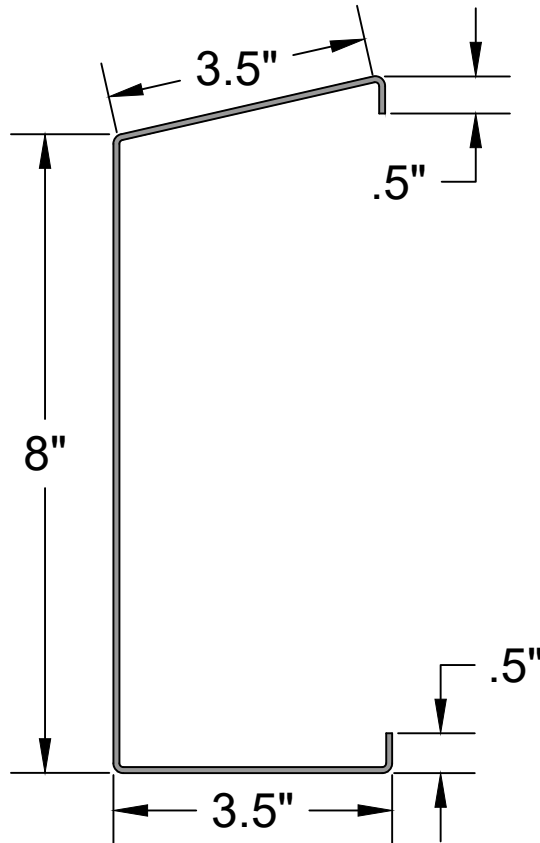
Depth in Inches 1050 = 10.50"	Member Key L	Flange Height 162 = 1.625"	Mill Thickness 43
----------------------------------	-----------------	-------------------------------	----------------------

Member Key

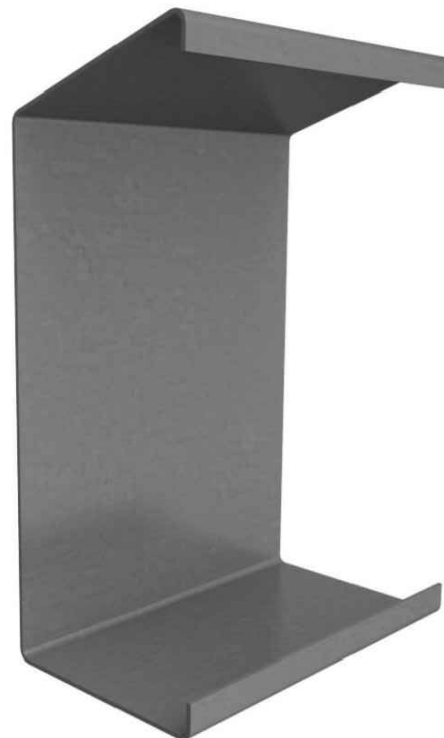
S = Stud (C Shaped)
L = Lintel (L Shaped)
T = Track (U Shaped)
W = I-Beam (I Shaped)
E = Eave Strut (C Shaped)
D = Double Eave Strut
A = Angle (2 Legs, 1 Angle)
F = Hat (Top Hat Shaped)
B = Box (Rectangle Shaped)
Fl = Strap/Flat (Flat Shaped)
Z = Zee (Z Shaped)

Mill - Gauge Bend Radius

25 mill = 24 gauge	.0764
30 mill = 22 gauge	.0796
33 mill = 20 gauge	.0764
43 mill = 18 gauge	.0712
54 mill = 16 gauge	.0849
68 mill = 14 gauge	.1069
97 mill = 12 gauge	.1325



*Angle of Eave Strut needs to be specified.
Example has a $\frac{3}{12}$ pitch.



800E350

Steel Members Documentation

10" x 3.5" Eave Strut Single Slope



6195 Hwy 52 East
 Murrayville GA, 30564
www.BMMetals.com
 Office: (706) 864-6068
 Fax: (706) 864-2147

Member specs and limits

Name:	1000E350
Depth:	10"
Flange:	3.5"
Lip:	.5"
Lengths:	6' - 60'
Gauges:	16, 14, 12

Name Breakdown

1050L162 - 43

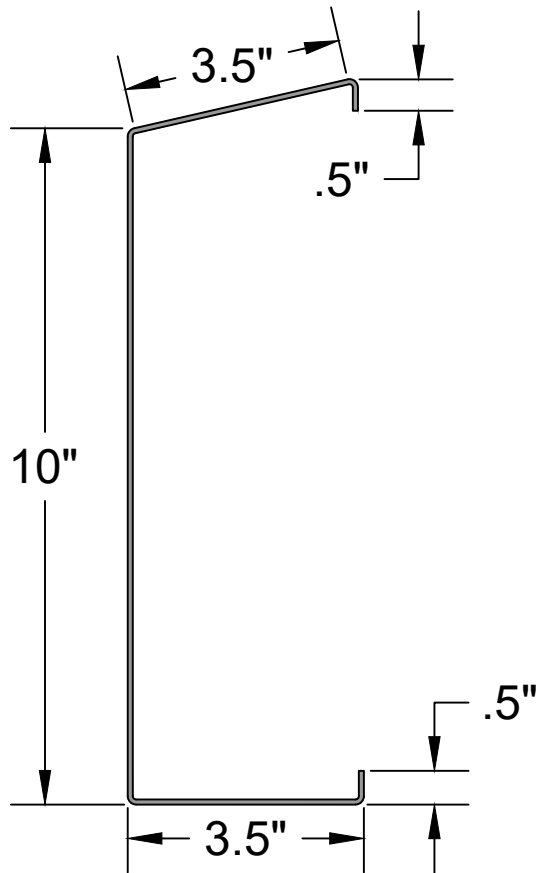
Depth in Inches 1050 = 10.50"	Member Key L	Flange Height 162 = 1.625"	Mill Thickness 43
----------------------------------	-----------------	-------------------------------	----------------------

Member Key

- S** = Stud (C Shaped)
- L** = Lintel (L Shaped)
- T** = Track (U Shaped)
- W** = I-Beam (I Shaped)
- E** = Eave Strut (C Shaped)
- D** = Double Eave Strut
- A** = Angle (2 Legs, 1 Angle)
- F** = Hat (Top Hat Shaped)
- B** = Box (Rectangle Shaped)
- Fl** = Strap/Flat (Flat Shaped)
- Z** = Zee (Z Shaped)

Mill - Gauge Bend Radius

25 mill = 24 gauge	.0764
30 mill = 22 gauge	.0796
33 mill = 20 gauge	.0764
43 mill = 18 gauge	.0712
54 mill = 16 gauge	.0849
68 mill = 14 gauge	.1069
97 mill = 12 gauge	.1325



*Angle of Eave Strut needs to be specified.
 Example has a $\frac{3}{12}$ pitch.



1000E350

Steel Members Documentation

12" x 3.5" Eave Strut Single Slope



6195 Hwy 52 East
Murrayville GA, 30564
www.BMMetals.com
Office: (706) 864-6068
Fax: (706) 864-2147

Member specs and limits

Name:	1200E350
Depth:	12"
Flange:	3.5"
Lip:	.5"
Lengths:	6' - 60'
Gauges:	16,14,12

Name Breakdown

1050L162 - 43

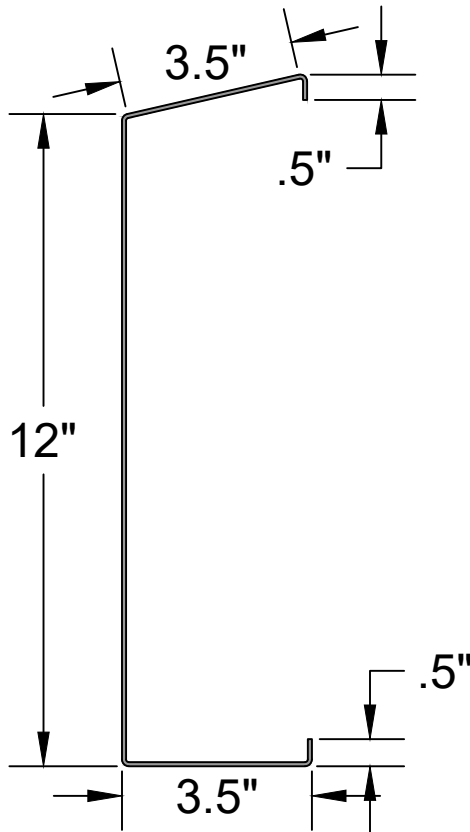
Depth in Inches 1050 = 10.50"	Member Key L	Flange Height 162 = 1.625"	Mill Thickness 43
----------------------------------	-----------------	-------------------------------	----------------------

Member Key

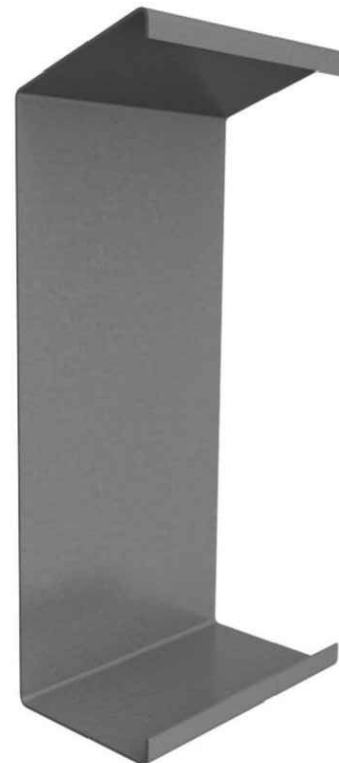
- S** = Stud (C Shaped)
- L** = Lintel (L Shaped)
- T** = Track (U Shaped)
- W** = I-Beam (I Shaped)
- E** = Eave Strut (C Shaped)
- D** = Double Eave Strut
- A** = Angle (2 Legs, 1 Angle)
- F** = Hat (Top Hat Shaped)
- B** = Box (Rectangle Shaped)
- FI** = Strap/Flat (Flat Shaped)
- Z** = Zee (Z Shaped)

Mill - Gauge Bend Radius

25 mill = 24 gauge	.0764
30 mill = 22 gauge	.0796
33 mill = 20 gauge	.0764
43 mill = 18 gauge	.0712
54 mill = 16 gauge	.0849
68 mill = 14 gauge	.1069
97 mill = 12 gauge	.1325



*Angle of Eave Strut needs to be specified.
Example has a $\frac{3}{12}$ pitch.



1200E350

Steel Members Documentation

6" x 3.5" Eave Strut Double Slope



6195 Hwy 52 East
Murrayville GA, 30564
www.BMMetals.com
Office: (706) 864-6068
Fax: (706) 864-2147

Member specs and limits

Name:	600DE350
Depth:	6"
Flange:	3.5"
Lip:	.5"
Lengths:	6' - 60'
Gauges:	16, 14, 12

Name Breakdown

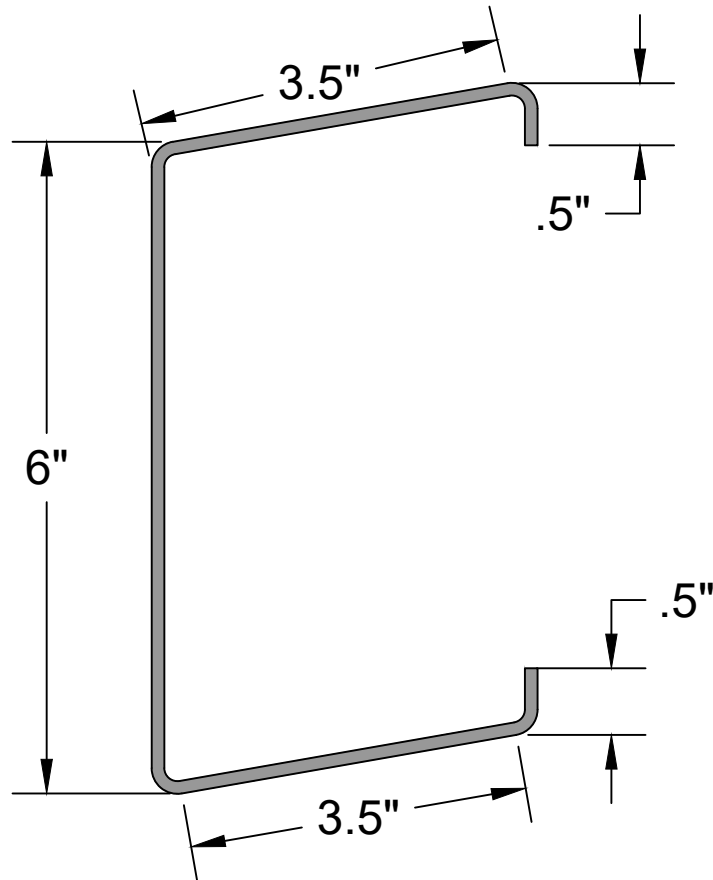
1050L162 - 43			
Depth in Inches 1050 = 10.50"	Member Key	Flange Height 162 = 1.625"	Mill Thickness

Member Key

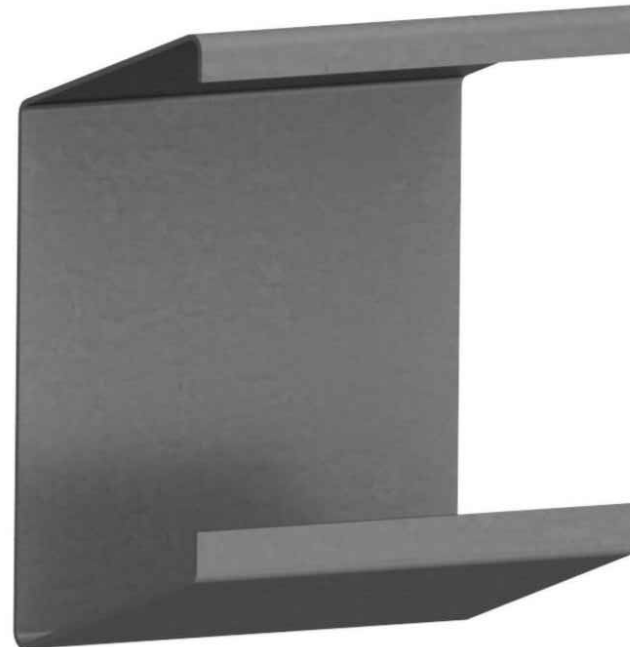
- S = Stud (C Shaped)
- L = Lintel (L Shaped)
- T = Track (U Shaped)
- W = I-Beam (I Shaped)
- E = Eave Strut (C Shaped)
- D = Double Eave Strut
- A = Angle (2 Legs, 1 Angle)
- F = Hat (Top Hat Shaped)
- B = Box (Rectangle Shaped)
- Fl = Strap/Flat (Flat Shaped)
- Z = Zee (Z Shaped)

Mill - Gauge Bend Radius

25 mill = 24 gauge	.0764
30 mill = 22 gauge	.0796
33 mill = 20 gauge	.0764
43 mill = 18 gauge	.0712
54 mill = 16 gauge	.0849
68 mill = 14 gauge	.1069
97 mill = 12 gauge	.1325



*Angle of Eave Strut needs to be specified.
Example has a $\frac{3}{12}$ pitch.



600E350

Steel Members Documentation

8" x 3.5" Eave Strut Double Slope



6195 Hwy 52 East
Murrayville GA, 30564
www.BMMetals.com
Office: (706) 864-6068
Fax: (706) 864-2147

Member specs and limits

Name:	800DE350
Depth:	8"
Flange:	3.5"
Lip:	.5"
Lengths:	6' - 60'
Gauges:	16, 14, 12

Name Breakdown

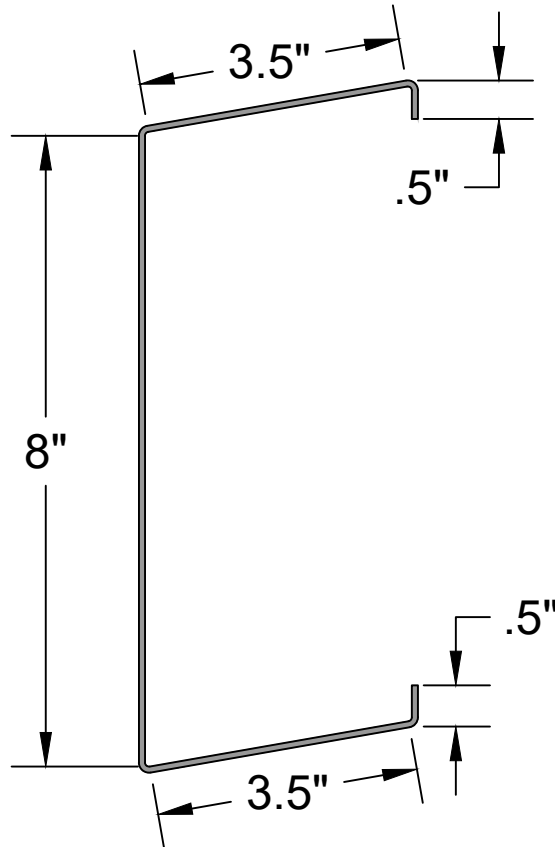
1050L162 - 43			
Depth in Inches 1050 = 10.50"	Member Key L	Flange Height 162 = 1.625"	Mill Thickness 43

Member Key

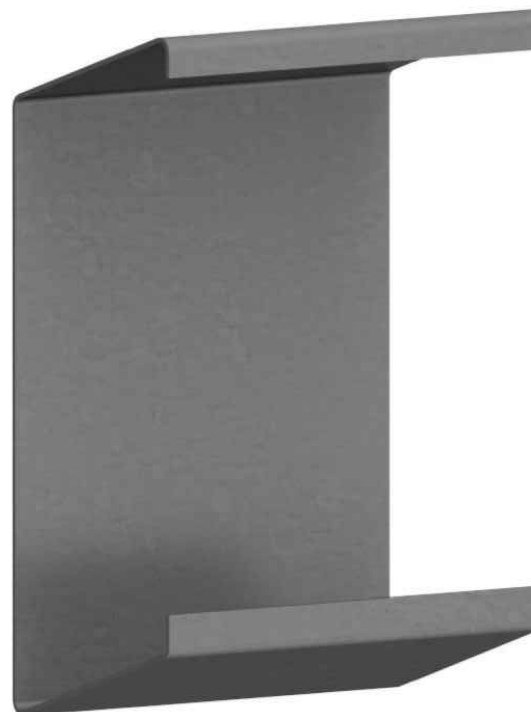
- S = Stud (C Shaped)
- L = Lintel (L Shaped)
- T = Track (U Shaped)
- W = I-Beam (I Shaped)
- E = Eave Strut (C Shaped)
- D = Double Eave Strut
- A = Angle (2 Legs, 1 Angle)
- F = Hat (Top Hat Shaped)
- B = Box (Rectangle Shaped)
- FI = Strap/Flat (Flat Shaped)
- Z = Zee (Z Shaped)

Mill - Gauge Bend Radius

25 mill = 24 gauge	.0764
30 mill = 22 gauge	.0796
33 mill = 20 gauge	.0764
43 mill = 18 gauge	.0712
54 mill = 16 gauge	.0849
68 mill = 14 gauge	.1069
97 mill = 12 gauge	.1325



*Angle of Eave Strut needs to be specified.
Example has a $\frac{3}{12}$ pitch.



800E350

Steel Members Documentation

10" x 3.5" Eave Strut Double Slope



6195 Hwy 52 East
Murrayville GA, 30564
www.BMMetals.com
Office: (706) 864-6068
Fax: (706) 864-2147

Member specs and limits

Name:	1000DE350
Depth:	10"
Flange:	3.5"
Lip:	.5"
Lengths:	6' - 60'
Gauges:	16, 14, 12

Name Breakdown

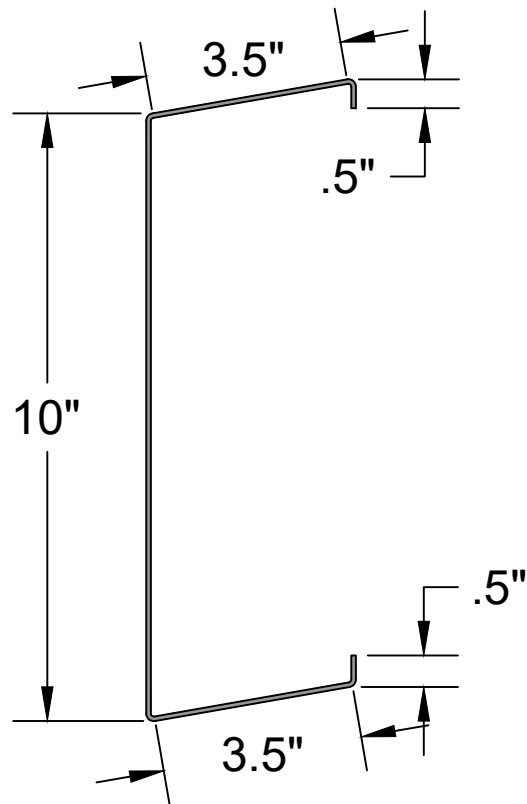
1050L162 - 43			
Depth in Inches 1050 = 10.50"	Member Key	Flange Height 162 = 1.625"	Mill Thickness

Member Key

- S = Stud (C Shaped)
- L = Lintel (L Shaped)
- T = Track (U Shaped)
- W = I-Beam (I Shaped)
- E = Eave Strut (C Shaped)
- D = Double Eave Strut
- A = Angle (2 Legs, 1 Angle)
- F = Hat (Top Hat Shaped)
- B = Box (Rectangle Shaped)
- FI = Strap/Flat (Flat Shaped)
- Z = Zee (Z Shaped)

Mill - Gauge	Bend Radius
--------------	-------------

25 mill = 24 gauge	.0764
30 mill = 22 gauge	.0796
33 mill = 20 gauge	.0764
43 mill = 18 gauge	.0712
54 mill = 16 gauge	.0849
68 mill = 14 gauge	.1069
97 mill = 12 gauge	.1325



*Angle of Eave Strut needs to be specified.
Example has a $\frac{3}{12}$ pitch.



1000E350

Steel Members Documentation

12" x 3.5" Eave Strut Double Slope



6195 Hwy 52 East
Murrayville GA, 30564
www.BMMetals.com
Office: (706) 864-6068
Fax: (706) 864-2147

Member specs and limits

Name:	1200DE350
Depth:	12"
Flange:	3.5"
Lip:	.5"
Lengths:	6' - 60'
Gauges:	16, 14, 12

Name Breakdown

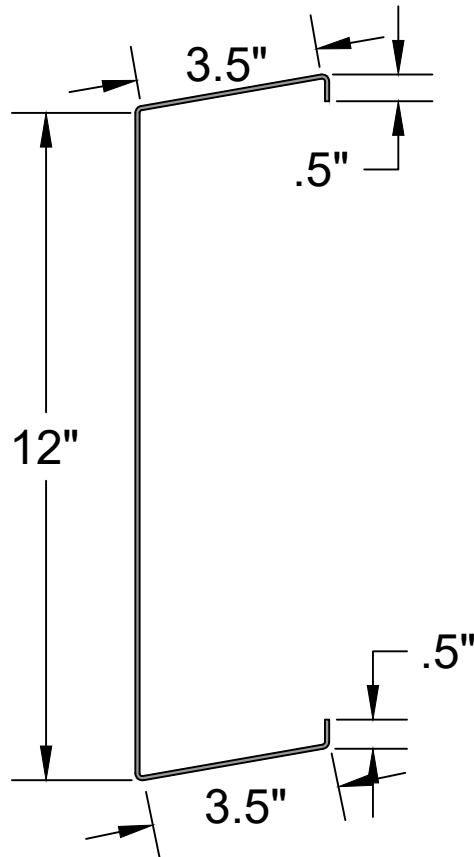
1050L162 - 43			
Depth in Inches 1050 = 10.50"	Member Key	Flange Height 162 = 1.625"	Mill Thickness

Member Key

- S** = Stud (C Shaped)
- L** = Lintel (L Shaped)
- T** = Track (U Shaped)
- W** = I-Beam (I Shaped)
- E** = Eave Strut (C Shaped)
- D** = Double Eave Strut
- A** = Angle (2 Legs, 1 Angle)
- F** = Hat (Top Hat Shaped)
- B** = Box (Rectangle Shaped)
- FI** = Strap/Flat (Flat Shaped)
- Z** = Zee (Z Shaped)

Mill - Gauge	Bend Radius
--------------	-------------

25 mill = 24 gauge	.0764
30 mill = 22 gauge	.0796
33 mill = 20 gauge	.0764
43 mill = 18 gauge	.0712
54 mill = 16 gauge	.0849
68 mill = 14 gauge	.1069
97 mill = 12 gauge	.1325



*Angle of Eave Strut needs to be specified.
Example has a $\frac{3}{12}$ pitch.



1200E350