



Steel Members Brochure

Galvanized

Information

Members

The members represented in this publication are typically produced in G60, grade 50 cold formed steel. G90 is available upon request but may require longer lead times.

Documentation

This document is subject to change without notice. Please contact B&M Metals to make sure that you have the latest edition of this document.

Service Holes

Service holes in studs can be punched upon request. In the event that spacing for the service holes is not specified, they will be punched on 3 foot centers. Please contact B&M Metals for custom hole spacing or more details.

Steel Members Disclaimer

Use with product tables, details, and preliminary estimating only

1. Scope / Intended Use

- Reference use only. This brochure is a general product reference for preliminary review, estimating, and coordination. It is not a sealed design package.
- Engineer verification required. All spans, reactions, member adequacy, deflection, stability, bracing, connections, anchorage, and foundation requirements shall be verified by a licensed Professional Engineer in the project jurisdiction.
- Project-specific conditions govern. Final member selection depends on actual loads, unbraced length, end conditions, diaphragm action, serviceability limits, and governing code requirements.

2. Design / Fabrication

- Codes and standards. Verify design using the governing code and applicable standards, including current editions of AISC 360, ASCE/SEI 7, and MBMA references where applicable.
- Material and availability. Dimensions, grades, coatings, lengths, hole patterns, finishes, tolerances, and availability may vary by mill, supplier, and production schedule. Specifications are subject to change without notice.
- Fabrication and field changes. Shop drawings, weld procedures, bolt selection, detailing, substitutions, and field modifications must be reviewed and approved by the Engineer of Record before use.

3. Liability / Revision Control

- No warranty of fitness for design. Listed members and properties are provided without guarantee that they satisfy a specific building, loading case, or code condition.
- Tolerance / liability limitation. Sweep, camber, twist, finish variation, and minor dimensional variation may occur within accepted manufacturing tolerances.
- Confirm latest revision. Verify the latest brochure revision and current project criteria before ordering, engineering, or installation. Contact B&M Metals for updated data or project-specific support.

Suggested Reference Standards

- AISC 360-22 - Structural steel design
- ASCE/SEI 7-22 - Design loads
- MBMA Metal Building Systems Manual - 2024
- Applicable ASTM material specs per project documents

Other Notes

- Member weights and section properties are nominal unless noted otherwise.
- Connection details shown elsewhere are conceptual unless sealed by the Engineer of Record.
- Do not scale drawings. Use written dimensions only.
- Contact B&M Metals for updated data, custom members, or project support.



C-Channel / Stud Brochure Galvanized

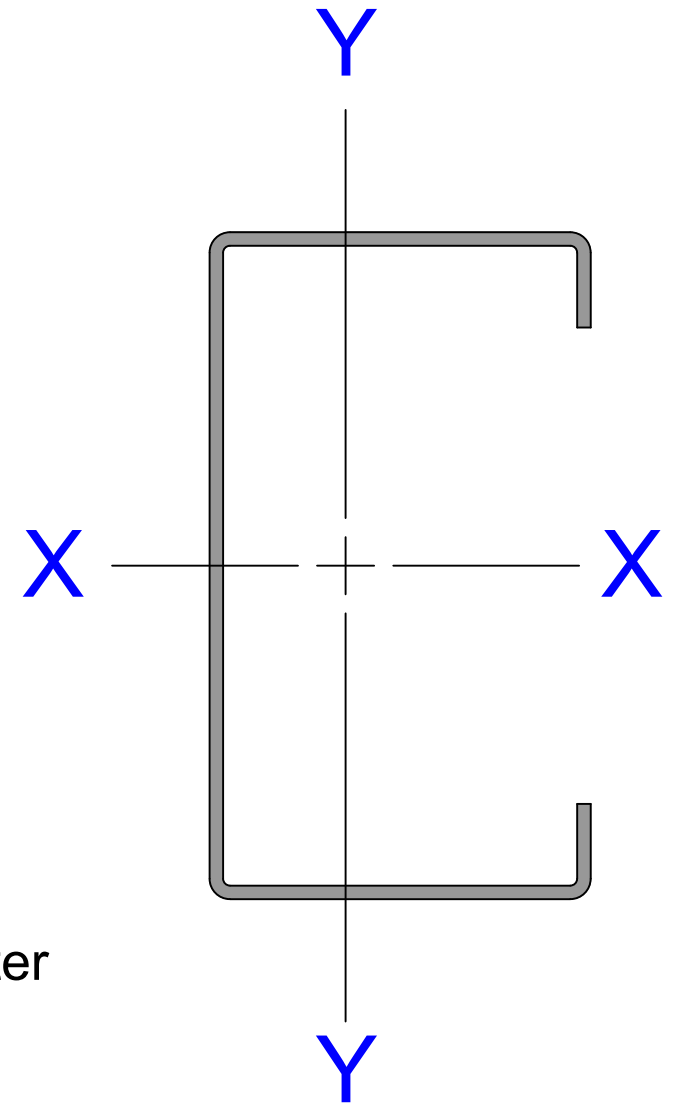
Quick Reference

Gross Properties

- I Moment of inertia of cross section about X,Y
- S Section modulus about X,Y
- r Radius of gyration of cross section about X,Y

Effective Properties

- J Torsional Constant
- C_w Warping Constant
- X_o Shear Center Location
- R_o Polar Radius of Gyration about the shear center
- β Monosymmetry Constant



Steel Members Documentation

Hole Punching



6195 Hwy 52 East
Murrayville GA, 30564
www.BMMetals.com
Office: (706) 864-6068
Fax: (706) 864-2147

Member specs and limits

Name:	DepthSFlange
Depth:	2.5" - 14"
Flange:	1.5" - 4"
Lip:	.5" - .75"
Lengths:	6' - 60'
Gauges:	24,22,20,18,16,14,12

Name Breakdown

1050L162 - 43

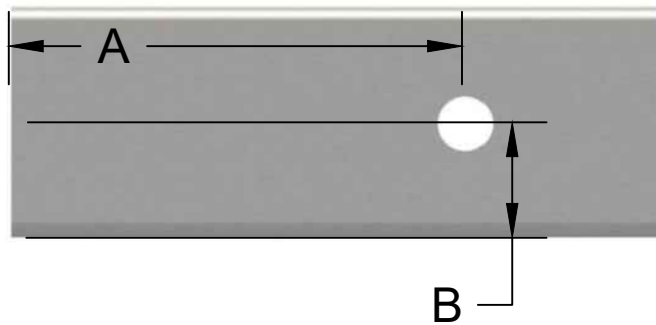
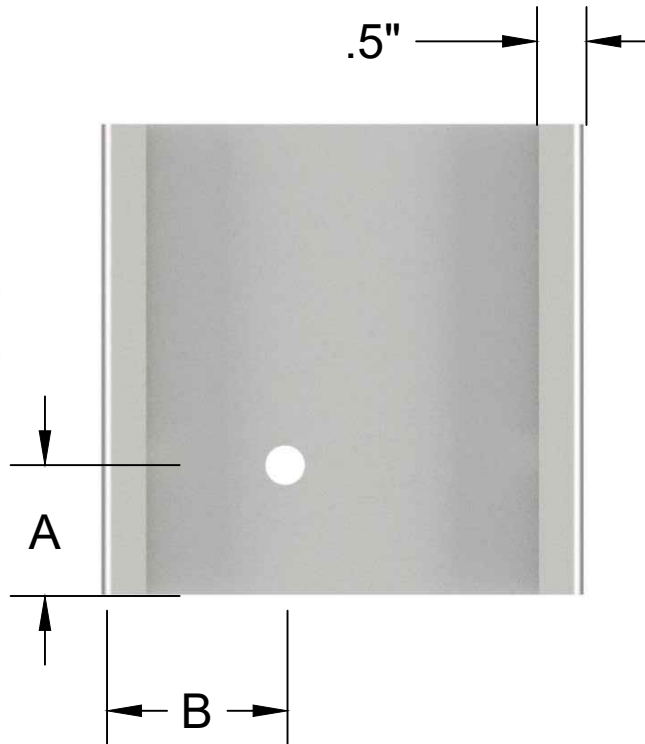
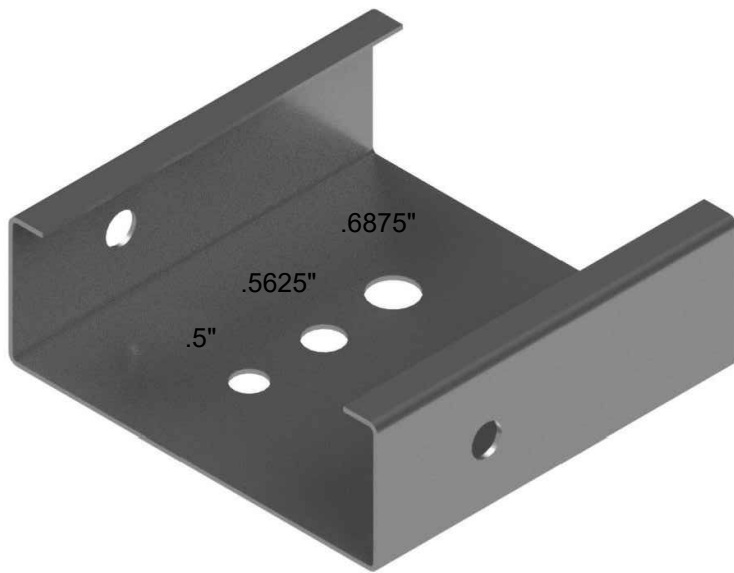
Depth in Inches: 1050 = 10.50"
Member Key: L
Flange Height: 162 = 1.625"
Mill Thickness: 43

Member Key

- S = Stud (C Shaped)
- L = Lintel (L Shaped)
- T = Track (U Shaped)
- W = I-Beam (I Shaped)
- E = Eave Strut (C Shaped)
- D = Double Eave Strut
- A = Angle (2 Legs, 1 Angle)
- F = Hat (Top Hat Shaped)
- B = Box (Rectangle Shaped)
- Fl = Strap/Flat (Flat Shaped)
- Z = Zee (Z Shaped)

Mill - Gauge | Bend Radius

25 mill = 24 gauge	.0764
30 mill = 22 gauge	.0796
33 mill = 20 gauge	.0764
43 mill = 18 gauge	.0712
54 mill = 16 gauge	.0849
68 mill = 14 gauge	.1069
97 mill = 12 gauge	.1325



* A - Specify Dimension
* B - Specify Dimension

Custom Studs and Track



6195 Hwy 52 East
Murrayville GA, 30564
www.BMMetals.com
Office: (706) 864-6068
Fax: (706) 864-2147

Member specs and limits

Name:	DepthSFlange
Depth:	2.5" - 14"
Flange:	1.5" - 4"
Lip:	.5" - .75"
Lengths:	6' - 60'
Gauges:	24,22,20,18,16,14,12

Name Breakdown

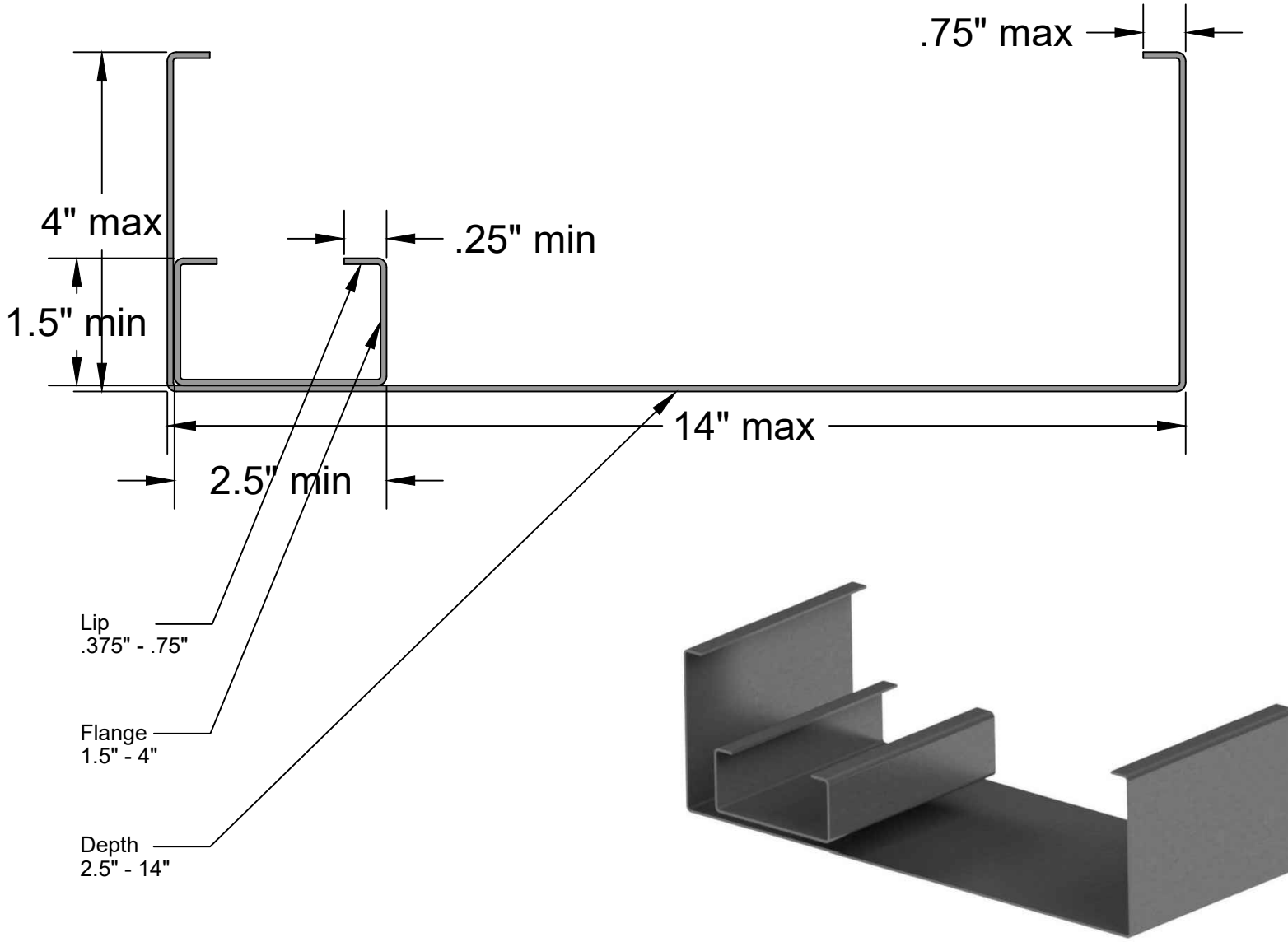
1050L162 - 43

Depth in Inches 1050 = 10.50"	Member Key L	Flange Height 162 = 1.625"	Mill Thickness 43
----------------------------------	-----------------	-------------------------------	----------------------

Member Key

- S** = Stud (C Shaped)
- L** = Lintel (L Shaped)
- T** = Track (U Shaped)
- W** = I-Beam (I Shaped)
- E** = Eave Strut (C Shaped)
- D** = Double Eave Strut
- A** = Angle (2 Legs, 1 Angle)
- F** = Hat (Top Hat Shaped)
- B** = Box (Rectangle Shaped)
- Fl** = Strap/Flat (Flat Shaped)
- Z** = Zee (Z Shaped)

Mill - Gauge	Bend Radius
25 mill = 24 gauge	.0764
30 mill = 22 gauge	.0796
33 mill = 20 gauge	.0764
43 mill = 18 gauge	.0712
54 mill = 16 gauge	.0849
68 mill = 14 gauge	.1069
97 mill = 12 gauge	.1325

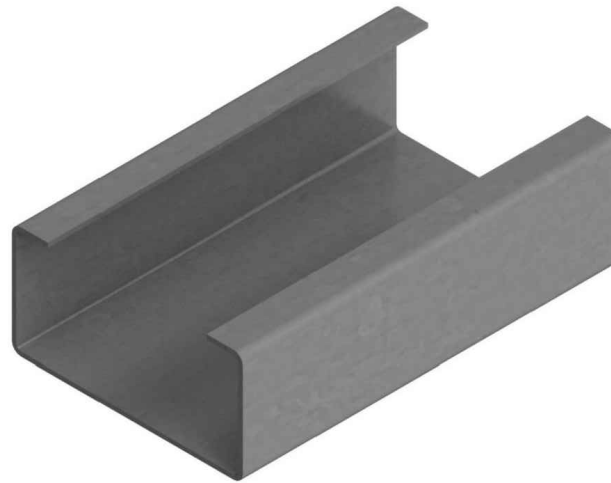
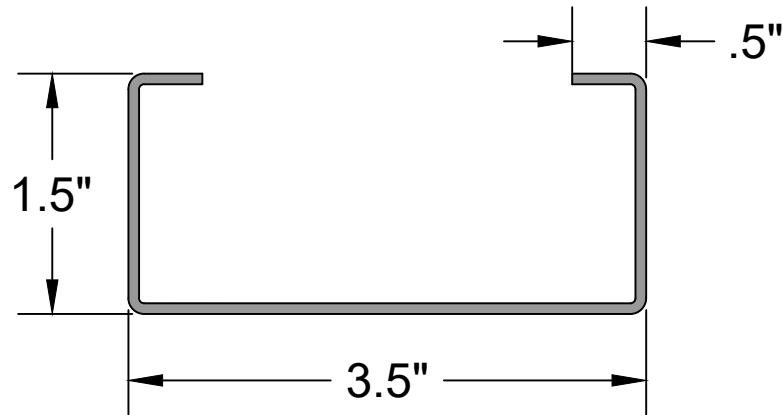


*Dimension changes in 1/16" increments

* All members shown in 14 gauge to show detail

Steel Members Documentation

3 1/2" x 1 1/2" Stud

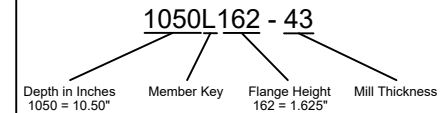


6195 Hwy 52 East
Murrayville GA, 30564
www.BMMetals.com
Office: (706) 864-6068
Fax: (706) 864-2147

Member specs and limits

Name:	350S150
Depth:	3.5"
Flange:	1.5"
Lip:	.5"
Lengths:	6' - 60'
Gauges:	24,22,20,18,16,14,12

Name Breakdown



Member Key

- S** = Stud (C Shaped)
- L** = Lintel (L Shaped)
- T** = Track (U Shaped)
- W** = I-Beam (I Shaped)
- E** = Eave Strut (C Shaped)
- D** = Double Eave Strut
- A** = Angle (2 Legs, 1 Angle)
- F** = Hat (Top Hat Shaped)
- B** = Box (Rectangle Shaped)
- Fl** = Strap/Flat (Flat Shaped)
- Z** = Zee (Z Shaped)

Mill - Gauge Bend Radius

25 mill = 24 gauge	.0764
30 mill = 22 gauge	.0796
33 mill = 20 gauge	.0764
43 mill = 18 gauge	.0712
54 mill = 16 gauge	.0849
68 mill = 14 gauge	.1069
97 mill = 12 gauge	.1325

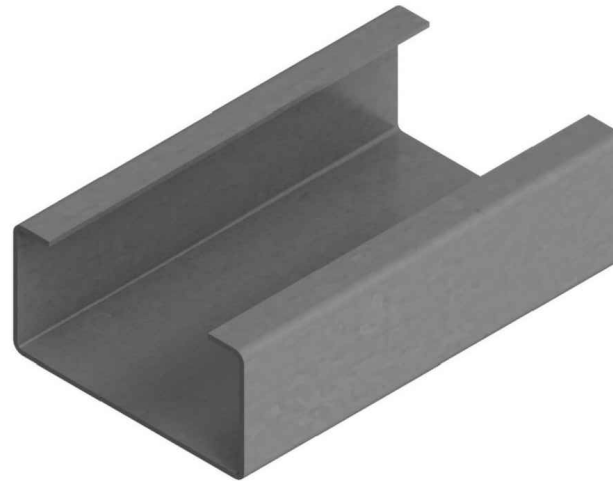
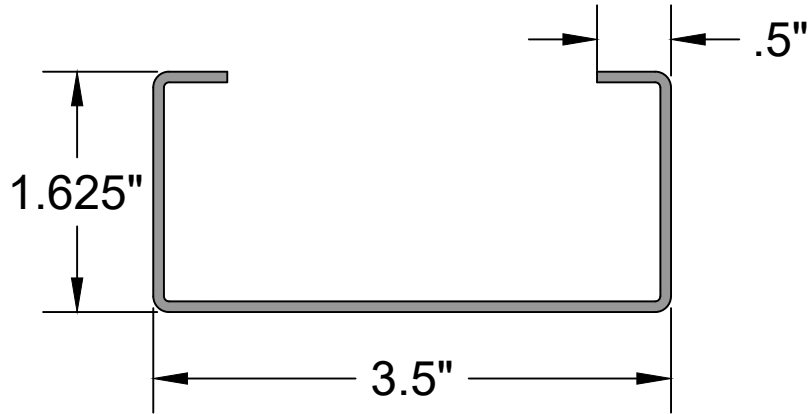
Member Name	Gross Properties (x)					Gross Properties (y)						Torsional Properties				
	G	ksi	Area	Weight	Width	Ix	Sx	rx	Iy	Sy	ry	J	Cw	Xo	Ro	β
350S150-25	24	50	0.147	0.502	6.41	0.204	0.116	1.176	0.019	0.017	0.362	0.00003	0.069	0.733	1.432	0.738
350S150-30	22	50	0.191	0.651	6.38	0.263	0.150	1.172	0.025	0.021	0.359	0.00006	0.088	0.728	1.425	0.739
350S150-33	20	50	0.241	0.821	6.35	0.329	0.188	1.167	0.030	0.026	0.354	0.00012	0.110	0.722	1.417	0.741
350S150-43	18	50	0.303	1.030	6.31	0.408	0.233	1.161	0.037	0.031	0.349	0.00023	0.135	0.714	1.407	0.742
350S150-54	16	50	0.358	1.217	6.27	0.478	0.273	1.156	0.042	0.036	0.344	0.00039	0.157	0.707	1.398	0.744
350S150-68	14	50	0.447	1.522	6.21	0.588	0.336	1.147	0.050	0.042	0.336	0.00077	0.191	0.696	1.383	0.747
350S150-97	12	50	0.604	2.057	6.10	0.772	0.441	1.130	0.062	0.051	0.320	0.00197	0.245	0.676	1.356	0.751

350S150

*All calculations based on unpunched stud
** Full Sectional properties available upon request

Steel Members Documentation

3 1/2" x 1 5/8" Stud

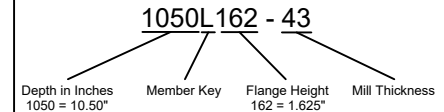


6195 Hwy 52 East
Murrayville GA, 30564
www.BMMetals.com
Office: (706) 864-6068
Fax: (706) 864-2147

Member specs and limits

Name:	350S162
Depth:	3.5"
Flange:	1.625"
Lip:	.5"
Lengths:	6' - 60'
Gauges:	24,22,20,18,16,14,12

Name Breakdown



Member Key

- S** = Stud (C Shaped)
- L** = Lintel (L Shaped)
- T** = Track (U Shaped)
- W** = I-Beam (I Shaped)
- E** = Eave Strut (C Shaped)
- D** = Double Eave Strut
- A** = Angle (2 Legs, 1 Angle)
- F** = Hat (Top Hat Shaped)
- B** = Box (Rectangle Shaped)
- Fl** = Strap/Flat (Flat Shaped)
- Z** = Zee (Z Shaped)

* All members shown in 14 gauge to show detail

Member	Gauge	Fy (ksi)	Area (in ²)	Weight (lbs/ft)	Gross Properties					Effective Properties			Coil
					I _x (in ⁴)	S _x (in ³)	R _x (in)	I _y (in ⁴)	R _y (in)	I _x (in ⁴)	M _d (ft-lb)	M _{da} (ft-lb)	Flat Width
362S162-25	24	50	.14126	.6367	.3710	.21203	1.4113	.0721	.9364	.35057	417.68	367.54	7.5139"
362S162-30	22	50	.26109	.7628	.4188	.23936	1.4071	.0812	.6189	.41889	548.34	472.48	7.4758"
362S162-33	20	50	.25780	.8826	.5084	.29051	1.4043	.0982	.6171	.50840	638.56	573.59	7.4507"
362S162-43	18	50	.33413	1.137	.6546	.37405	1.3997	.1254	.6126	.65459	841.36	816.45	7.4086"
362S162-54	16	50	.41484	1.412	.8047	.45982	1.3927	.1525	.6063	.80468	1215.7	1167.3	7.3923"
362S162-68	14	50	.51479	1.752	.9851	.56293	1.3834	.1840	.5978	.98513	1574.6	1571.3	7.2201"
362S162-97	12	50	.71130	2.421	1.322	.75558	1.3634	.2392	.5799	1.3223	2230.3	2230.3	6.9941"
											Nominal	7.45"	

*All calculations based on unpunched stud

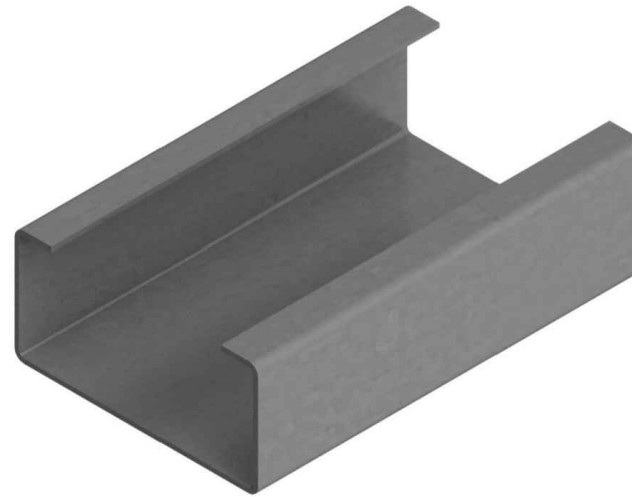
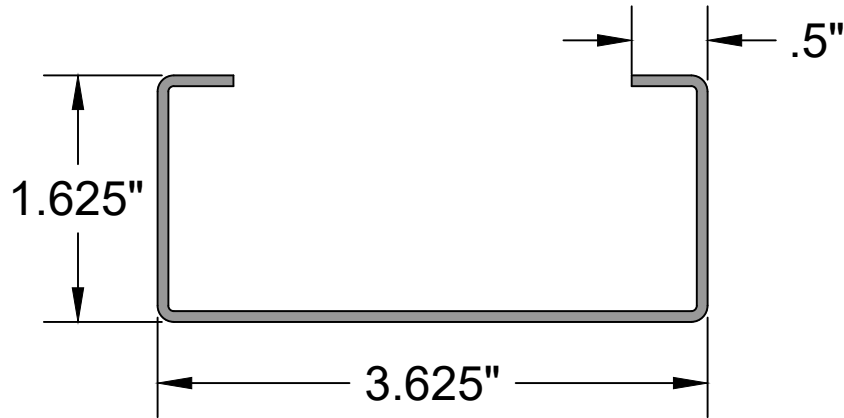
** Full Sectional properties available upon request

350S162

Mill - Gauge	Bend Radius
25 mill = 24 gauge	.0764
30 mill = 22 gauge	.0796
33 mill = 20 gauge	.0764
43 mill = 18 gauge	.0712
54 mill = 16 gauge	.0849
68 mill = 14 gauge	.1069
97 mill = 12 gauge	.1325

Steel Members Documentation

3 5/8" x 1 5/8" Stud

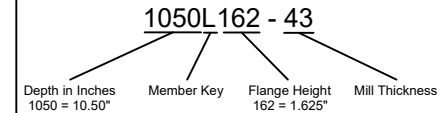


6195 Hwy 52 East
Murrayville GA, 30564
www.BMMetals.com
Office: (706) 864-6068
Fax: (706) 864-2147

Member specs and limits

Name:	362S162
Depth:	3.625"
Flange:	1.625"
Lip:	.5"
Lengths:	6' - 60'
Gauges:	24,22,20,18,16,14,12

Name Breakdown



Member Key

- S = Stud (C Shaped)
- L = Lintel (L Shaped)
- T = Track (U Shaped)
- W = I-Beam (I Shaped)
- E = Eave Strut (C Shaped)
- D = Double Eave Strut
- A = Angle (2 Legs, 1 Angle)
- F = Hat (Top Hat Shaped)
- B = Box (Rectangle Shaped)
- Fl = Strap/Flat (Flat Shaped)
- Z = Zee (Z Shaped)

* All members shown in 14 gauge to show detail

Member	Gauge	Fy (ksi)	Area (in ²)	Weight (lbs/ft)	Gross Properties					Effective Properties			Coil
					I _x (in ⁴)	S _x (in ³)	R _x (in)	I _y (in ⁴)	R _y (in)	I _x (in ⁴)	M _d (ft-lb)	M _{da} (ft-lb)	Flat Width
362S162-25	24	50	.1902	.6473	.1902	.2219	1.4541	.0730	.6195	.3807	432.60	381.67	7.6389"
362S162-30	22	50	.2278	.7751	.4803	.2650	1.4521	.0868	.6175	.4668	574.84	490.91	7.6008"
362S162-33	20	50	.2873	.9774	.6026	.3325	1.4484	.1083	.6139	.6026	735.73	676.10	7.5757"
362S162-43	18	50	.3609	1.228	.7525	.4152	1.4439	.1341	.6095	.7525	959.36	921.54	7.5336"
362S162-54	16	50	.4248	1.445	.8784	.4846	1.4380	.1551	.6042	.8784	1175.7	1142.9	7.4543"
362S162-68	14	50	.5286	1.799	1.078	.5948	1.4282	.1873	.5953	1.078	1484.1	1484.1	7.3451"
362S162-97	12	50	.7095	2.414	1.413	.7799	1.4115	.2387	.5800	1.413	1945.8	1945.8	7.1191"
											Nominal		7.45"

*All calculations based on unpunched stud

** Full Sectional properties available upon request

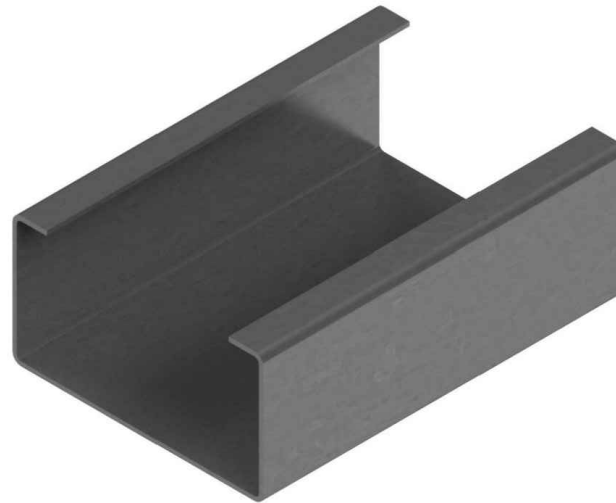
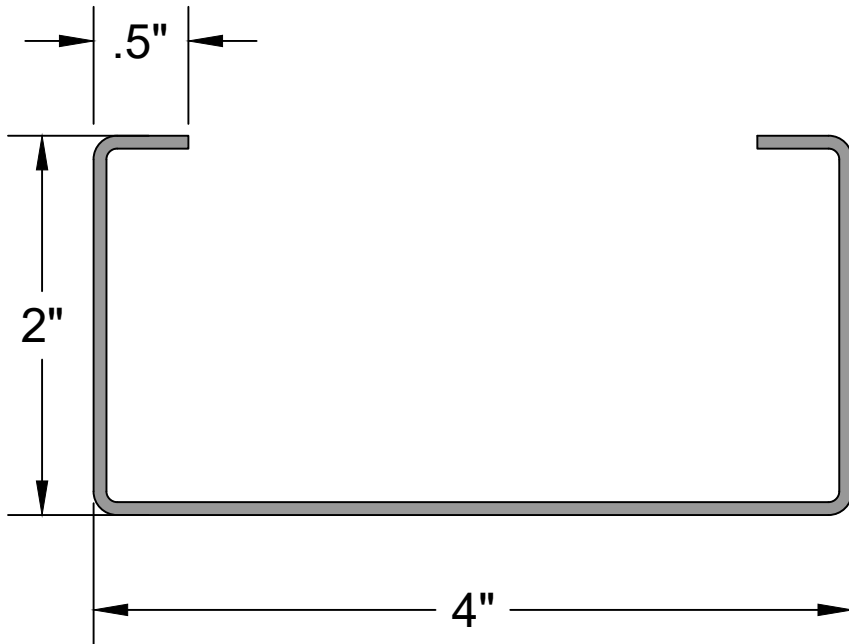
362S162

Mill - Gauge

Mill - Gauge	Bend Radius
25 mill = 24 gauge	.0764
30 mill = 22 gauge	.0796
33 mill = 20 gauge	.0764
43 mill = 18 gauge	.0712
54 mill = 16 gauge	.0849
68 mill = 14 gauge	.1069
97 mill = 12 gauge	.1325

Steel Members Documentation

4" x 2" Stud



6195 Hwy 52 East
Murrayville GA, 30564
www.BMMetals.com
Office: (706) 864-6068
Fax: (706) 864-2147

Member specs and limits

Name: 400S200
Depth: 4"
Flange: 2"
Lip: .5"
Lengths: 6' - 60'
Gauges: 24,22,20,18,16,14,12

Name Breakdown

1050L162 - 43

Depth in Inches: 1050 = 10.50"
Member Key: L
Flange Height: 162 = 1.625"
Mill Thickness: 43

Member Key

S = Stud (C Shaped)
L = Lintel (L Shaped)
T = Track (U Shaped)
W = I-Beam (I Shaped)
E = Eave Strut (C Shaped)
D = Double Eave Strut
A = Angle (2 Legs, 1 Angle)
F = Hat (Top Hat Shaped)
B = Box (Rectangle Shaped)
Fl = Strap/Flat (Flat Shaped)
Z = Zee (Z Shaped)

* All members shown in 14 gauge to show detail

Member Name	G	ksi	Area	Weight	Width	Gross Properties (x)			Gross Properties (y)			Torsional Properties				
						lx	Sx	rx	ly	Sy	ry	J	Cw	Xo	Ro	β
400S200-54	16	50	0.500	1.702	8.77	1.026	0.513	1.432	0.212	0.156	0.651	0.00054	0.476	1.211	1.985	0.628
400S200-68	14	50	0.627	2.135	8.71	1.276	0.638	1.426	0.262	0.192	0.646	0.00108	0.584	1.199	1.972	0.630
400S200-97	12	50	0.852	2.899	8.60	1.705	0.853	1.415	0.347	0.253	0.639	0.00278	0.761	1.177	1.948	0.635

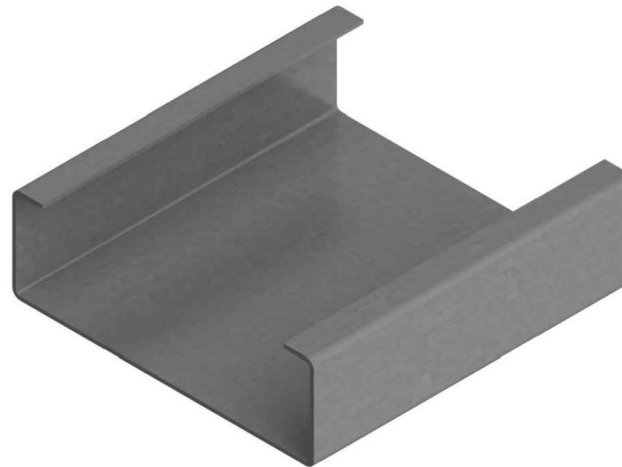
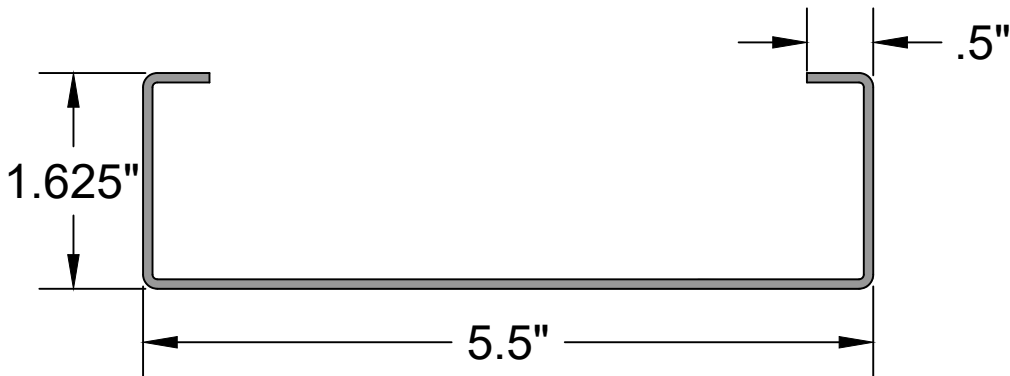
Mill - Gauge	Bend Radius
25 mill = 24 gauge	.0764
30 mill = 22 gauge	.0796
33 mill = 20 gauge	.0764
43 mill = 18 gauge	.0712
54 mill = 16 gauge	.0849
68 mill = 14 gauge	.1069
97 mill = 12 gauge	.1325

*All calculations should be verified by licensed Engineer
** Full Sectional properties available upon request

400S200

Steel Members Documentation

5 1/2" x 1 5/8" Stud

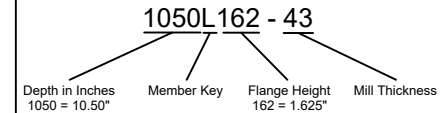


6195 Hwy 52 East
Murrayville GA, 30564
www.BMMetals.com
Office: (706) 864-6068
Fax: (706) 864-2147

Member specs and limits

Name:	550S162
Depth:	5.5"
Flange:	1.625"
Lip:	.5"
Lengths:	6' - 60'
Gauges:	24,22,20,18,16,14,12

Name Breakdown



Member Key

- S** = Stud (C Shaped)
- L** = Lintel (L Shaped)
- T** = Track (U Shaped)
- W** = I-Beam (I Shaped)
- E** = Eave Strut (C Shaped)
- D** = Double Eave Strut
- A** = Angle (2 Legs, 1 Angle)
- F** = Hat (Top Hat Shaped)
- B** = Box (Rectangle Shaped)
- FI** = Strap/Flat (Flat Shaped)
- Z** = Zee (Z Shaped)

* All members shown in 14 gauge to show detail

Member	Gauge	F _y (ksi)	Area (in ²)	Weight (lbs/ft)	Gross Properties					Effective Properties			Coil
					I _x (in ⁴)	S _x (in ³)	R _x (in)	I _y (in ⁴)	R _y (in)	I _x (in ⁴)	M _d (ft-lb)	M _{da} (ft-lb)	Flat Width
550S162-25	24	50	.2371	.8068	1.0620	.3862	2.1164	.0833	.5928	1.0182	656.29	591.74	9.5139"
550S162-30	22	50	.2840	.9665	1.2695	.4616	2.1142	.0991	.5908	1.2502	898.96	766.36	9.4758"
550S162-33	20	50	.3585	1.2199	1.5961	.5804	2.1100	.1236	.5871	1.5961	1235.6	1067.0	9.4507"
550S162-43	18	50	.4509	1.534	1.9980	.7265	2.1049	.1531	.5826	1.9980	1689.5	1473.2	9.4086"
550S162-54	16	50	.5317	1.809	2.3397	.8508	2.0978	.1771	.5772	2.3397	2065.1	1849.6	9.3293"
550S162-68	14	50	.6636	2.2581	2.8871	1.049	2.0858	.2141	.5680	2.8871	2619.4	2496.4	9.2201"
550S162-97	12	50	.8951	3.046	3.8204	1.389	2.0659	.2731	.5523	3.8204	3466.2	3466.2	8.9941"
											Nominal	9.5"	

*All calculations based on unpunched stud

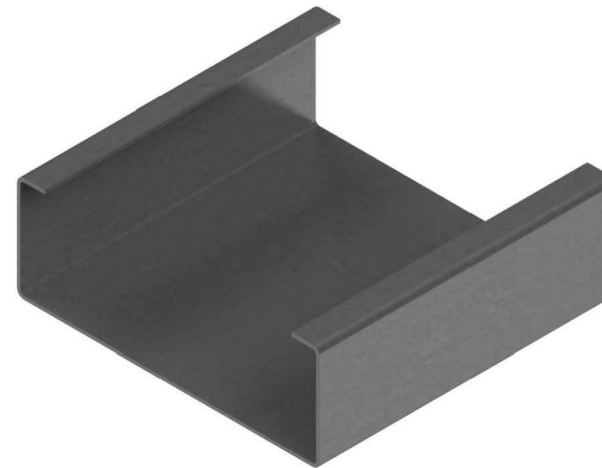
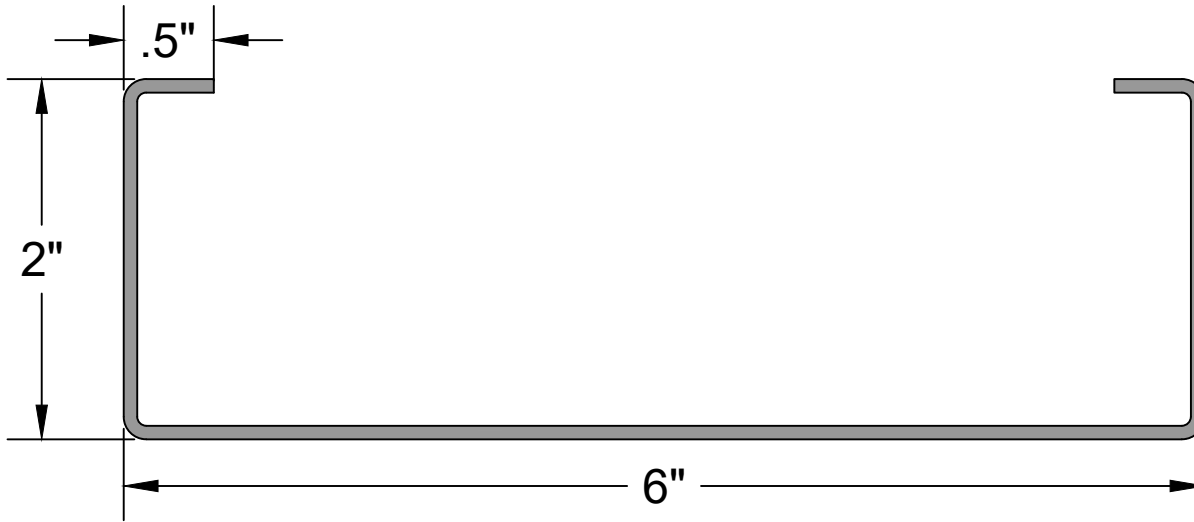
** Full Sectional properties available upon request

550S162

Mill - Gauge	Bend Radius
25 mill = 24 gauge	.0764
30 mill = 22 gauge	.0796
33 mill = 20 gauge	.0764
43 mill = 18 gauge	.0712
54 mill = 16 gauge	.0849
68 mill = 14 gauge	.1069
97 mill = 12 gauge	.1325

Steel Members Documentation

6" x 2" Stud



6195 Hwy 52 East
Murrayville GA, 30564
www.BMMetals.com
Office: (706) 864-6068
Fax: (706) 864-2147

Member specs and limits

Name:	600S200
Depth:	6"
Flange:	2"
Lip:	.5"
Lengths:	6' - 60'
Gauges:	24,22,20,18,16,14,12

Name Breakdown

1050L162 - 43			
Depth in Inches 1050 = 10.50"	Member Key	Flange Height 162 = 1.625"	Mill Thickness 43

Member Key

- S** = Stud (C Shaped)
- L** = Lintel (L Shaped)
- T** = Track (U Shaped)
- W** = I-Beam (I Shaped)
- E** = Eave Strut (C Shaped)
- D** = Double Eave Strut
- A** = Angle (2 Legs, 1 Angle)
- F** = Hat (Top Hat Shaped)
- B** = Box (Rectangle Shaped)
- Fl** = Strap/Flat (Flat Shaped)
- Z** = Zee (Z Shaped)

* All members shown in 14 gauge to show detail

Member Name	Gross Properties (x)					Gross Properties (y)						Torsional Properties				
	G	ksi	Area	Weight	Width	I _x	S _x	r _x	I _y	S _y	r _y	J	C _w	X _o	R _o	β
600S200-54	16	50	1.050	3.573	10.60	3.951	1.317	1.940	0.410	0.275	0.625	0.00343	1.996	1.162	2.346	0.755
600S200-68	14	50	0.771	2.625	10.71	2.944	0.981	1.954	0.309	0.209	0.633	0.00133	1.524	1.183	2.370	0.751
600S200-97	12	50	1.050	3.573	10.60	3.951	1.317	1.940	0.410	0.275	0.625	0.00343	1.996	1.162	2.346	0.755

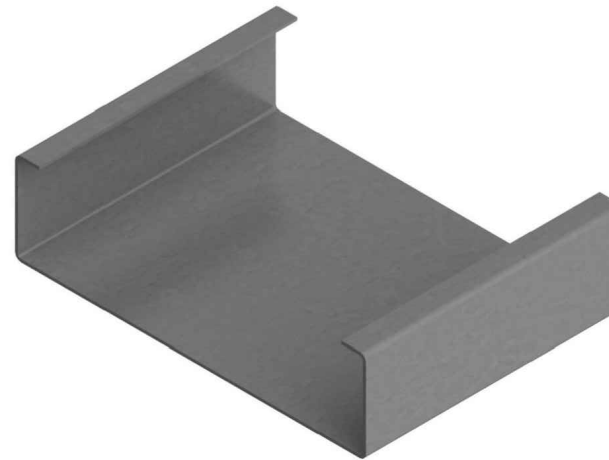
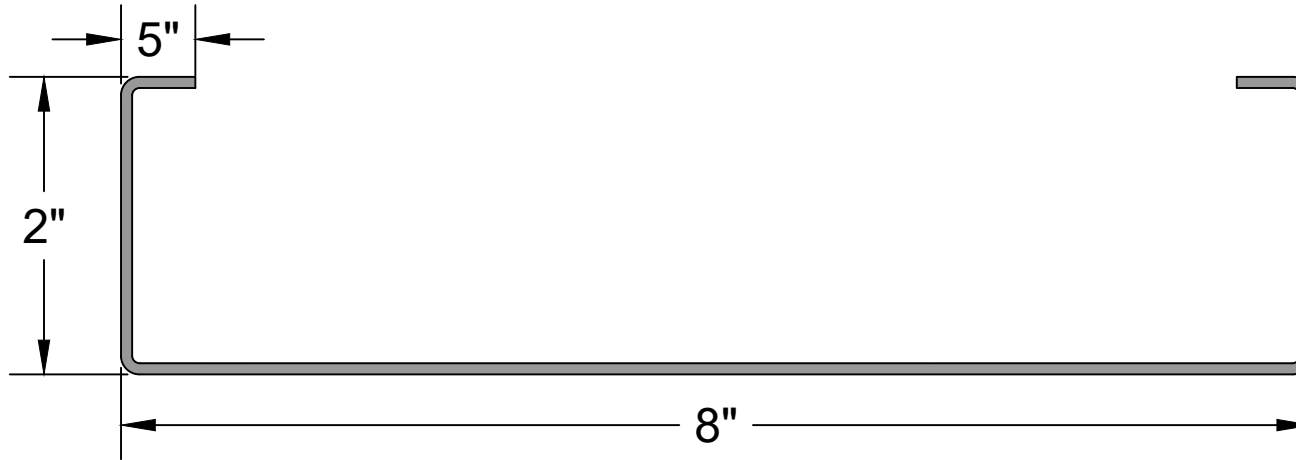
Mill - Gauge	Bend Radius
25 mill = 24 gauge	.0764
30 mill = 22 gauge	.0796
33 mill = 20 gauge	.0764
43 mill = 18 gauge	.0712
54 mill = 16 gauge	.0849
68 mill = 14 gauge	.1069
97 mill = 12 gauge	.1325

600S200

*All calculations should be verified by licensed Engineer
** Full Sectional properties available upon request

Steel Members Documentation

8" x 2" Stud



6195 Hwy 52 East
Murrayville GA, 30564
www.BMMetals.com
Office: (706) 864-6068
Fax: (706) 864-2147

Member specs and limits

Name: 800S200
Depth: 8"
Flange: 2"
Lip: .5"
Lengths: 6' - 60'
Gauges: 24,22,20,18,16,14,12

Name Breakdown

1050L162 - 43

Depth in Inches: 1050 = 10.50"
Member Key: L
Flange Height: 162 = 1.625"
Mill Thickness: 43

Member Key

S = Stud (C Shaped)
L = Lintel (L Shaped)
T = Track (U Shaped)
W = I-Beam (I Shaped)
E = Eave Strut (C Shaped)
D = Double Eave Strut
A = Angle (2 Legs, 1 Angle)
F = Hat (Top Hat Shaped)
B = Box (Rectangle Shaped)
Fl = Strap/Flat (Flat Shaped)
Z = Zee (Z Shaped)

Mill - Gauge Bend Radius

25 mill = 24 gauge .0764
30 mill = 22 gauge .0796
33 mill = 20 gauge .0764
43 mill = 18 gauge .0712
54 mill = 16 gauge .0849
68 mill = 14 gauge .1069
97 mill = 12 gauge .1325

* All members shown in 14 gauge to show detail

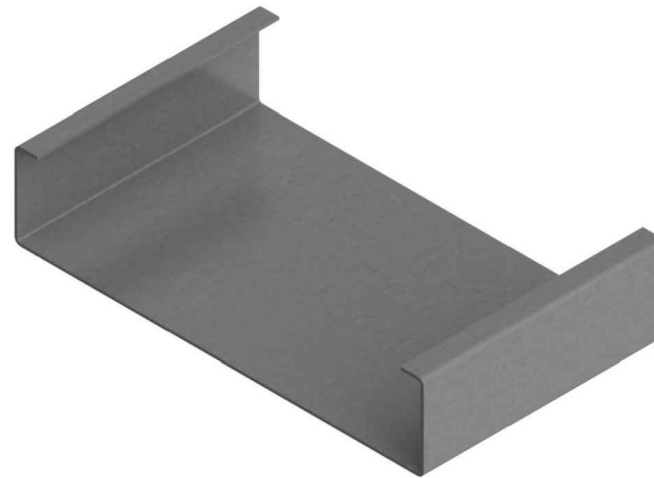
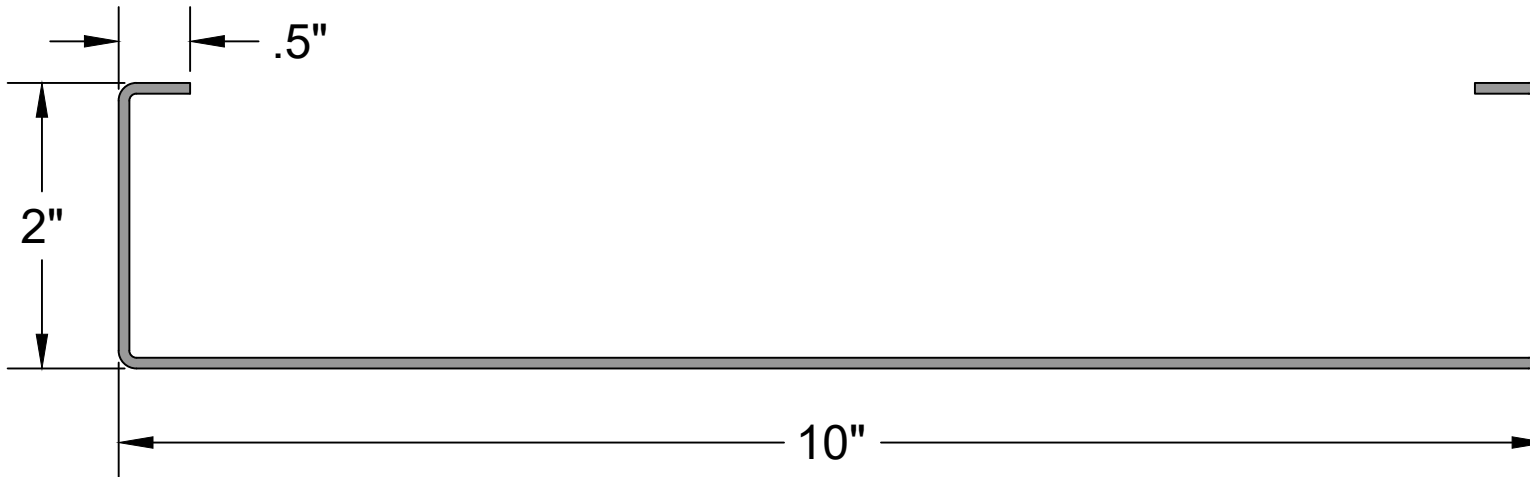
Member Name	G	ksi	Area	Weight	Width	Gross Properties (x)			Gross Properties (y)			Torsional Properties				
						lx	Sx	rx	ly	Sy	ry	J	Cw	Xo	Ro	β
800S200-54	16	50	0.728	2.478	12.77	4.250	1.062	2.416	0.276	0.177	0.616	0.00079	2.435	1.186	2.761	0.815
800S200-68	14	50	0.915	3.115	12.71	5.302	1.326	2.407	0.342	0.219	0.611	0.00158	3.000	1.175	2.747	0.817
800S200-97	12	50	1.248	4.246	12.60	7.129	1.782	2.390	0.453	0.288	0.602	0.00408	3.941	1.154	2.722	0.820

800S200

*All calculations should be verified by licensed Engineer
** Full Sectional properties available upon request

Steel Members Documentation

10" x 2" Stud



6195 Hwy 52 East
Murrayville GA, 30564
www.BMMetals.com
Office: (706) 864-6068
Fax: (706) 864-2147

Member specs and limits

Name:	1000S200
Depth:	10"
Flange:	2"
Lip:	.5"
Lengths:	6' - 60'
Gauges:	24,22,20,18,16,14,12

Name Breakdown

1050L162 - 43			
Depth in Inches 1050 = 10.50"	Member Key	Flange Height 162 = 1.625"	Mill Thickness

Member Key

- S** = Stud (C Shaped)
- L** = Lintel (L Shaped)
- T** = Track (U Shaped)
- W** = I-Beam (I Shaped)
- E** = Eave Strut (C Shaped)
- D** = Double Eave Strut
- A** = Angle (2 Legs, 1 Angle)
- F** = Hat (Top Hat Shaped)
- B** = Box (Rectangle Shaped)
- Fl** = Strap/Flat (Flat Shaped)
- Z** = Zee (Z Shaped)

Mill - Gauge Bend Radius

25 mill = 24 gauge	.0764
30 mill = 22 gauge	.0796
33 mill = 20 gauge	.0764
43 mill = 18 gauge	.0712
54 mill = 16 gauge	.0849
68 mill = 14 gauge	.1069
97 mill = 12 gauge	.1325

* All members shown in 14 gauge to show detail

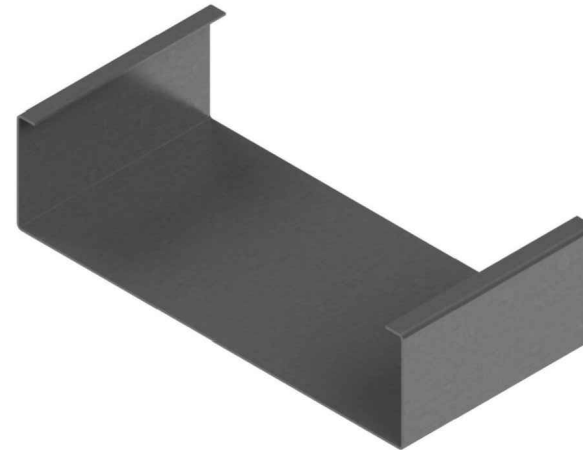
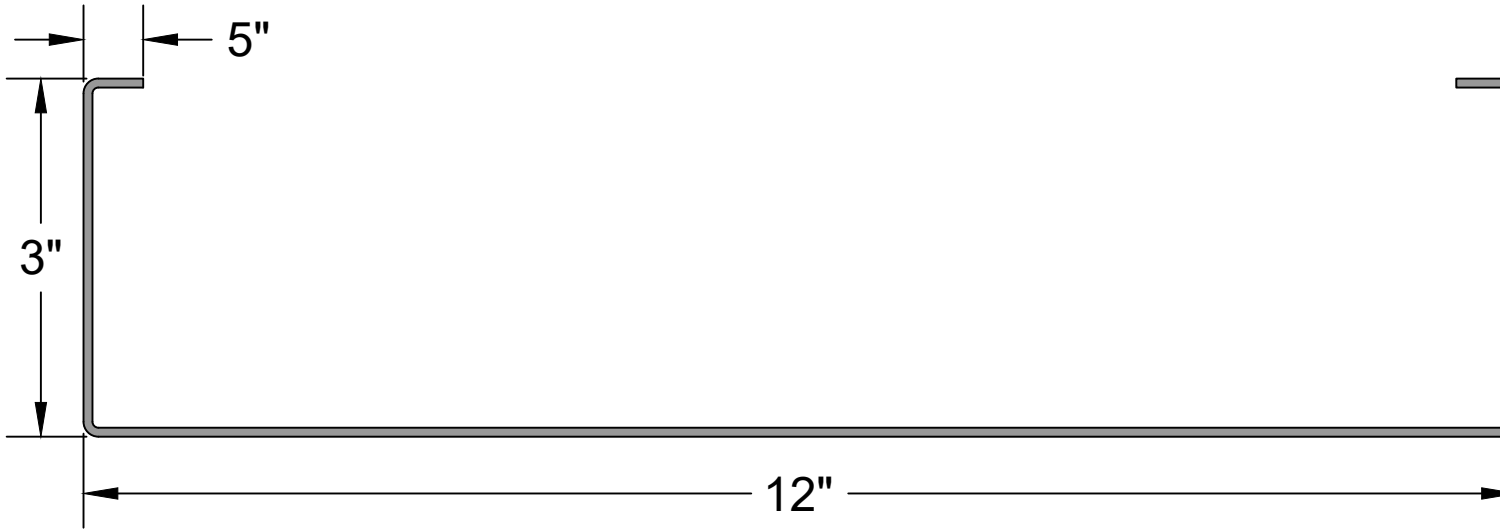
Member Name	G	ksi	Area	Weight	Width	Gross Properties (x)			Gross Properties (y)			Torsional Properties				
						lx	Sx	rx	ly	Sy	ry	J	Cw	Xo	Ro	β
1000S200-54	16	50	0.842	2.866	14.77	6.687	1.337	2.818	0.295	0.183	0.592	0.00091	4.101	1.181	3.113	0.856
1000S200-68	14	50	1.059	3.605	14.71	8.349	1.670	2.807	0.366	0.225	0.587	0.00183	5.055	1.170	3.098	0.857
1000S200-97	12	50	1.446	4.920	14.60	11.24	2.247	2.788	0.484	0.296	0.578	0.00472	6.651	1.150	3.071	0.860

1000S200

*All calculations should be verified by licensed Engineer
** Full Sectional properties available upon request

Steel Members Documentation

12" x 3" Stud

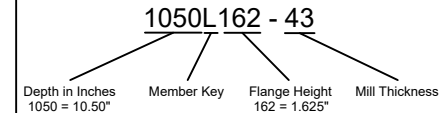


6195 Hwy 52 East
Murrayville GA, 30564
www.BMMetals.com
Office: (706) 864-6068
Fax: (706) 864-2147

Member specs and limits

Name:	1200S300
Depth:	12"
Flange:	3"
Lip:	.5"
Lengths:	6' - 60'
Gauges:	24,22,20,18,16,14,12

Name Breakdown



Member Key

- S** = Stud (C Shaped)
- L** = Lintel (L Shaped)
- T** = Track (U Shaped)
- W** = I-Beam (I Shaped)
- E** = Eave Strut (C Shaped)
- D** = Double Eave Strut
- A** = Angle (2 Legs, 1 Angle)
- F** = Hat (Top Hat Shaped)
- B** = Box (Rectangle Shaped)
- Fl** = Strap/Flat (Flat Shaped)
- Z** = Zee (Z Shaped)

* All members shown in 14 gauge to show detail

Member Name	Gross Properties (x)					Gross Properties (y)			Torsional Properties							
	G	ksi	Area	Weight	Width	I _x	S _x	r _x	I _y	S _y	r _y	J	C _w	X _o	R _o	β
1200S300-54	16	50	1.070	3.641	18.77	13.74	2.290	3.584	0.802	0.336	0.866	0.0012	19.09	1.692	4.056	0.826
1200S300-68	14	50	1.347	4.585	18.71	17.21	2.868	3.574	0.997	0.416	0.860	0.0023	23.71	1.680	4.042	0.827
1200S300-97	12	50	1.842	6.268	18.60	23.29	3.881	3.556	1.332	0.554	0.851	0.0060	31.64	1.660	4.015	0.829

Mill - Gauge Bend Radius

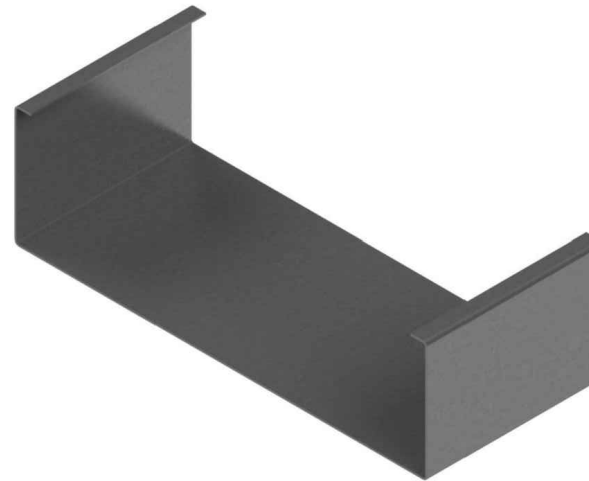
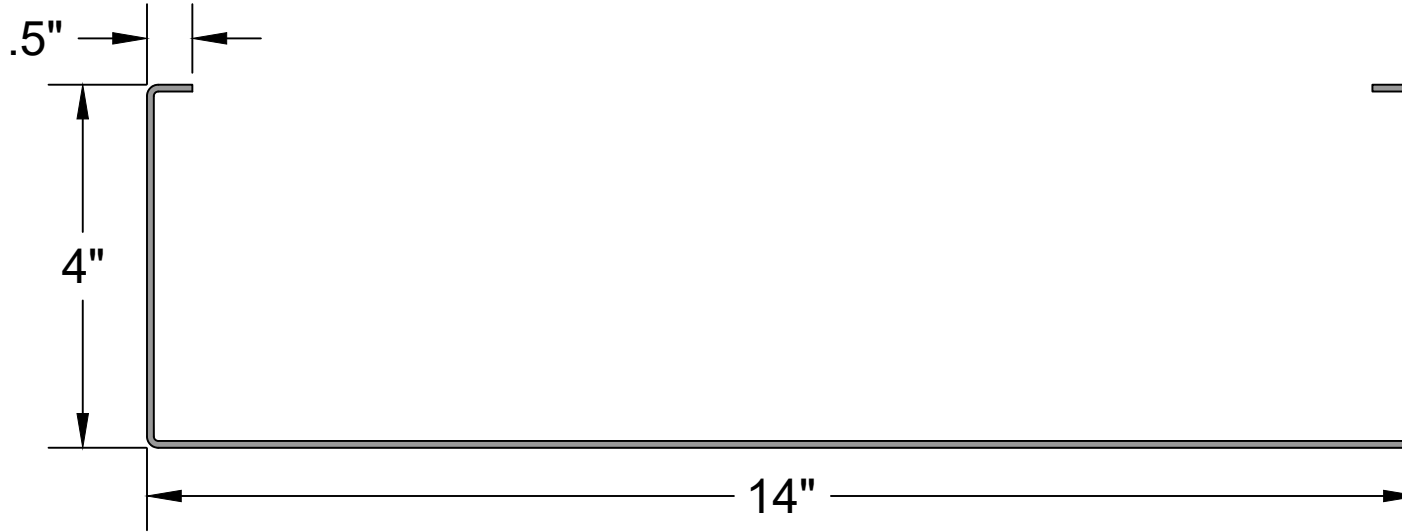
25 mill = 24 gauge	.0764
30 mill = 22 gauge	.0796
33 mill = 20 gauge	.0764
43 mill = 18 gauge	.0712
54 mill = 16 gauge	.0849
68 mill = 14 gauge	.1069
97 mill = 12 gauge	.1325

1200S300

*All calculations should be verified by licensed Engineer
** Full Sectional properties available upon request

Steel Members Documentation

14" x 4" Stud



6195 Hwy 52 East
Murrayville GA, 30564
www.BMMetals.com
Office: (706) 864-6068
Fax: (706) 864-2147

Member specs and limits

Name:	1400S400
Depth:	14"
Flange:	4"
Lip:	.5"
Lengths:	6' - 60'
Gauges:	24,22,20,18,16,14,12

Name Breakdown

1050L162 - 43			
Depth in Inches 1050 = 10.50"	Member Key	Flange Height 162 = 1.625"	Mill Thickness

Member Key

- S** = Stud (C Shaped)
- L** = Lintel (L Shaped)
- T** = Track (U Shaped)
- W** = I-Beam (I Shaped)
- E** = Eave Strut (C Shaped)
- D** = Double Eave Strut
- A** = Angle (2 Legs, 1 Angle)
- F** = Hat (Top Hat Shaped)
- B** = Box (Rectangle Shaped)
- Fl** = Strap/Flat (Flat Shaped)
- Z** = Zee (Z Shaped)

* All members shown in 14 gauge to show detail

Member Name	G	ksi	Area	Weight	Width	Gross Properties (x)			Gross Properties (y)			Torsional Properties				
						lx	Sx	rx	ly	Sy	ry	J	Cw	Xo	Ro	β
1400S400-54	16	50	1.298	4.417	22.77	24.30	3.471	4.326	1.663	0.528	1.132	0.0014	59.79	2.197	4.982	0.806
1400S400-68	14	50	1.635	5.565	22.71	30.48	4.354	4.317	2.074	0.657	1.126	0.0028	74.57	2.185	4.968	0.806
1400S400-97	12	50	2.238	7.616	22.60	41.38	5.911	4.300	2.786	0.879	1.116	0.0073	100.2	2.165	4.942	0.808

Mill - Gauge Bend Radius

25 mill = 24 gauge	.0764
30 mill = 22 gauge	.0796
33 mill = 20 gauge	.0764
43 mill = 18 gauge	.0712
54 mill = 16 gauge	.0849
68 mill = 14 gauge	.1069
97 mill = 12 gauge	.1325

1400S400

*All calculations should be verified by licensed Engineer
** Full Sectional properties available upon request



Track Brochure

Galvanized

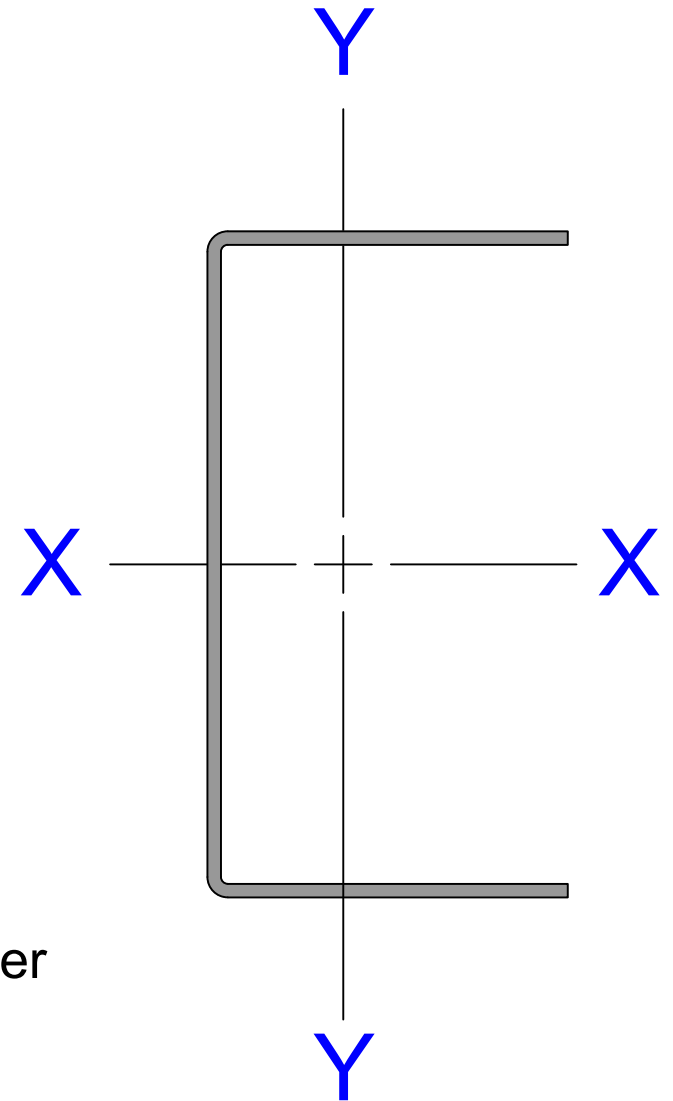
Quick Reference

Gross Properties

- I Moment of inertia of cross section about X,Y
- S Section modulus about X,Y
- r Radius of gyration of cross section about X,Y

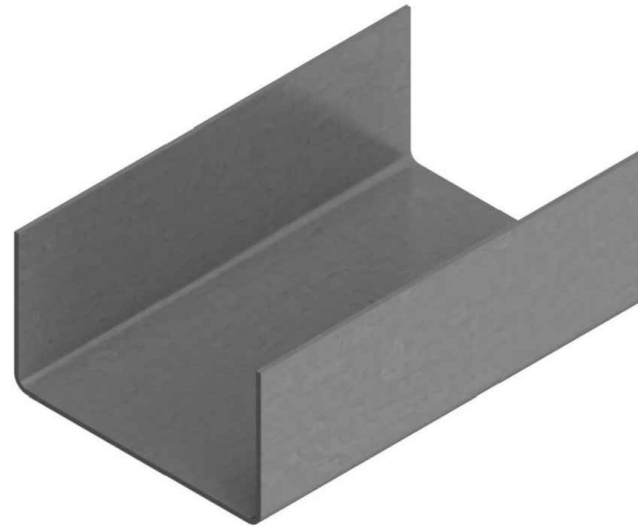
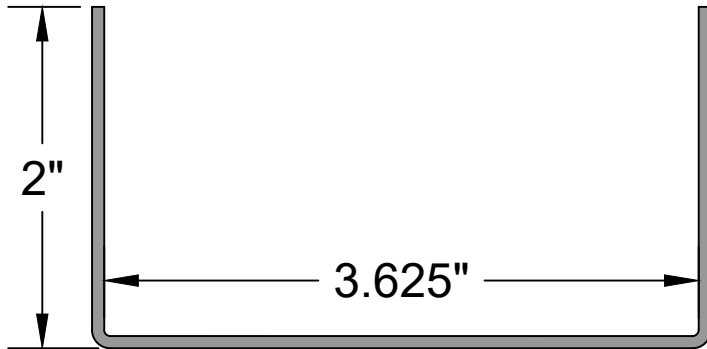
Effective Properties

- J Torsional Constant
- C_w Warping Constant
- X_o Shear Center Location
- R_o Polar Radius of Gyration about the shear center
- β Monosymmetry Constant



Steel Members Documentation

3 5/8" Track

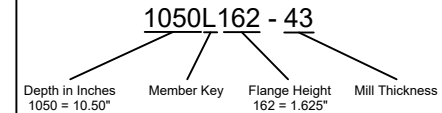


6195 Hwy 52 East
Murrayville GA, 30564
www.BMMetals.com
Office: (706) 864-6068
Fax: (706) 864-2147

Member specs and limits

Name:	362T200
Depth:	3.625"
Flange:	2"
Lip:	.0"
Lengths:	6' - 60'
Gauges:	24,22,20,18,16,14,12

Name Breakdown



Member Key

- S** = Stud (C Shaped)
- L** = Lintel (L Shaped)
- T** = Track (U Shaped)
- W** = I-Beam (I Shaped)
- E** = Eave Strut (C Shaped)
- D** = Double Eave Strut
- A** = Angle (2 Legs, 1 Angle)
- F** = Hat (Top Hat Shaped)
- B** = Box (Rectangle Shaped)
- Fl** = Strap/Flat (Flat Shaped)
- Z** = Zee (Z Shaped)

* All members shown in 14 gauge to show detail

Member	Gauge	Fy (ksi)	Area (in ²)	Weight (lbs/ft)	Gross Properties					Effective Properties			Coil
					I _x (in ⁴)	S _x (in ³)	R _x (in)	I _y (in ⁴)	R _y (in)	I _x (in ⁴)	M _d (ft-lb)	M _{da} (ft-lb)	Flat Width
362S200-25	24	50	.1874	.6540	.4126	.2276	1.4840	.0787	.6484	.1244	NA	NA	7.45"
362S200-30	22	50	.2119	.8775	.4675	.2569	1.4825	.0889	.6479	.3223	NA	NA	7.45"
362S200-33	20	50	.2859	.9852	.6808	.3605	1.5334	.1201	.6440	.4962	.49620	NA	7.45"
362S200-43	18	50	.3655	1.243	.8608	.4540	1.5347	.1507	.6422	.6661	684.09	NA	7.45"
362S200-54	16	50	.4339	1.476	1.031	.5393	1.5415	.1779	.6404	1.031	870.05	NA	7.45"
362S200-68	14	50	.5479	1.864	1.320	.6814	1.5525	.2226	.6374	1.152	1214.0	NA	7.45"
362S200-97	12	50	.7525	2.560	1.849	.9353	1.5678	.3006	.6321	1.758	1913.4	NA	7.45"
											Nominal		7.45"

*All calculations based on unpunched stud

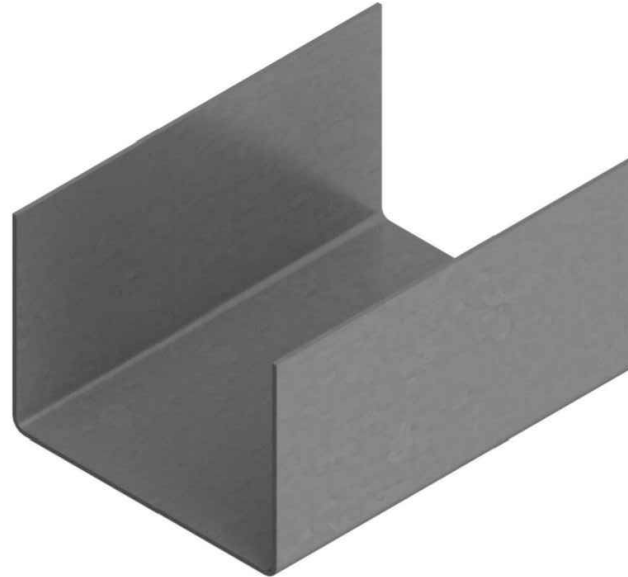
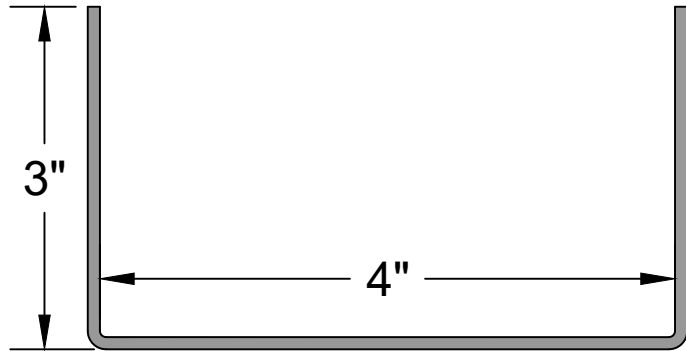
** Full Sectional properties available upon request

362T200

Mill - Gauge	Bend Radius
25 mill = 24 gauge	.0764
30 mill = 22 gauge	.0796
33 mill = 20 gauge	.0764
43 mill = 18 gauge	.0712
54 mill = 16 gauge	.0849
68 mill = 14 gauge	.1069
97 mill = 12 gauge	.1325

Steel Members Documentation

4" Track



6195 Hwy 52 East
Murrayville GA, 30564
www.BMMetals.com
Office: (706) 864-6068
Fax: (706) 864-2147

Member specs and limits

Name:	400T300`
Depth:	4"
Flange:	3"
Lip:	0"
Lengths:	6' - 60'
Gauges:	24,22,20,18,16,14,12

Name Breakdown

1050L162 - 43			
Depth in Inches 1050 = 10.50"	Member Key	Flange Height 162 = 1.625"	Mill Thickness

Member Key

- S** = Stud (C Shaped)
- L** = Lintel (L Shaped)
- T** = Track (U Shaped)
- W** = I-Beam (I Shaped)
- E** = Eave Strut (C Shaped)
- D** = Double Eave Strut
- A** = Angle (2 Legs, 1 Angle)
- F** = Hat (Top Hat Shaped)
- B** = Box (Rectangle Shaped)
- Fl** = Strap/Flat (Flat Shaped)
- Z** = Zee (Z Shaped)

* All members shown in 14 gauge to show detail

Member Name	G	ksi	Area	Weight	Width	Gross Properties (x)			Gross Properties (y)			Torsional Properties				
						I _x	S _x	r _x	I _y	S _y	r _y	J	C _w	X _o	R _o	β
400T200-54	16	50	0.443	1.508	7.77	0.848	0.424	1.383	0.098	0.064	0.470	0.00048	0.476	0.957	1.747	0.700
400T200-68	14	50	0.555	1.890	7.71	1.050	0.525	1.375	0.119	0.077	0.462	0.00096	0.584	0.946	1.732	0.702
400T200-97	12	50	0.753	2.562	7.60	1.393	0.696	1.360	0.150	0.097	0.447	0.00246	0.761	0.926	1.705	0.705

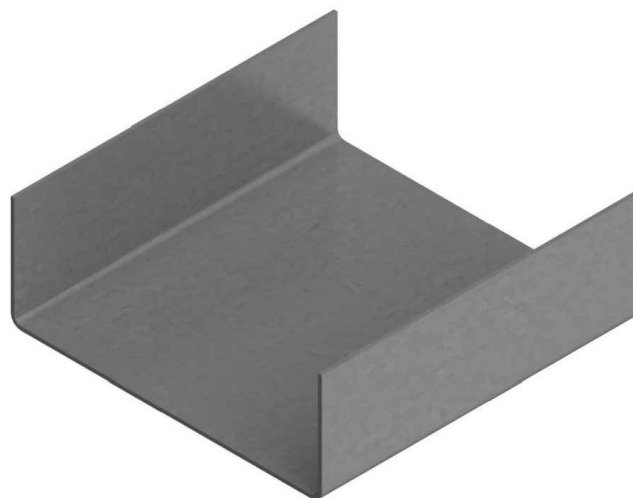
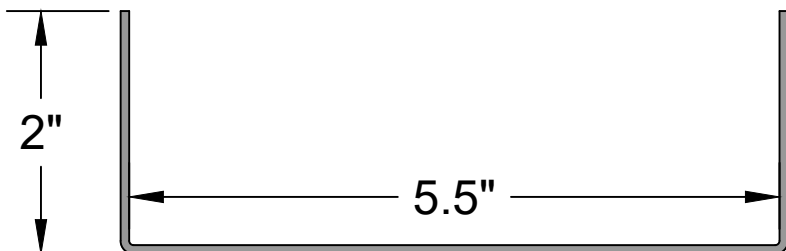
Mill - Gauge	Bend Radius
25 mill = 24 gauge	.0764
30 mill = 22 gauge	.0796
33 mill = 20 gauge	.0764
43 mill = 18 gauge	.0712
54 mill = 16 gauge	.0849
68 mill = 14 gauge	.1069
97 mill = 12 gauge	.1325

400T300

*All calculations should be verified by licensed Engineer
** Full Sectional properties available upon request

Steel Members Documentation

5 1/2" Track

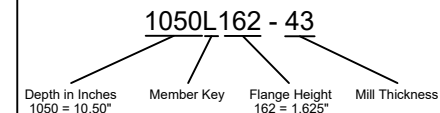


6195 Hwy 52 East
Murrayville GA, 30564
www.BMMetals.com
Office: (706) 864-6068
Fax: (706) 864-2147

Member specs and limits

Name:	550T200
Depth:	5.5"
Flange:	2"
Lip:	0"
Lengths:	6' - 60'
Gauges:	24,22,20,18,16,14,12

Name Breakdown



Member Key

- S** = Stud (C Shaped)
- L** = Lintel (L Shaped)
- T** = Track (U Shaped)
- W** = I-Beam (I Shaped)
- E** = Eave Strut (C Shaped)
- D** = Double Eave Strut
- A** = Angle (2 Legs, 1 Angle)
- F** = Hat (Top Hat Shaped)
- B** = Box (Rectangle Shaped)
- Fl** = Strap/Flat (Flat Shaped)
- Z** = Zee (Z Shaped)

* All members shown in 14 gauge to show detail

Member	Gauge	Fy (ksi)	Area (in ²)	Weight (lbs/ft)	Gross Properties					Effective Properties			Coil
					I _x (in ⁴)	S _x (in ³)	R _x (in)	I _y (in ⁴)	R _y (in)	I _x (in ⁴)	M _d (ft-lb)	M _{da} (ft-lb)	Flat Width
550T200-25	24	50	.1763	.7560	.8087	.2940	2.1412	.0674	.6181	.37036	NA	NA	9.5"
550T200-30	22	50	.2649	.9870	1.210	.4401	2.1373	.1007	.6166	.95690	NA	NA	9.5"
550T200-33	20	50	.3608	1.227	1.722	.6093	2.1847	.1353	.6123	1.3509	754.3	NA	9.5"
550T200-43	18	50	.4555	1.549	2.175	.7670	2.1850	.1697	.6104	2.1750	1201.6	NA	9.5"
550T200-54	16	50	.5408	1.840	2.596	.9113	2.1913	.2003	.6086	2.1714	1585.7	NA	9.5"
550T200-68	14	50	.6829	2.323	3.306	1.150	2.2005	.2505	.6056	2.9296	2166.0	NA	9.5"
550T200-97	12	50	.9382	3.192	4.595	1.576	2.2132	.3380	.6003	4.3856	3326.0	NA	9.5"
											Nominal	9.5"	

*All calculations based on unpunched stud

** Full Sectional properties available upon request

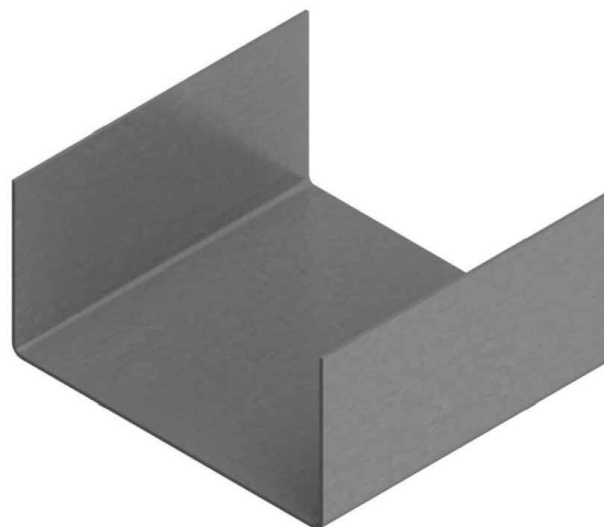
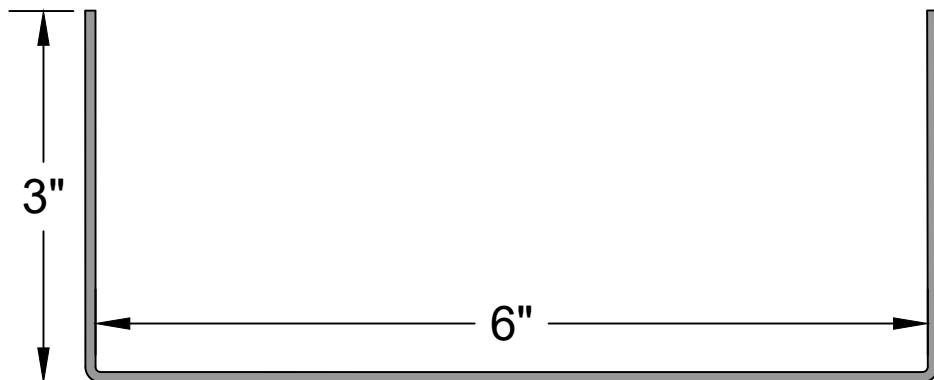
550T200

Mill - Gauge Bend Radius

25 mill = 24 gauge	.0764
30 mill = 22 gauge	.0796
33 mill = 20 gauge	.0764
43 mill = 18 gauge	.0712
54 mill = 16 gauge	.0849
68 mill = 14 gauge	.1069
97 mill = 12 gauge	.1325

Steel Members Documentation

6" Track



6195 Hwy 52 East
Murrayville GA, 30564
www.BMMetals.com
Office: (706) 864-6068
Fax: (706) 864-2147

Member specs and limits

Name:	600T300
Depth:	6"
Flange:	3"
Lip:	0"
Lengths:	6' - 60'
Gauges:	24,22,20,18,16,14,12

Name Breakdown

1050L162 - 43			
Depth in Inches 1050 = 10.50"	Member Key	Flange Height 162 = 1.625"	Mill Thickness

Member Key

- S = Stud (C Shaped)
- L = Lintel (L Shaped)
- T = Track (U Shaped)
- W = I-Beam (I Shaped)
- E = Eave Strut (C Shaped)
- D = Double Eave Strut
- A = Angle (2 Legs, 1 Angle)
- F = Hat (Top Hat Shaped)
- B = Box (Rectangle Shaped)
- Fl = Strap/Flat (Flat Shaped)
- Z = Zee (Z Shaped)

* All members shown in 14 gauge to show detail

Member Name	G	ksi	Area	Weight	Width	Gross Properties (x)			Gross Properties (y)			Torsional Properties				
						lx	Sx	rx	ly	Sy	ry	J	Cw	Xo	Ro	β
600T200-54	16	50	0.557	1.896	9.77	1.927	0.642	1.860	0.118	0.073	0.461	0.00060	1.239	0.957	2.142	0.800
600T200-68	14	50	0.699	2.380	9.71	2.392	0.797	1.850	0.143	0.088	0.453	0.00121	1.524	0.946	2.126	0.802
600T200-97	12	50	0.951	3.236	9.60	3.189	1.063	1.831	0.182	0.111	0.438	0.00311	1.996	0.926	2.098	0.805

Mill - Gauge Bend Radius

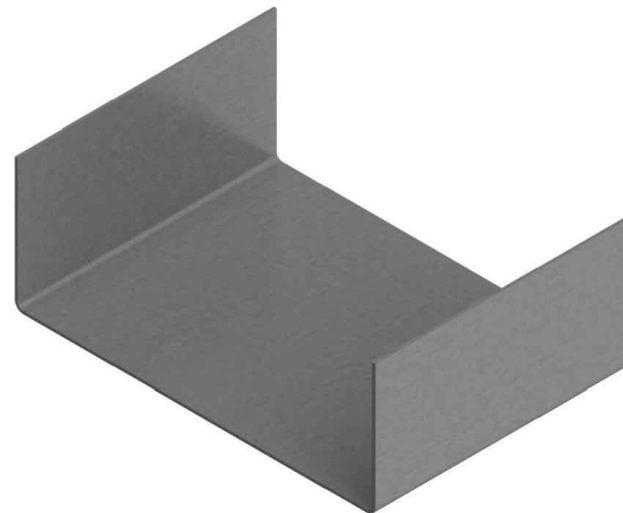
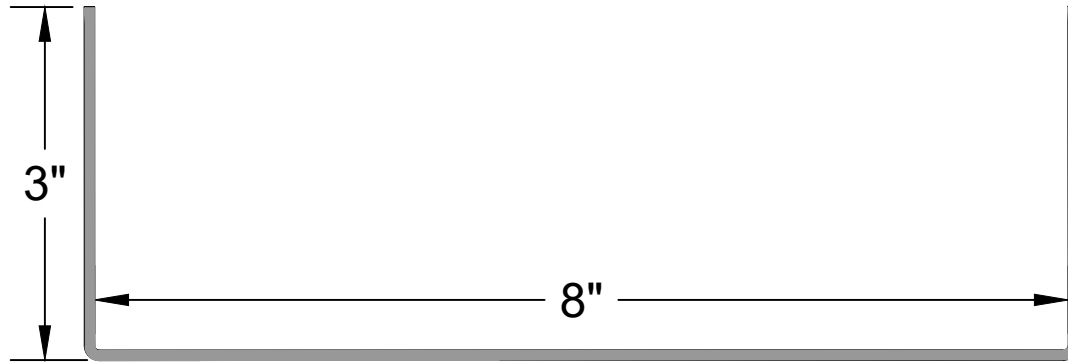
25 mill = 24 gauge	.0764
30 mill = 22 gauge	.0796
33 mill = 20 gauge	.0764
43 mill = 18 gauge	.0712
54 mill = 16 gauge	.0849
68 mill = 14 gauge	.1069
97 mill = 12 gauge	.1325

600T300

*All calculations should be verified by licensed Engineer
** Full Sectional properties available upon request

Steel Members Documentation

8" Track



6195 Hwy 52 East
Murrayville GA, 30564
www.BMMetals.com
Office: (706) 864-6068
Fax: (706) 864-2147

Member specs and limits

Name:	800T300
Depth:	8"
Flange:	3"
Lip:	0"
Lengths:	6' - 60'
Gauges:	24,22,20,18,16,14,12

Name Breakdown

1050L162 - 43			
Depth in Inches 1050 = 10.50"	Member Key	Flange Height 162 = 1.625"	Mill Thickness

Member Key

- S** = Stud (C Shaped)
- L** = Lintel (L Shaped)
- T** = Track (U Shaped)
- W** = I-Beam (I Shaped)
- E** = Eave Strut (C Shaped)
- D** = Double Eave Strut
- A** = Angle (2 Legs, 1 Angle)
- F** = Hat (Top Hat Shaped)
- B** = Box (Rectangle Shaped)
- Fl** = Strap/Flat (Flat Shaped)
- Z** = Zee (Z Shaped)

Mill - Gauge Bend Radius

25 mill = 24 gauge	.0764
30 mill = 22 gauge	.0796
33 mill = 20 gauge	.0764
43 mill = 18 gauge	.0712
54 mill = 16 gauge	.0849
68 mill = 14 gauge	.1069
97 mill = 12 gauge	.1325

* All members shown in 14 gauge to show detail

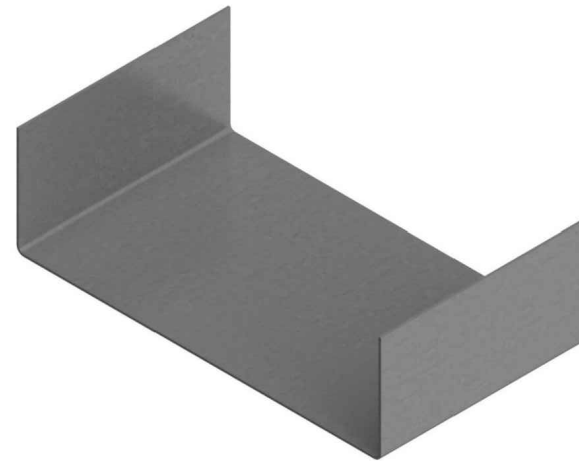
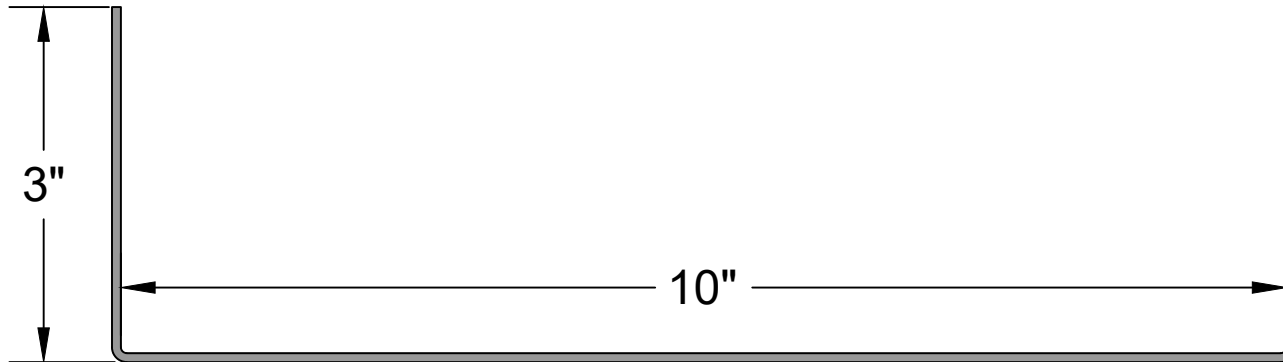
Member Name	G	ksi	Area	Weight	Width	Gross Properties (x)			Gross Properties (y)			Torsional Properties				
						lx	Sx	rx	ly	Sy	ry	J	Cw	Xo	Ro	β
800T200-54	16	50	0.671	2.284	11.77	3.442	0.860	2.265	0.131	0.078	0.443	0.00073	2.435	0.957	2.498	0.853
800T200-68	14	50	0.843	2.870	11.71	4.280	1.070	2.253	0.159	0.094	0.435	0.00146	3.000	0.946	2.482	0.855
800T200-97	12	50	1.149	3.910	11.60	5.717	1.429	2.231	0.203	0.119	0.420	0.00375	3.941	0.926	2.452	0.857

800T300

*All calculations should be verified by licensed Engineer
** Full Sectional properties available upon request

Steel Members Documentation

10" Track

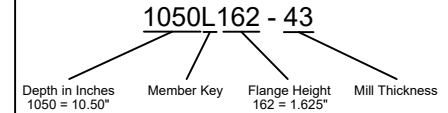


6195 Hwy 52 East
Murrayville GA, 30564
www.BMMetals.com
Office: (706) 864-6068
Fax: (706) 864-2147

Member specs and limits

Name:	1000T300
Depth:	10"
Flange:	3"
Lip:	0"
Lengths:	6' - 60'
Gauges:	24,22,20,18,16,14,12

Name Breakdown



Member Key

- S** = Stud (C Shaped)
- L** = Lintel (L Shaped)
- T** = Track (U Shaped)
- W** = I-Beam (I Shaped)
- E** = Eave Strut (C Shaped)
- D** = Double Eave Strut
- A** = Angle (2 Legs, 1 Angle)
- F** = Hat (Top Hat Shaped)
- B** = Box (Rectangle Shaped)
- Fl** = Strap/Flat (Flat Shaped)
- Z** = Zee (Z Shaped)

Mill - Gauge Bend Radius

25 mill = 24 gauge	.0764
30 mill = 22 gauge	.0796
33 mill = 20 gauge	.0764
43 mill = 18 gauge	.0712
54 mill = 16 gauge	.0849
68 mill = 14 gauge	.1069
97 mill = 12 gauge	.1325

* All members shown in 14 gauge to show detail

Member Name	Gross Properties (x)					Gross Properties (y)			Torsional Properties							
	G	ksi	Area	Weight	Width	lx	Sx	rx	ly	Sy	ry	J	Cw	Xo	Ro	β
1000T300-54	16	50	0.785	2.672	13.77	5.393	1.079	2.621	0.141	0.081	0.424	0.00085	4.101	0.957	2.822	0.885
1000T300-68	14	50	0.987	3.360	13.71	6.712	1.342	2.607	0.171	0.098	0.416	0.00171	5.055	0.946	2.805	0.886
1000T300-97	12	50	1.347	4.583	13.60	8.980	1.796	2.582	0.218	0.124	0.402	0.00440	6.651	0.926	2.772	0.889

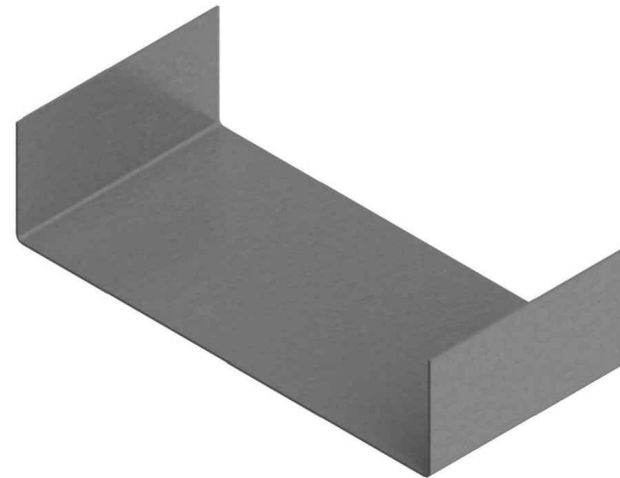
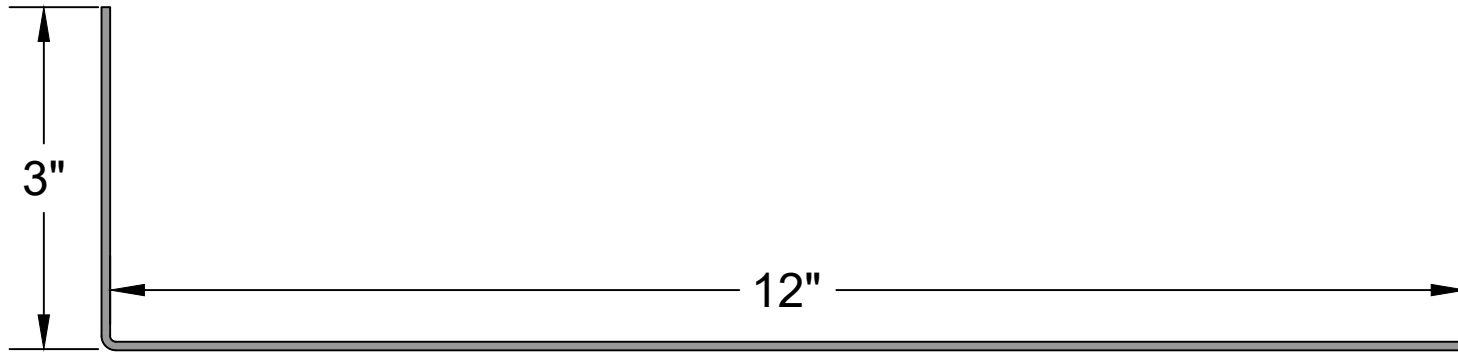
1000T300

*All calculations should be verified by licensed Engineer

** Full Sectional properties available upon request

Steel Members Documentation

12" Track



6195 Hwy 52 East
Murrayville GA, 30564
www.BMMetals.com
Office: (706) 864-6068
Fax: (706) 864-2147

Member specs and limits

Name:	1200T300
Depth:	12"
Flange:	3"
Lip:	0"
Lengths:	6' - 60'
Gauges:	24,22,20,18,16,14,12

Name Breakdown

1050L162 - 43			
Depth in Inches 1050 = 10.50"	Member Key	Flange Height 162 = 1.625"	Mill Thickness 43

Member Key

- S** = Stud (C Shaped)
- L** = Lintel (L Shaped)
- T** = Track (U Shaped)
- W** = I-Beam (I Shaped)
- E** = Eave Strut (C Shaped)
- D** = Double Eave Strut
- A** = Angle (2 Legs, 1 Angle)
- F** = Hat (Top Hat Shaped)
- B** = Box (Rectangle Shaped)
- Fl** = Strap/Flat (Flat Shaped)
- Z** = Zee (Z Shaped)

* All members shown in 14 gauge to show detail

Member Name	G	ksi	Area	Weight	Width	Gross Properties (x)			Gross Properties (y)			Torsional Properties				
						I _x	S _x	r _x	I _y	S _y	r _y	J	C _w	X _o	R _o	β
1200T300-54	16	50	1.013	3.447	17.77	11.85	1.974	3.420	0.466	0.185	0.679	0.00110	19.09	1.457	3.779	0.851
1200T300-68	14	50	1.275	4.340	17.71	14.81	2.468	3.408	0.574	0.227	0.671	0.00220	23.71	1.446	3.762	0.852
1200T300-97	12	50	1.743	5.931	17.60	19.99	3.331	3.386	0.752	0.296	0.657	0.00569	31.64	1.426	3.733	0.854

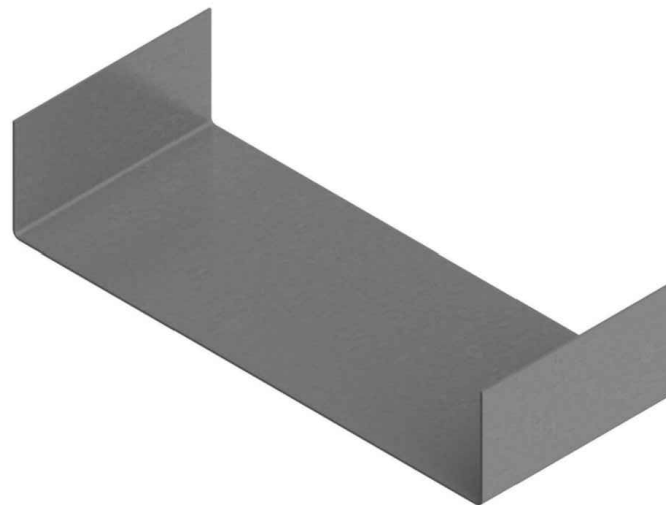
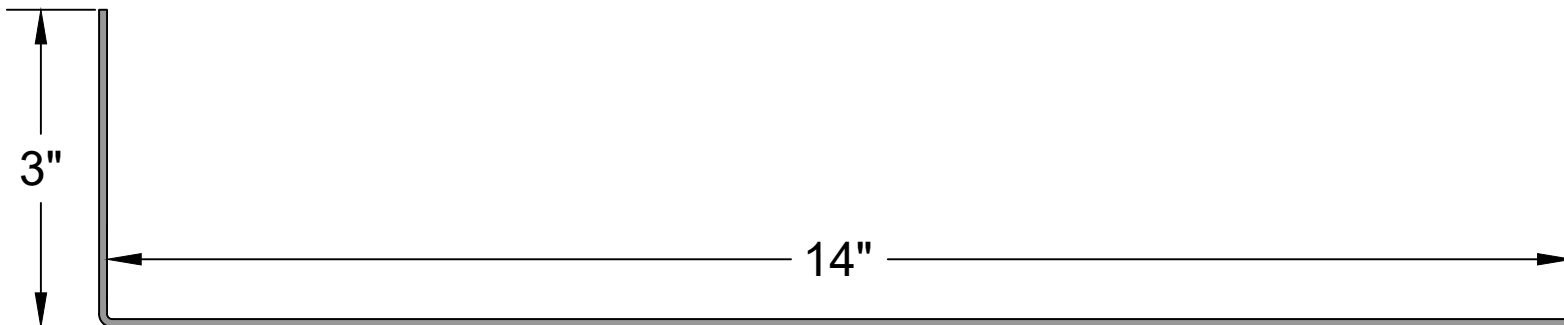
Mill - Gauge	Bend Radius
25 mill = 24 gauge	.0764
30 mill = 22 gauge	.0796
33 mill = 20 gauge	.0764
43 mill = 18 gauge	.0712
54 mill = 16 gauge	.0849
68 mill = 14 gauge	.1069
97 mill = 12 gauge	.1325

1200T300

*All calculations should be verified by licensed Engineer
** Full Sectional properties available upon request

Steel Members Documentation

14" Track



6195 Hwy 52 East
Murrayville GA, 30564
www.BMMetals.com
Office: (706) 864-6068
Fax: (706) 864-2147

Member specs and limits

Name:	1400T300
Depth:	14"
Flange:	3"
Lip:	0"
Lengths:	6' - 60'
Gauges:	24,22,20,18,16,14,12

Name Breakdown

1050L162 - 43

Depth in Inches 1050 = 10.50"	Member Key L	Flange Height 162 = 1.625"	Mill Thickness 43
----------------------------------	-----------------	-------------------------------	----------------------

Member Key

- S** = Stud (C Shaped)
- L** = Lintel (L Shaped)
- T** = Track (U Shaped)
- W** = I-Beam (I Shaped)
- E** = Eave Strut (C Shaped)
- D** = Double Eave Strut
- A** = Angle (2 Legs, 1 Angle)
- F** = Hat (Top Hat Shaped)
- B** = Box (Rectangle Shaped)
- FI** = Strap/Flat (Flat Shaped)
- Z** = Zee (Z Shaped)

* All members shown in 14 gauge to show detail

Member Name	Gross Properties (x)					Gross Properties (y)			Torsional Properties							
	G	ksi	Area	Weight	Width	lx	Sx	rx	ly	Sy	ry	J	Cw	Xo	Ro	β
1400T300-54	16	50	1.127	3.835	19.77	16.15	2.307	3.785	0.490	0.191	0.659	0.00122	27.35	1.457	4.109	0.874
1400T300-68	14	50	1.419	4.830	19.71	20.19	2.885	3.772	0.603	0.234	0.652	0.00245	33.99	1.446	4.092	0.875
1400T300-97	12	50	1.941	6.605	19.60	27.27	3.896	3.748	0.790	0.306	0.638	0.00634	45.38	1.426	4.061	0.877

Mill - Gauge	Bend Radius
25 mill = 24 gauge	.0764
30 mill = 22 gauge	.0796
33 mill = 20 gauge	.0764
43 mill = 18 gauge	.0712
54 mill = 16 gauge	.0849
68 mill = 14 gauge	.1069
97 mill = 12 gauge	.1325

1400T300

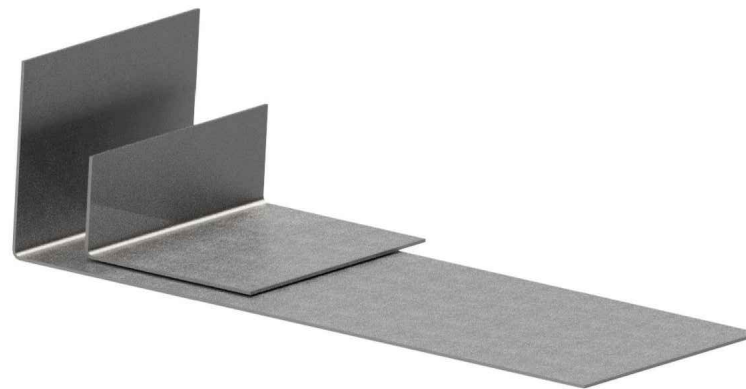
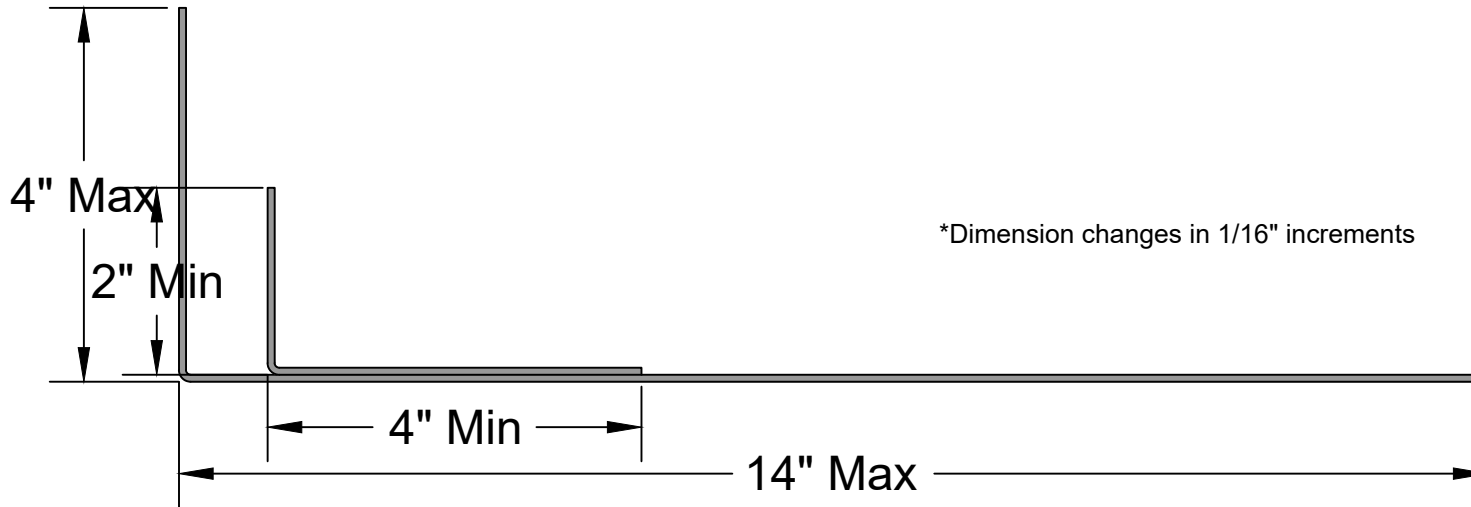
*All calculations should be verified by licensed Engineer
** Full Sectional properties available upon request



Angle Brochure Galvanized

Steel Members Documentation

Custom Angle



* All members shown in 14 gauge to show detail



6195 Hwy 52 East
Murrayville GA, 30564
www.BMMetals.com
Office: (706) 864-6068
Fax: (706) 864-2147

Member specs and limits

Name:	DepthAFlange
Depth:	4" - 14"
Flange:	2" - 4"
Lip:	NA
Lengths:	6' - 60'
Gauges:	24,22,20,18,16,14,12

Name Breakdown

1050L162 - 43

Depth in Inches	Member Key	Flange Height	Mill Thickness
1050 = 10.50"		162 = 1.625"	

Member Key

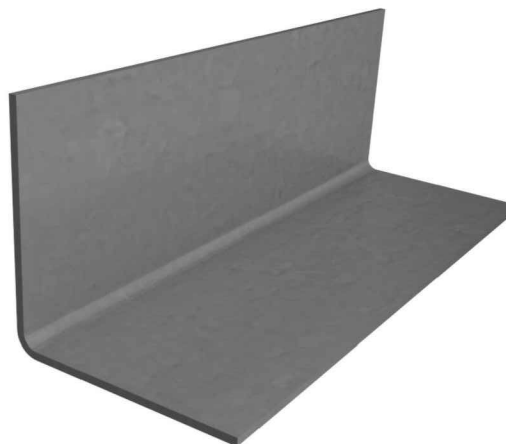
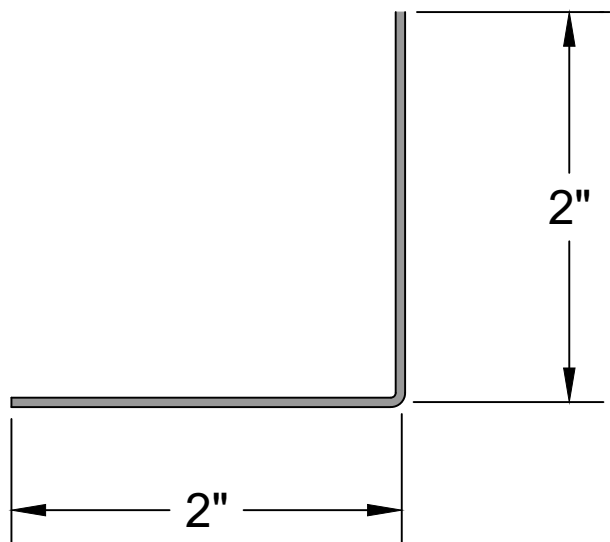
- S = Stud (C Shaped)
- L = Lintel (L Shaped)
- T = Track (U Shaped)
- W = I-Beam (I Shaped)
- E = Eave Strut (C Shaped)
- D = Double Eave Strut
- A = Angle (2 Legs, 1 Angle)
- F = Hat (Top Hat Shaped)
- B = Box (Rectangle Shaped)
- Fl = Strap/Flat (Flat Shaped)
- Z = Zee (Z Shaped)

Mill - Gauge	Bend Radius
25 mill = 24 gauge	.0764
30 mill = 22 gauge	.0796
33 mill = 20 gauge	.0764
43 mill = 18 gauge	.0712
54 mill = 16 gauge	.0849
68 mill = 14 gauge	.1069
97 mill = 12 gauge	.1325

CUSTOM_ANGLE

Steel Members Documentation

2" X 2" Angle



6195 Hwy 52 East
Murrayville GA, 30564
www.BMMetals.com
Office: (706) 864-6068
Fax: (706) 864-2147

Member specs and limits

Name:	200A200
Depth:	2"
Flange:	2"
Lip:	0"
Lengths:	6' - 60'
Gauges:	24,22,20,18,16,14,12

Name Breakdown

1050L162 - 43			
Depth in Inches 1050 = 10.50"	Member Key	Flange Height 162 = 1.625"	Mill Thickness

Member Key

- S** = Stud (C Shaped)
- L** = Lintel (L Shaped)
- T** = Track (U Shaped)
- W** = I-Beam (I Shaped)
- E** = Eave Strut (C Shaped)
- D** = Double Eave Strut
- A** = Angle (2 Legs, 1 Angle)
- F** = Hat (Top Hat Shaped)
- B** = Box (Rectangle Shaped)
- Fl** = Strap/Flat (Flat Shaped)
- Z** = Zee (Z Shaped)

Mill - Gauge Bend Radius

25 mill = 24 gauge	.0764
30 mill = 22 gauge	.0796
33 mill = 20 gauge	.0764
43 mill = 18 gauge	.0712
54 mill = 16 gauge	.0849
68 mill = 14 gauge	.1069
97 mill = 12 gauge	.1325

* All members shown in 14 gauge to show detail

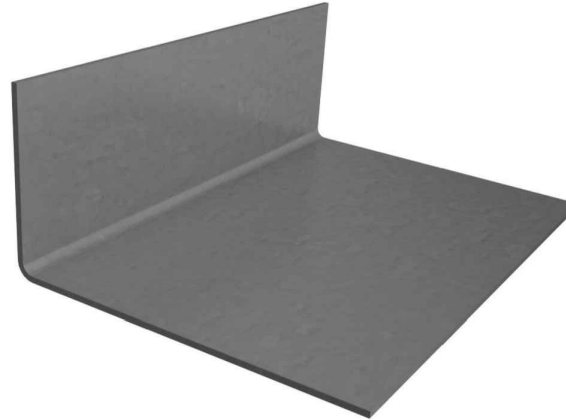
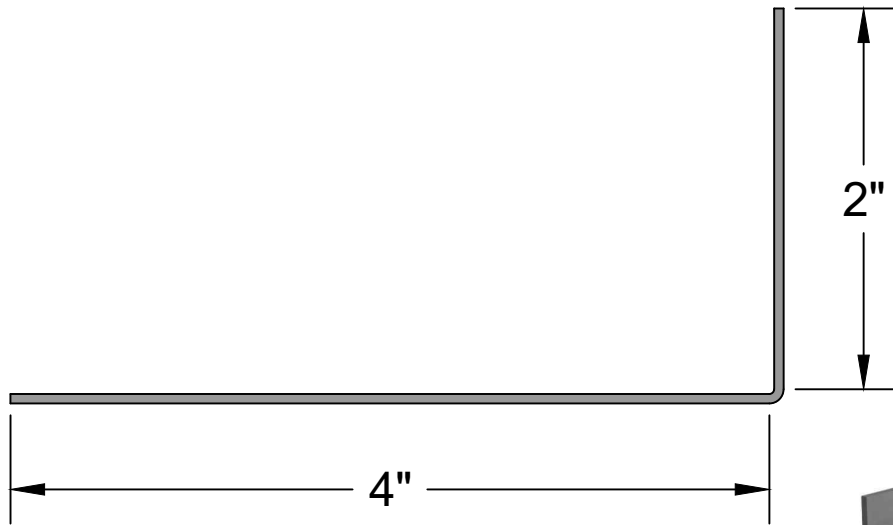
Member Name	G	ksi	Area	Weight	Width	Gross Properties (x)			Gross Properties (y)		
						lx	Sx	rx	ly	Sy	ry
200A200-54	16	50	0.225	0.763	4	0.066	0.541	0.045	0.066	0.541	0.045
200A200-68	14	50	0.283	0.960	4	0.083	0.541	0.057	0.083	0.541	0.057
200A200-97	12	50	0.386	1.312	4	0.113	0.541	0.078	0.113	0.541	0.078

200A200

*All calculations should be verified by licensed Engineer
** Full Sectional properties available upon request

Steel Members Documentation

4" X 2" Angle



6195 Hwy 52 East
Murrayville GA, 30564
www.BMMetals.com
Office: (706) 864-6068
Fax: (706) 864-2147

Member specs and limits

Name:	400A200
Depth:	4"
Flange:	2"
Lip:	0"
Lengths:	6' - 60'
Gauges:	24,22,20,18,16,14,12

Name Breakdown

1050L162 - 43

Depth in Inches 1050 = 10.50"	Member Key L	Flange Height 162 = 1.625"	Mill Thickness 43
----------------------------------	-----------------	-------------------------------	----------------------

Member Key

- S** = Stud (C Shaped)
- L** = Lintel (L Shaped)
- T** = Track (U Shaped)
- W** = I-Beam (I Shaped)
- E** = Eave Strut (C Shaped)
- D** = Double Eave Strut
- A** = Angle (2 Legs, 1 Angle)
- F** = Hat (Top Hat Shaped)
- B** = Box (Rectangle Shaped)
- Fl** = Strap/Flat (Flat Shaped)
- Z** = Zee (Z Shaped)

Mill - Gauge Bend Radius

25 mill = 24 gauge	.0764
30 mill = 22 gauge	.0796
33 mill = 20 gauge	.0764
43 mill = 18 gauge	.0712
54 mill = 16 gauge	.0849
68 mill = 14 gauge	.1069
97 mill = 12 gauge	.1325

* All members shown in 14 gauge to show detail

Member Name	G	ksi	Area	Weight	Width	Gross Properties (x)			Gross Properties (y)		
						Ix	Sx	rx	Iy	Sy	ry
400A200-54	16	50	0.339	1.150	6	0.316	0.966	0.218	0.439	1.139	0.302
400A200-68	14	50	0.427	1.449	6	0.399	0.967	0.275	0.554	1.139	0.381
400A200-97	12	50	0.584	1.984	6	0.549	0.969	0.378	0.758	1.139	0.522

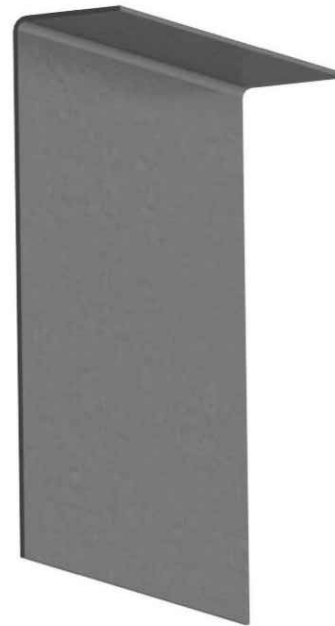
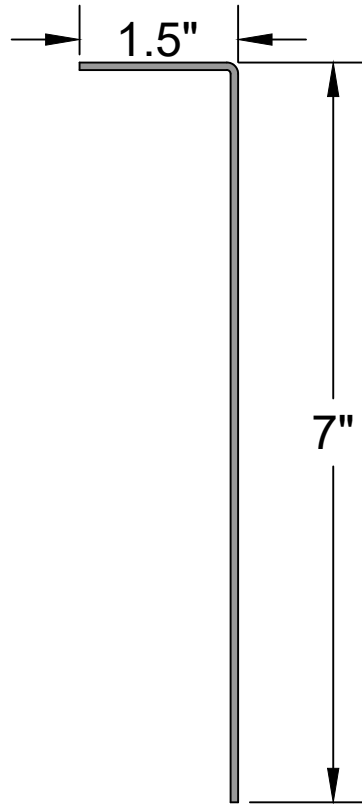
400A200

*All calculations should be verified by licensed Engineer

** Full Sectional properties available upon request

Steel Members Documentation

1 1/2" x 7" Lintel



6195 Hwy 52 East
Murrayville GA, 30564
www.BMMetals.com
Office: (706) 864-6068
Fax: (706) 864-2147

Member specs and limits

Name:	700A150
Depth:	7"
Flange:	1.5"
Lip:	0"
Lengths:	6' - 60'
Gauges:	24,22,20,18,16,14,12

Name Breakdown

1050L162 - 43

Depth in Inches Member Key Flange Height Mill Thickness
1050 = 10.50" 162 = 1.625"

Member Key

- S = Stud (C Shaped)
- L = Lintel (L Shaped)
- T = Track (U Shaped)
- W = I-Beam (I Shaped)
- E = Eave Strut (C Shaped)
- D = Double Eave Strut
- A = Angle (2 Legs, 1 Angle)
- F = Hat (Top Hat Shaped)
- B = Box (Rectangle Shaped)
- FI = Strap/Flat (Flat Shaped)
- Z = Zee (Z Shaped)

Member	Gauge	Fy (ksi)	Weight (lbs/ft)	Coil Flat Width
700A150-25	24	50	.720	8.5"
700A150-30	22	50	.867	8.5"
700A150-33	20	50	1.10	8.5"
700A150-43	18	50	1.39	8.5"
700A150-54	16	50	1.65	8.5"
700A150-68	14	50	2.08	8.5"
700A150-97	12	50	2.86	8.5"
Nominal				8.5"

Mill - Gauge Bend Radius

25 mill = 24 gauge	.0764
30 mill = 22 gauge	.0796
33 mill = 20 gauge	.0764
43 mill = 18 gauge	.0712
54 mill = 16 gauge	.0849
68 mill = 14 gauge	.1069
97 mill = 12 gauge	.1325

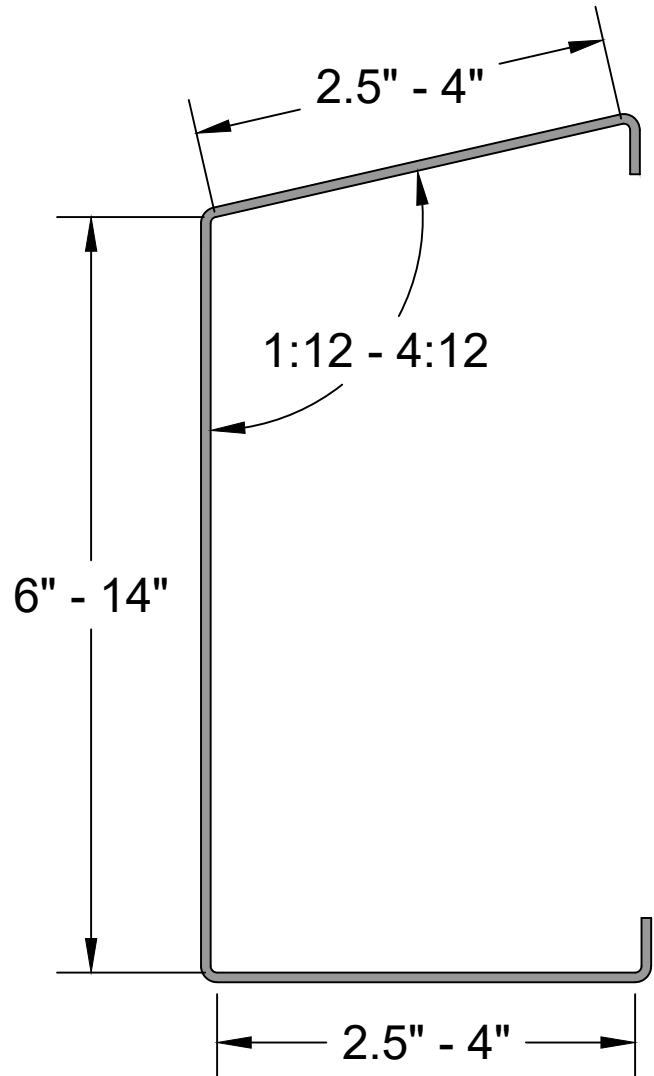
700A150



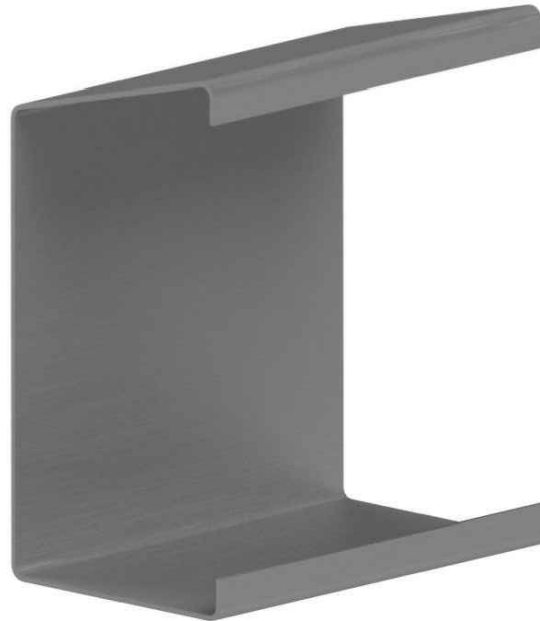
Eave Strut Brochure Galvanized

Steel Members Documentation

Custom Eave Strut



* Angle of Eave Strut needs to be specified.
Example has a $\frac{3}{12}$ pitch.



6195 Hwy 52 East
Murrayville GA, 30564
www.BMMetals.com
Office: (706) 864-6068
Fax: (706) 864-2147

Member specs and limits

Name:	DepthEFlange
Depth:	6" - 14"
Flange:	2.5" - 4"
Lip:	.5"
Lengths:	6' - 60'
Gauges:	24,22,20,18,16,14,12

Name Breakdown

1050L162 - 43

Depth in Inches 1050 = 10.50"	Member Key	Flange Height 162 = 1.625"	Mill Thickness
----------------------------------	------------	-------------------------------	----------------

Member Key

- S = Stud (C Shaped)
- L = Lintel (L Shaped)
- T = Track (U Shaped)
- W = I-Beam (I Shaped)
- E = Eave Strut (C Shaped)
- D = Double Eave Strut
- A = Angle (2 Legs, 1 Angle)
- F = Hat (Top Hat Shaped)
- B = Box (Rectangle Shaped)
- FI = Strap/Flat (Flat Shaped)
- Z = Zee (Z Shaped)

Mill - Gauge	Bend Radius
25 mill = 24 gauge	.0764
30 mill = 22 gauge	.0796
33 mill = 20 gauge	.0764
43 mill = 18 gauge	.0712
54 mill = 16 gauge	.0849
68 mill = 14 gauge	.1069
97 mill = 12 gauge	.1325

* All members shown in 14 gauge to show detail

CUSTOM_EAVE_STRUT

Steel Members Documentation

6" x 3.5" Eave Strut Single Slope



6195 Hwy 52 East
Murrayville GA, 30564
www.BMMetals.com
Office: (706) 864-6068
Fax: (706) 864-2147

Member specs and limits

Name:	600E350
Depth:	6"
Flange:	3.5"
Lip:	.5"
Lengths:	6' - 60'
Gauges:	16, 14, 12

Name Breakdown

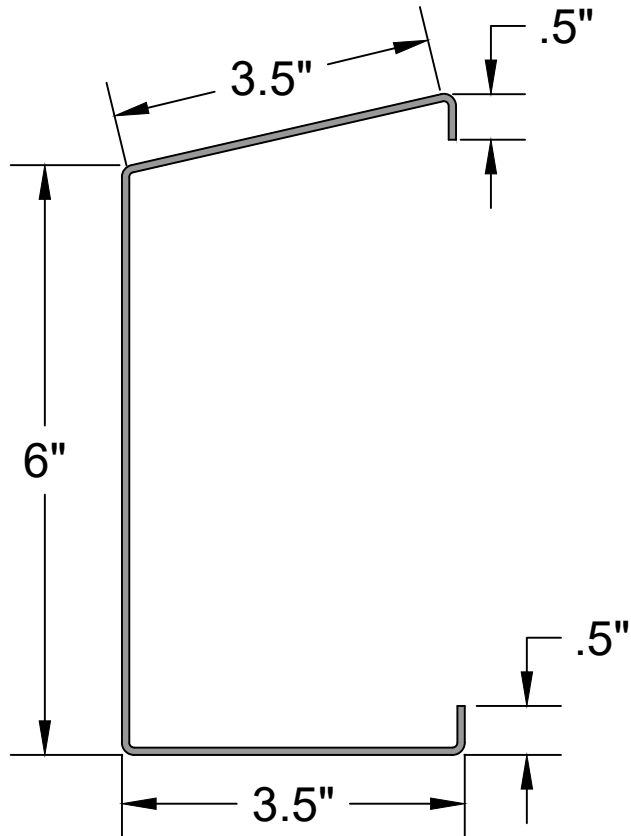
1050L162 - 43			
Depth in Inches 1050 = 10.50"	Member Key	Flange Height 162 = 1.625"	Mill Thickness

Member Key

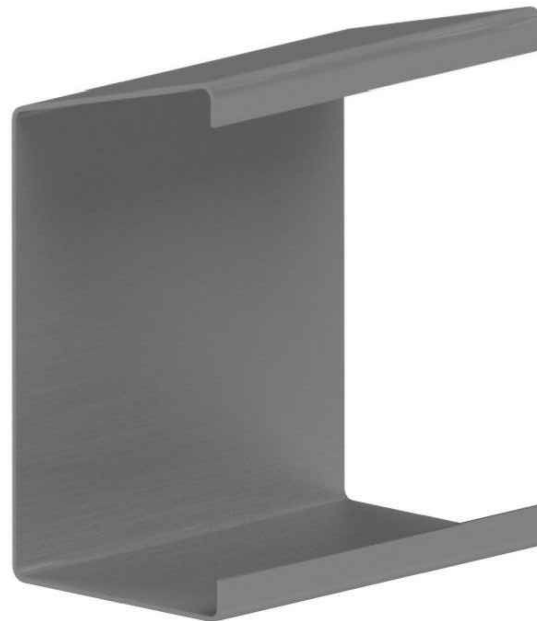
- S** = Stud (C Shaped)
- L** = Lintel (L Shaped)
- T** = Track (U Shaped)
- W** = I-Beam (I Shaped)
- E** = Eave Strut (C Shaped)
- D** = Double Eave Strut
- A** = Angle (2 Legs, 1 Angle)
- F** = Hat (Top Hat Shaped)
- B** = Box (Rectangle Shaped)
- Fl** = Strap/Flat (Flat Shaped)
- Z** = Zee (Z Shaped)

Mill - Gauge	Bend Radius
--------------	-------------

25 mill = 24 gauge	.0764
30 mill = 22 gauge	.0796
33 mill = 20 gauge	.0764
43 mill = 18 gauge	.0712
54 mill = 16 gauge	.0849
68 mill = 14 gauge	.1069
97 mill = 12 gauge	.1325



* Angle of Eave Strut needs to be specified.
Example has a $\frac{3}{12}$ pitch.



600E350

Steel Members Documentation

8" x 3.5" Eave Strut Single Slope



6195 Hwy 52 East
Murrayville GA, 30564
www.BMMetals.com
Office: (706) 864-6068
Fax: (706) 864-2147

Member specs and limits

Name:	800E350
Depth:	8"
Flange:	3.5"
Lip:	.5"
Lengths:	6' - 60'
Gauges:	16, 14, 12

Name Breakdown

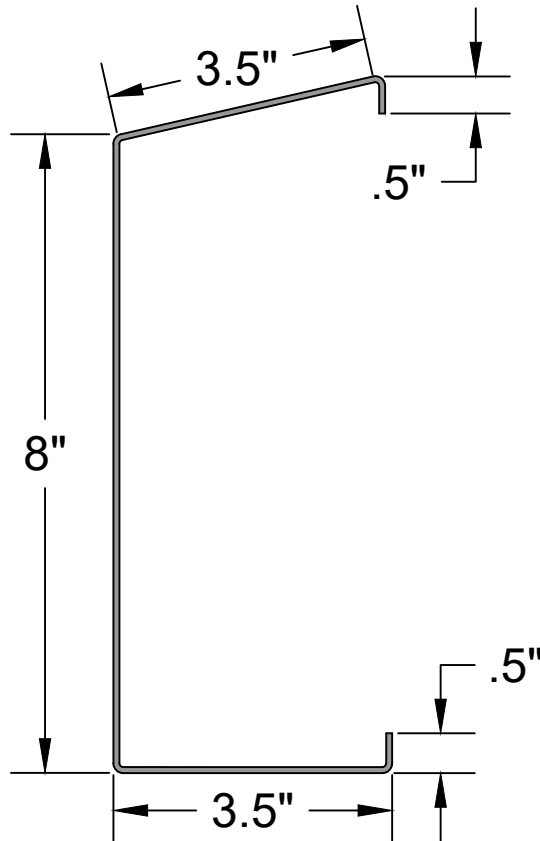
1050L162 - 43

Depth in Inches	Member Key	Flange Height	Mill Thickness
1050 = 10.50"		162 = 1.625"	

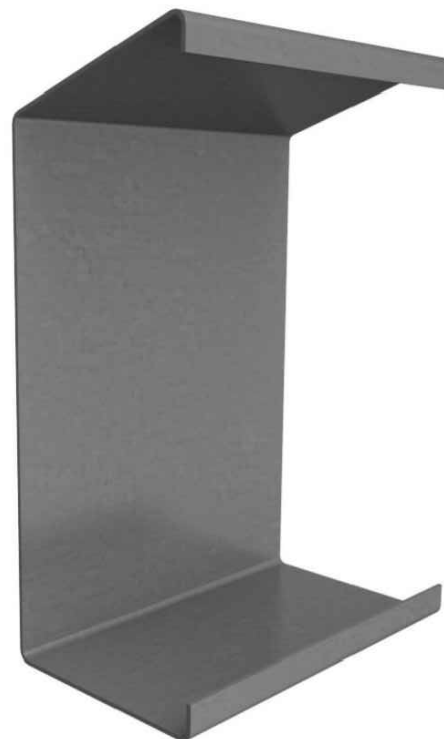
Member Key

S = Stud (C Shaped)
L = Lintel (L Shaped)
T = Track (U Shaped)
W = I-Beam (I Shaped)
E = Eave Strut (C Shaped)
D = Double Eave Strut
A = Angle (2 Legs, 1 Angle)
F = Hat (Top Hat Shaped)
B = Box (Rectangle Shaped)
Fl = Strap/Flat (Flat Shaped)
Z = Zee (Z Shaped)

Mill - Gauge	Bend Radius
25 mill = 24 gauge	.0764
30 mill = 22 gauge	.0796
33 mill = 20 gauge	.0764
43 mill = 18 gauge	.0712
54 mill = 16 gauge	.0849
68 mill = 14 gauge	.1069
97 mill = 12 gauge	.1325



*Angle of Eave Strut needs to be specified.
Example has a $\frac{3}{12}$ pitch.



800E350

Steel Members Documentation

10" x 3.5" Eave Strut Single Slope



6195 Hwy 52 East
Murrayville GA, 30564
www.BMMetals.com
Office: (706) 864-6068
Fax: (706) 864-2147

Member specs and limits

Name:	1000E350
Depth:	10"
Flange:	3.5"
Lip:	.5"
Lengths:	6' - 60'
Gauges:	16, 14, 12

Name Breakdown

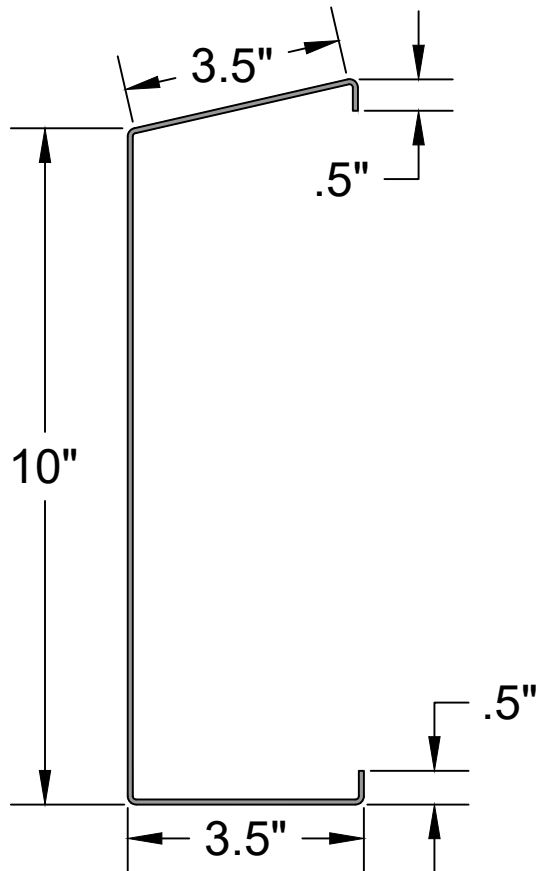
1050L162 - 43			
Depth in Inches 1050 = 10.50"	Member Key	Flange Height 162 = 1.625"	Mill Thickness

Member Key

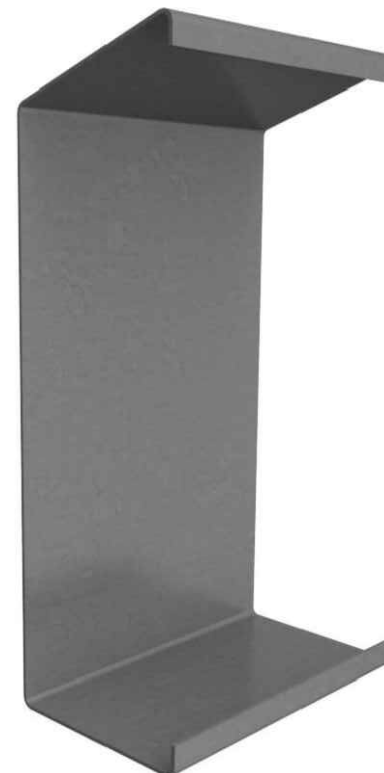
- S = Stud (C Shaped)
- L = Lintel (L Shaped)
- T = Track (U Shaped)
- W = I-Beam (I Shaped)
- E = Eave Strut (C Shaped)
- D = Double Eave Strut
- A = Angle (2 Legs, 1 Angle)
- F = Hat (Top Hat Shaped)
- B = Box (Rectangle Shaped)
- Fl = Strap/Flat (Flat Shaped)
- Z = Zee (Z Shaped)

Mill - Gauge Bend Radius

25 mill = 24 gauge	.0764
30 mill = 22 gauge	.0796
33 mill = 20 gauge	.0764
43 mill = 18 gauge	.0712
54 mill = 16 gauge	.0849
68 mill = 14 gauge	.1069
97 mill = 12 gauge	.1325



*Angle of Eave Strut needs to be specified.
Example has a $\frac{3}{12}$ pitch.



1000E350

Steel Members Documentation

12" x 3.5" Eave Strut Single Slope



6195 Hwy 52 East
Murrayville GA, 30564
www.BMMetals.com
Office: (706) 864-6068
Fax: (706) 864-2147

Member specs and limits

Name:	1200E350
Depth:	12"
Flange:	3.5"
Lip:	.5"
Lengths:	6' - 60'
Gauges:	16,14,12

Name Breakdown

1050L162 - 43

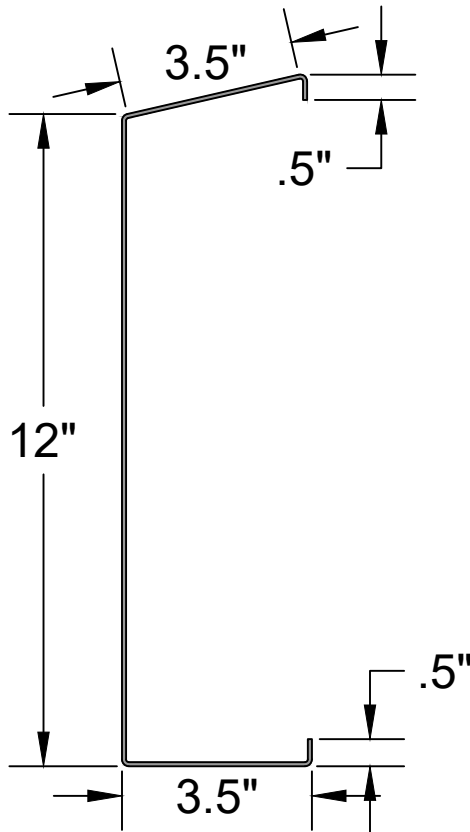
Depth in Inches 1050 = 10.50"	Member Key L	Flange Height 162 = 1.625"	Mill Thickness 43
----------------------------------	-----------------	-------------------------------	----------------------

Member Key

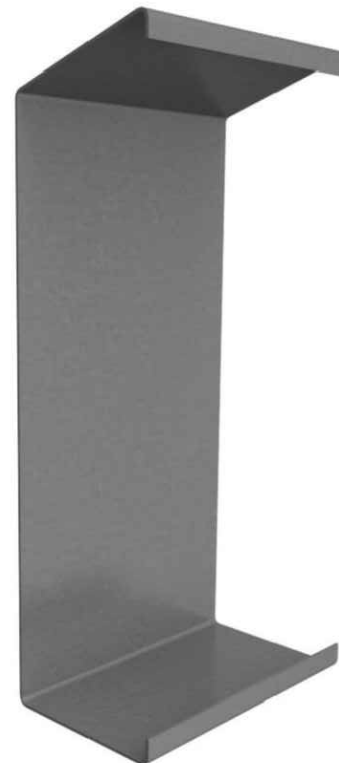
- S** = Stud (C Shaped)
- L** = Lintel (L Shaped)
- T** = Track (U Shaped)
- W** = I-Beam (I Shaped)
- E** = Eave Strut (C Shaped)
- D** = Double Eave Strut
- A** = Angle (2 Legs, 1 Angle)
- F** = Hat (Top Hat Shaped)
- B** = Box (Rectangle Shaped)
- FI** = Strap/Flat (Flat Shaped)
- Z** = Zee (Z Shaped)

Mill - Gauge Bend Radius

25 mill = 24 gauge	.0764
30 mill = 22 gauge	.0796
33 mill = 20 gauge	.0764
43 mill = 18 gauge	.0712
54 mill = 16 gauge	.0849
68 mill = 14 gauge	.1069
97 mill = 12 gauge	.1325



*Angle of Eave Strut needs to be specified.
Example has a $\frac{3}{12}$ pitch.



1200E350

Steel Members Documentation

6" x 3.5" Eave Strut Double Slope



6195 Hwy 52 East
Murrayville GA, 30564
www.BMMetals.com
Office: (706) 864-6068
Fax: (706) 864-2147

Member specs and limits

Name:	600DE350
Depth:	6"
Flange:	3.5"
Lip:	.5"
Lengths:	6' - 60'
Gauges:	16, 14, 12

Name Breakdown

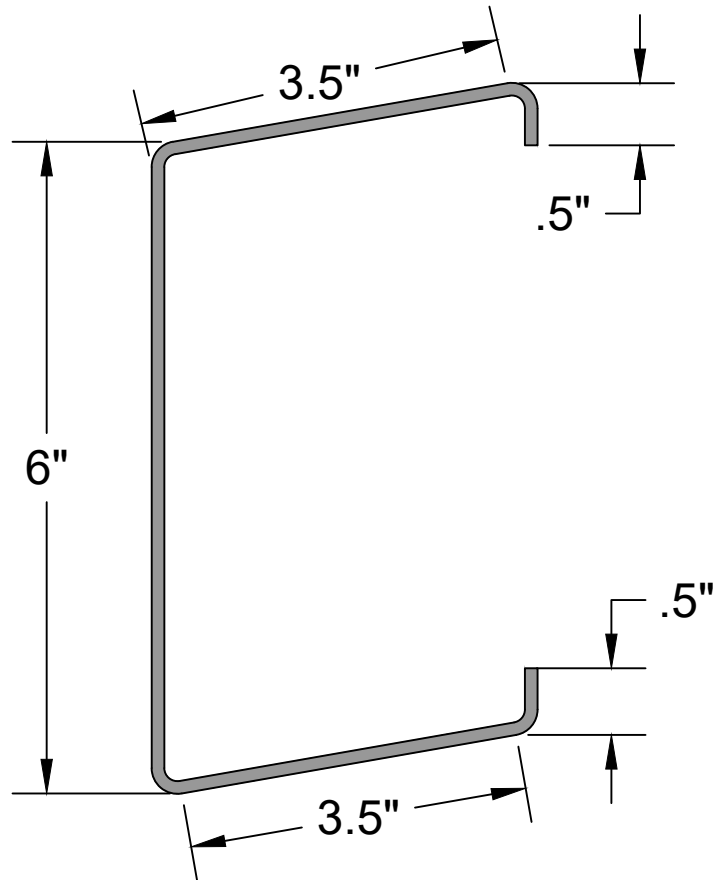
1050L162 - 43			
Depth in Inches 1050 = 10.50"	Member Key	Flange Height 162 = 1.625"	Mill Thickness

Member Key

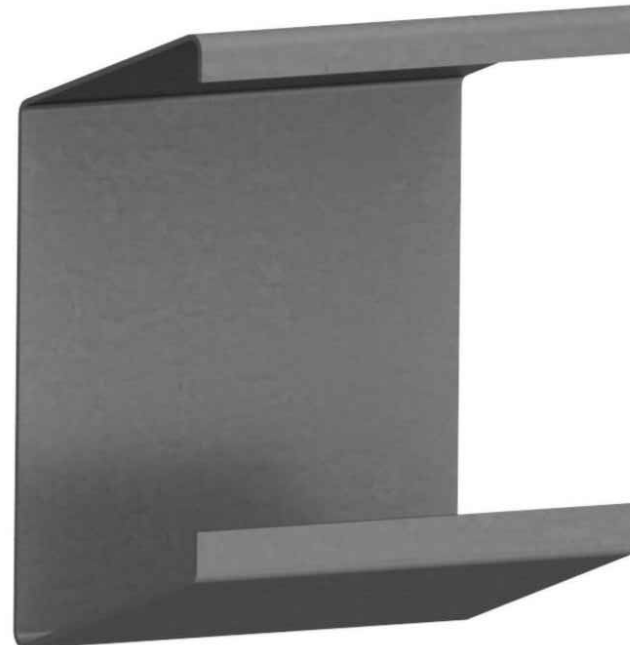
- S = Stud (C Shaped)
- L = Lintel (L Shaped)
- T = Track (U Shaped)
- W = I-Beam (I Shaped)
- E = Eave Strut (C Shaped)
- D = Double Eave Strut
- A = Angle (2 Legs, 1 Angle)
- F = Hat (Top Hat Shaped)
- B = Box (Rectangle Shaped)
- Fl = Strap/Flat (Flat Shaped)
- Z = Zee (Z Shaped)

Mill - Gauge Bend Radius

25 mill = 24 gauge	.0764
30 mill = 22 gauge	.0796
33 mill = 20 gauge	.0764
43 mill = 18 gauge	.0712
54 mill = 16 gauge	.0849
68 mill = 14 gauge	.1069
97 mill = 12 gauge	.1325



*Angle of Eave Strut needs to be specified.
Example has a $\frac{3}{12}$ pitch.



600E350

Steel Members Documentation

8" x 3.5" Eave Strut Double Slope



6195 Hwy 52 East
Murrayville GA, 30564
www.BMMetals.com
Office: (706) 864-6068
Fax: (706) 864-2147

Member specs and limits

Name:	800DE350
Depth:	8"
Flange:	3.5"
Lip:	.5"
Lengths:	6' - 60'
Gauges:	16, 14, 12

Name Breakdown

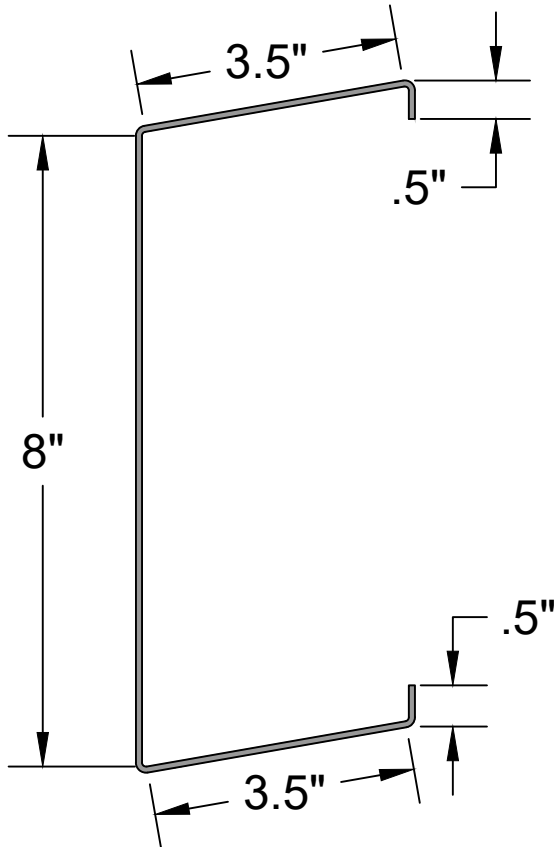
1050L162 - 43			
Depth in Inches 1050 = 10.50"	Member Key L	Flange Height 162 = 1.625"	Mill Thickness 43

Member Key

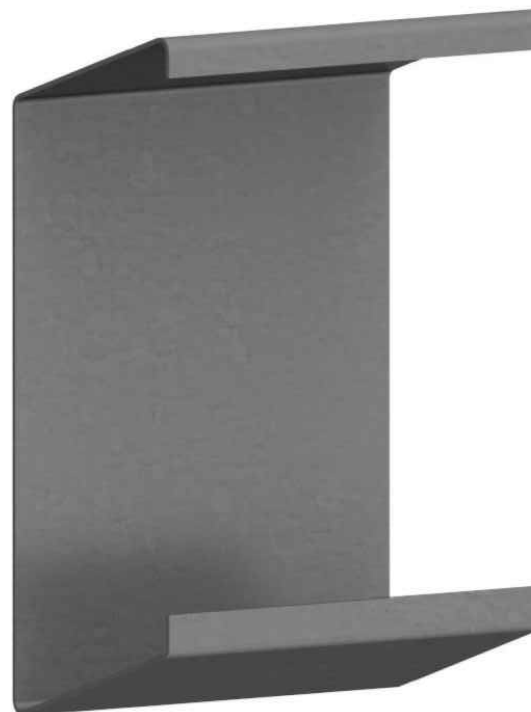
- S = Stud (C Shaped)
- L = Lintel (L Shaped)
- T = Track (U Shaped)
- W = I-Beam (I Shaped)
- E = Eave Strut (C Shaped)
- D = Double Eave Strut
- A = Angle (2 Legs, 1 Angle)
- F = Hat (Top Hat Shaped)
- B = Box (Rectangle Shaped)
- FI = Strap/Flat (Flat Shaped)
- Z = Zee (Z Shaped)

Mill - Gauge Bend Radius

25 mill = 24 gauge	.0764
30 mill = 22 gauge	.0796
33 mill = 20 gauge	.0764
43 mill = 18 gauge	.0712
54 mill = 16 gauge	.0849
68 mill = 14 gauge	.1069
97 mill = 12 gauge	.1325



*Angle of Eave Strut needs to be specified.
Example has a $\frac{3}{12}$ pitch.



800E350

Steel Members Documentation

12" x 3.5" Eave Strut Double Slope



6195 Hwy 52 East
Murrayville GA, 30564
www.BMMetals.com
Office: (706) 864-6068
Fax: (706) 864-2147

Member specs and limits

Name:	1200DE350
Depth:	12"
Flange:	3.5"
Lip:	.5"
Lengths:	6' - 60'
Gauges:	16, 14, 12

Name Breakdown

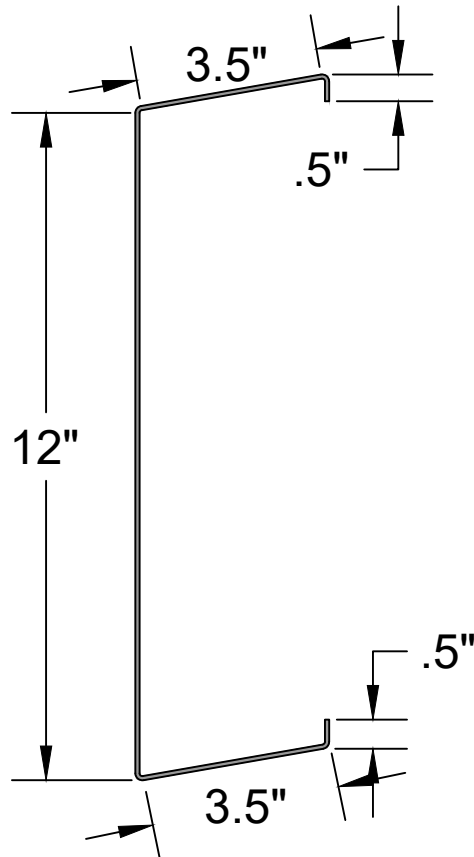
1050L162 - 43			
Depth in Inches 1050 = 10.50"	Member Key	Flange Height 162 = 1.625"	Mill Thickness

Member Key

- S** = Stud (C Shaped)
- L** = Lintel (L Shaped)
- T** = Track (U Shaped)
- W** = I-Beam (I Shaped)
- E** = Eave Strut (C Shaped)
- D** = Double Eave Strut
- A** = Angle (2 Legs, 1 Angle)
- F** = Hat (Top Hat Shaped)
- B** = Box (Rectangle Shaped)
- FI** = Strap/Flat (Flat Shaped)
- Z** = Zee (Z Shaped)

Mill - Gauge	Bend Radius
--------------	-------------

25 mill = 24 gauge	.0764
30 mill = 22 gauge	.0796
33 mill = 20 gauge	.0764
43 mill = 18 gauge	.0712
54 mill = 16 gauge	.0849
68 mill = 14 gauge	.1069
97 mill = 12 gauge	.1325



*Angle of Eave Strut needs to be specified.
Example has a $\frac{3}{12}$ pitch.



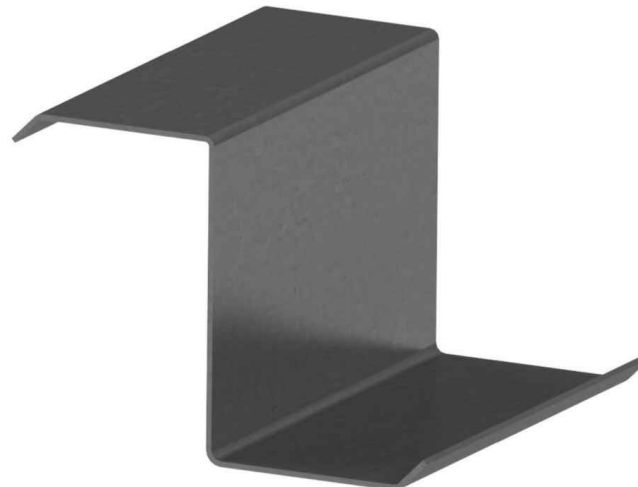
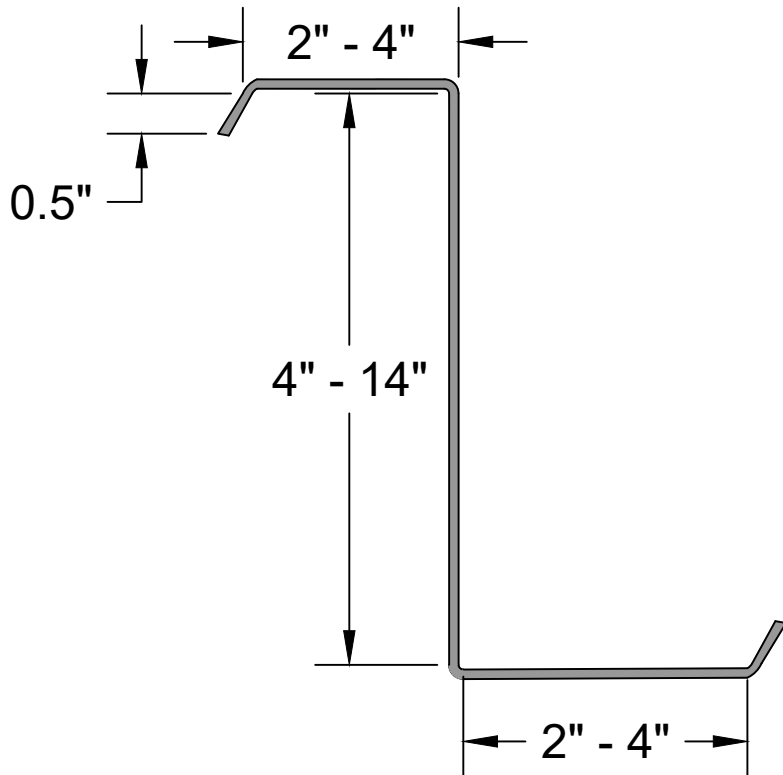
1200E350



Z Purlin Brochure Galvanized

Steel Members Documentation

Custom Z's

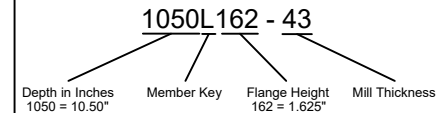


6195 Hwy 52 East
 Murrayville GA, 30564
www.BMMetals.com
 Office: (706) 864-6068
 Fax: (706) 864-2147

Member specs and limits

Name:	DepthZFlange
Depth:	4" - 14"
Flange:	2" - 4"
Lip:	.5"
Lengths:	6' - 60'
Gauges:	16, 14, 12

Name Breakdown



Member Key

- S = Stud (C Shaped)
- L = Lintel (L Shaped)
- T = Track (U Shaped)
- W = I-Beam (I Shaped)
- E = Eave Strut (C Shaped)
- D = Double Eave Strut
- A = Angle (2 Legs, 1 Angle)
- F = Hat (Top Hat Shaped)
- B = Box (Rectangle Shaped)
- Fl = Strap/Flat (Flat Shaped)
- Z = Zee (Z Shaped)

Mill - Gauge Bend Radius

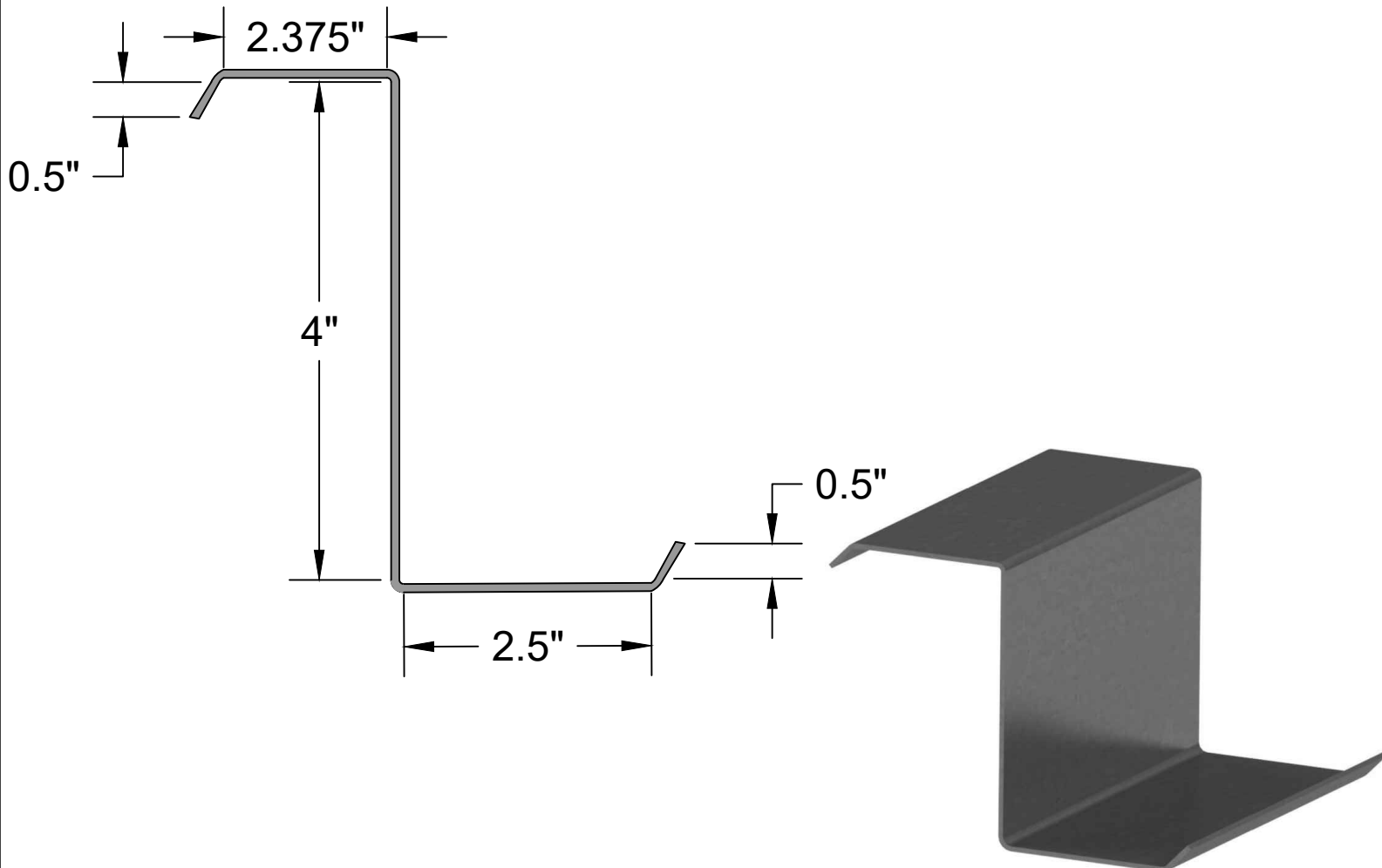
25 mill = 24 gauge	.0764
30 mill = 22 gauge	.0796
33 mill = 20 gauge	.0764
43 mill = 18 gauge	.0712
54 mill = 16 gauge	.0849
68 mill = 14 gauge	.1069
97 mill = 12 gauge	.1325

* All members shown in 14 gauge to show detail

CUSTOM_Z_PURLIN

Steel Members Documentation

4" x 2 1/2" Zee



6195 Hwy 52 East
Murrayville GA, 30564
www.BMMetals.com
Office: (706) 864-6068
Fax: (706) 864-2147

Member specs and limits

Name: 400Z250
Depth: 4"
Flange: 2.5"
Lip: .5"
Lengths: 6' - 60'
Gauges: 16, 14, 12

Name Breakdown

1050L162 - 43

Depth in Inches: 1050 = 10.50"
Member Key: L
Flange Height: 162 = 1.625"
Mill Thickness: 43

Member Key

- S = Stud (C Shaped)
- L = Lintel (L Shaped)
- T = Track (U Shaped)
- W = I-Beam (I Shaped)
- E = Eave Strut (C Shaped)
- D = Double Eave Strut
- A = Angle (2 Legs, 1 Angle)
- F = Hat (Top Hat Shaped)
- B = Box (Rectangle Shaped)
- FI = Strap/Flat (Flat Shaped)
- Z = Zee (Z Shaped)

Member Name	G	ksi	Area	Weight	Width	Gross Properties (x)			Gross Properties (y)			Torsional Properties		
						lx	Sx	rx	ly	Sy	ry	J	Cw	Ro
400Z250-54	16	50	0.598	2.035	5.06	1.699	0.850	1.686	1.028	0.406	1.311	0.00071	4.114	2.136
400Z250-68	14	50	0.747	2.542	5.07	2.123	1.061	1.686	1.295	0.510	1.317	0.00139	5.179	2.139
400Z250-97	12	50	1.046	3.559	5.10	2.973	1.486	1.686	1.842	0.720	1.327	0.00382	7.366	2.145

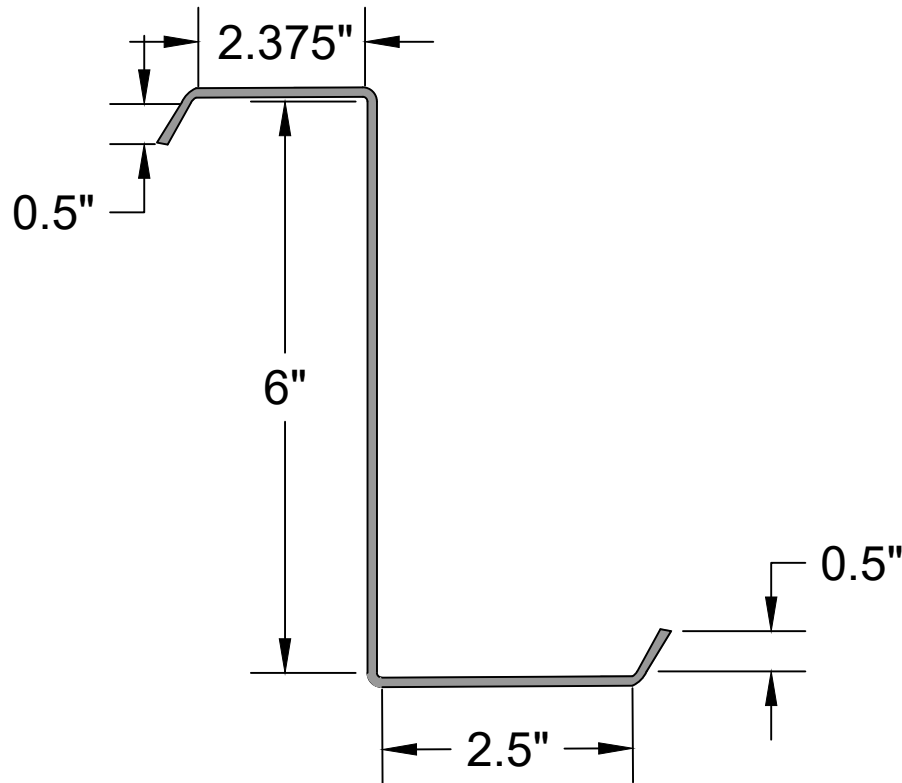
Mill - Gauge	Bend Radius
25 mill = 24 gauge	.0764
30 mill = 22 gauge	.0796
33 mill = 20 gauge	.0764
43 mill = 18 gauge	.0712
54 mill = 16 gauge	.0849
68 mill = 14 gauge	.1069
97 mill = 12 gauge	.1325

400Z250

*All calculations should be verified by licensed Engineer
** Full Sectional properties available upon request

Steel Members Documentation

6" x 2 1/2" Zee

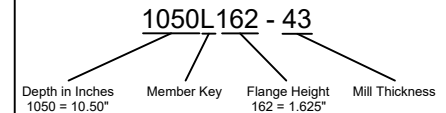


6195 Hwy 52 East
Murrayville GA, 30564
www.BMMetals.com
Office: (706) 864-6068
Fax: (706) 864-2147

Member specs and limits

Name:	600Z250
Depth:	6"
Flange:	2.5"
Lip:	.5"
Lengths:	6' - 60'
Gauges:	16, 14, 12

Name Breakdown



Member Key

- S** = Stud (C Shaped)
- L** = Lintel (L Shaped)
- T** = Track (U Shaped)
- W** = I-Beam (I Shaped)
- E** = Eave Strut (C Shaped)
- D** = Double Eave Strut
- A** = Angle (2 Legs, 1 Angle)
- F** = Hat (Top Hat Shaped)
- B** = Box (Rectangle Shaped)
- FI** = Strap/Flat (Flat Shaped)
- Z** = Zee (Z Shaped)

Member Name	Gross Properties (x)					Gross Properties (y)			Torsional Properties					
	G	ksi	Area	Weight	Width	Ix	Sx	rx	Iy	Sy	ry	J	Cw	Ro
600Z250-54	16	50	0.718	2.442	5.060	4.221	1.407	2.425	1.029	0.406	1.197	0.00086	9.256	2.705
600Z250-68	14	50	0.896	3.050	5.075	5.273	1.758	2.425	1.295	0.510	1.202	0.00167	11.65	2.707
600Z250-97	12	50	1.255	4.271	5.105	7.384	2.461	2.425	1.842	0.720	1.211	0.00458	16.58	2.711

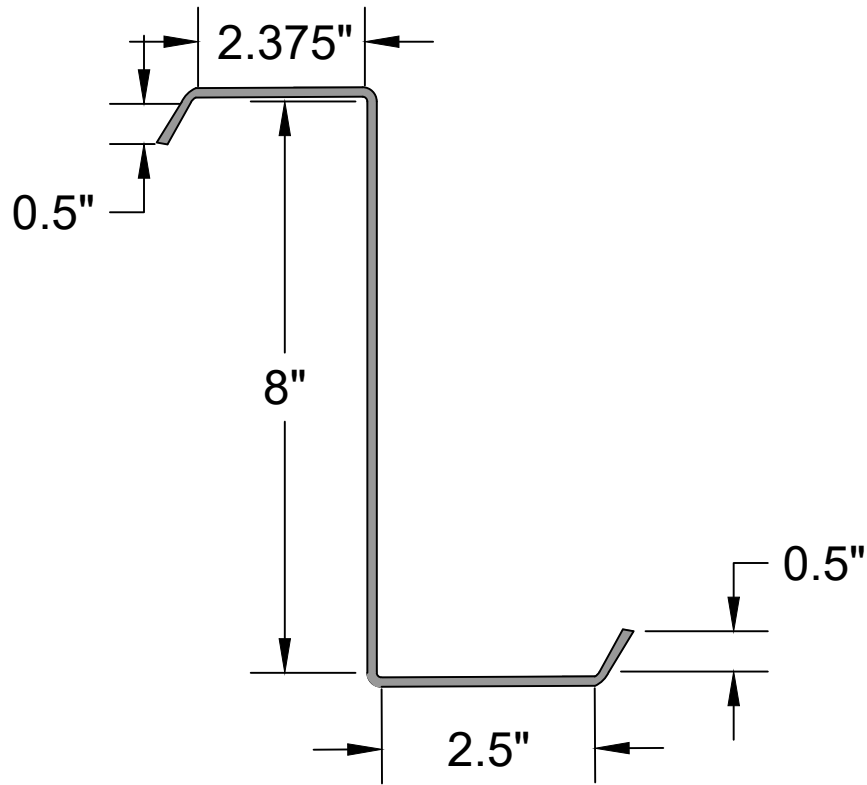
Mill - Gauge	Bend Radius
25 mill = 24 gauge	.0764
30 mill = 22 gauge	.0796
33 mill = 20 gauge	.0764
43 mill = 18 gauge	.0712
54 mill = 16 gauge	.0849
68 mill = 14 gauge	.1069
97 mill = 12 gauge	.1325

600Z250

*All calculations should be verified by licensed Engineer
** Full Sectional properties available upon request

Steel Members Documentation

8" x 2 1/2" Zee



6195 Hwy 52 East
Murrayville GA, 30564
www.BMMetals.com
Office: (706) 864-6068
Fax: (706) 864-2147

Member specs and limits

Name: 800Z250
Depth: 8"
Flange: 2.5"
Lip: .5"
Lengths: 6' - 60'
Gauges: 16,14,12

Name Breakdown

1050L162 - 43

Depth in Inches: 1050 = 10.50"
Member Key: L
Flange Height: 162 = 1.625"
Mill Thickness: 43

Member Key

S = Stud (C Shaped)
L = Lintel (L Shaped)
T = Track (U Shaped)
W = I-Beam (I Shaped)
E = Eave Strut (C Shaped)
D = Double Eave Strut
A = Angle (2 Legs, 1 Angle)
F = Hat (Top Hat Shaped)
B = Box (Rectangle Shaped)
Fl = Strap/Flat (Flat Shaped)
Z = Zee (Z Shaped)

Member Name	G	ksi	Area	Weight	Width	Gross Properties (x)			Gross Properties (y)			Torsional Properties		
						lx	Sx	rx	ly	Sy	ry	J	Cw	Ro
800Z250-54	16	50	0.837	2.849	5.060	8.178	2.044	3.125	1.029	0.406	1.108	0.00100	16.46	3.316
800Z250-68	14	50	1.046	3.559	5.075	10.22	2.554	3.125	1.295	0.510	1.113	0.00195	20.72	3.318
800Z250-97	12	50	1.464	4.983	5.105	14.30	3.576	3.125	1.842	0.721	1.122	0.00534	29.47	3.321

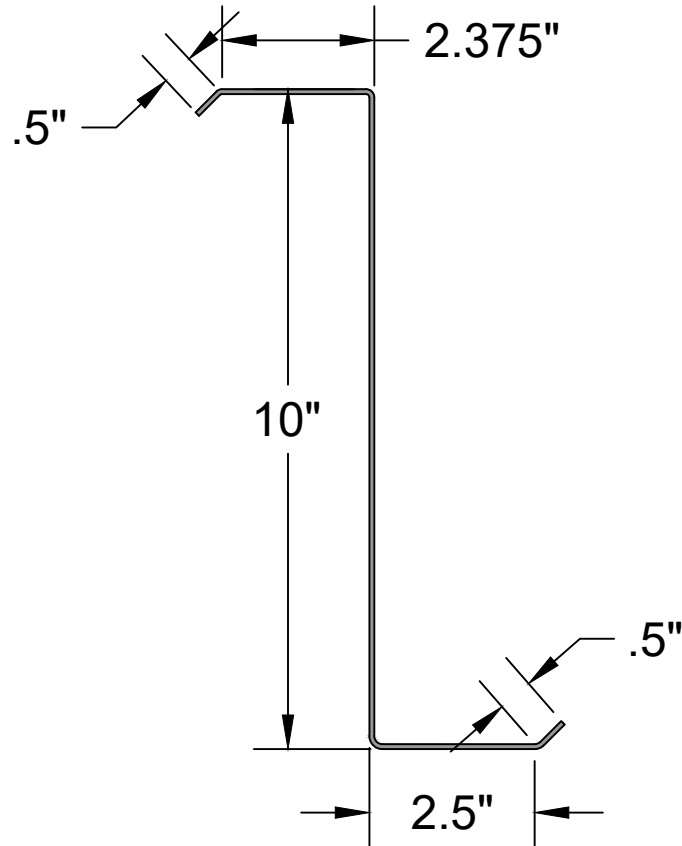
Mill - Gauge	Bend Radius
25 mill = 24 gauge	.0764
30 mill = 22 gauge	.0796
33 mill = 20 gauge	.0764
43 mill = 18 gauge	.0712
54 mill = 16 gauge	.0849
68 mill = 14 gauge	.1069
97 mill = 12 gauge	.1325

800Z250

*All calculations should be verified by licensed Engineer
** Full Sectional properties available upon request

Steel Members Documentation

10" x 2 1/2" Zee

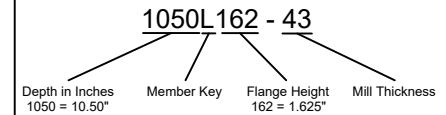


6195 Hwy 52 East
Murrayville GA, 30564
www.BMMetals.com
Office: (706) 864-6068
Fax: (706) 864-2147

Member specs and limits

Name:	1000Z250
Depth:	10"
Flange:	2.5"
Lip:	.5"
Lengths:	6' - 60'
Gauges:	16, 14, 12

Name Breakdown



Member Key

- S** = Stud (C Shaped)
- L** = Lintel (L Shaped)
- T** = Track (U Shaped)
- W** = I-Beam (I Shaped)
- E** = Eave Strut (C Shaped)
- D** = Double Eave Strut
- A** = Angle (2 Legs, 1 Angle)
- F** = Hat (Top Hat Shaped)
- B** = Box (Rectangle Shaped)
- FI** = Strap/Flat (Flat Shaped)
- Z** = Zee (Z Shaped)

Member Name	Gross Properties (x)					Gross Properties (y)			Torsional Properties					
	G	ksi	Area	Weight	Width	I _x	S _x	r _x	I _y	S _y	r _y	J	C _w	R _o
1000Z250-54	16	50	0.957	3.256	5.060	13.81	2.762	3.799	1.029	0.406	1.037	0.00114	25.71	3.938
1000Z250-68	14	50	1.195	4.07	5.075	17.25	3.450	3.799	1.295	0.510	1.041	0.00222	32.37	3.939
1000Z250-97	12	50	1.674	5.695	5.105	24.15	4.831	3.799	1.842	0.721	1.049	0.00610	46.05	3.941

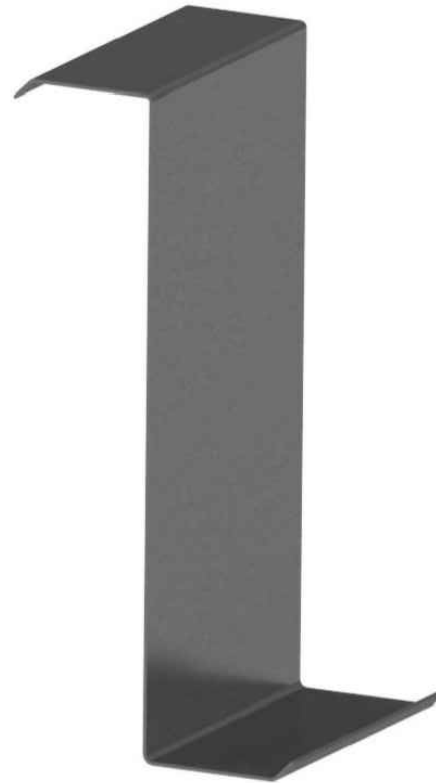
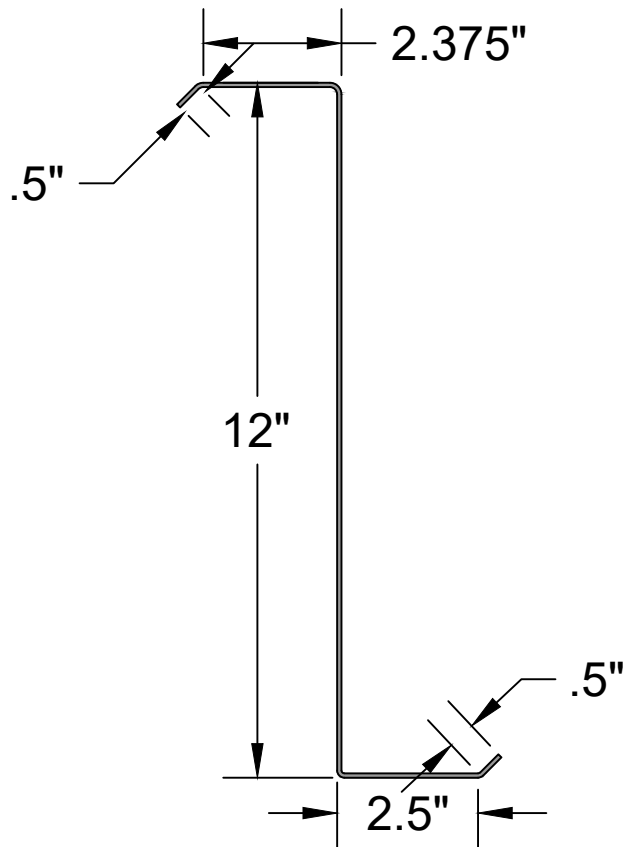
Mill - Gauge	Bend Radius
25 mill = 24 gauge	.0764
30 mill = 22 gauge	.0796
33 mill = 20 gauge	.0764
43 mill = 18 gauge	.0712
54 mill = 16 gauge	.0849
68 mill = 14 gauge	.1069
97 mill = 12 gauge	.1325

1000Z250

*All calculations should be verified by licensed Engineer
** Full Sectional properties available upon request

Steel Members Documentation

12" x 2 1/2" Zee



6195 Hwy 52 East
Murrayville GA, 30564
www.BMMetals.com
Office: (706) 864-6068
Fax: (706) 864-2147

Member specs and limits

Name: 1200Z250
Depth: 12"
Flange: 2.5"
Lip: .5"
Lengths: 6' - 60'
Gauges: 16,14,12

Name Breakdown

1050L162 - 43

Depth in Inches: 1050 = 10.50"
Member Key: L
Flange Height: 162 = 1.625"
Mill Thickness: 43

Member Key

S = Stud (C Shaped)
L = Lintel (L Shaped)
T = Track (U Shaped)
W = I-Beam (I Shaped)
E = Eave Strut (C Shaped)
D = Double Eave Strut
A = Angle (2 Legs, 1 Angle)
F = Hat (Top Hat Shaped)
B = Box (Rectangle Shaped)
FI = Strap/Flat (Flat Shaped)
Z = Zee (Z Shaped)

Member Name	G	ksi	Gross Properties (x)			Gross Properties (y)			Torsional Properties					
			Area	Weight	Width	I _x	S _x	r _x	I _y	S _y	r _y	J	C _w	R _o
1200Z250-54	16	50	1.076	3.663	5.060	21.35	3.559	4.454	1.029	0.406	0.978	0.00128	37.03	4.560
1200Z250-68	14	50	1.345	4.575	5.075	26.67	4.446	4.454	1.295	0.510	0.981	0.00250	46.62	4.561
1200Z250-97	12	50	1.883	6.407	5.105	37.35	6.225	4.454	1.842	0.721	0.989	0.00687	66.32	4.563

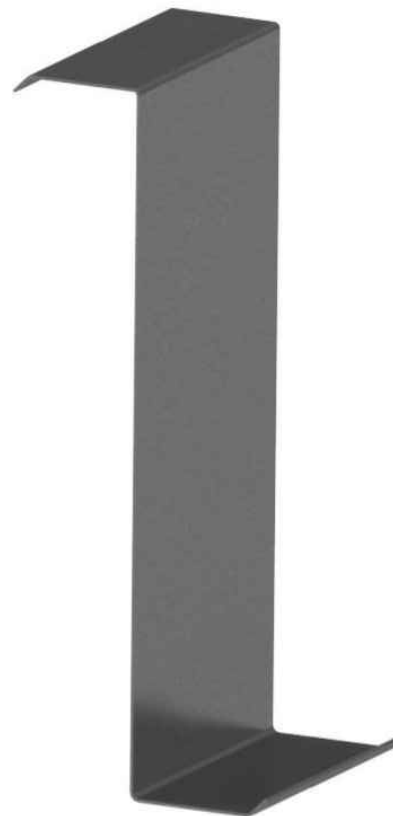
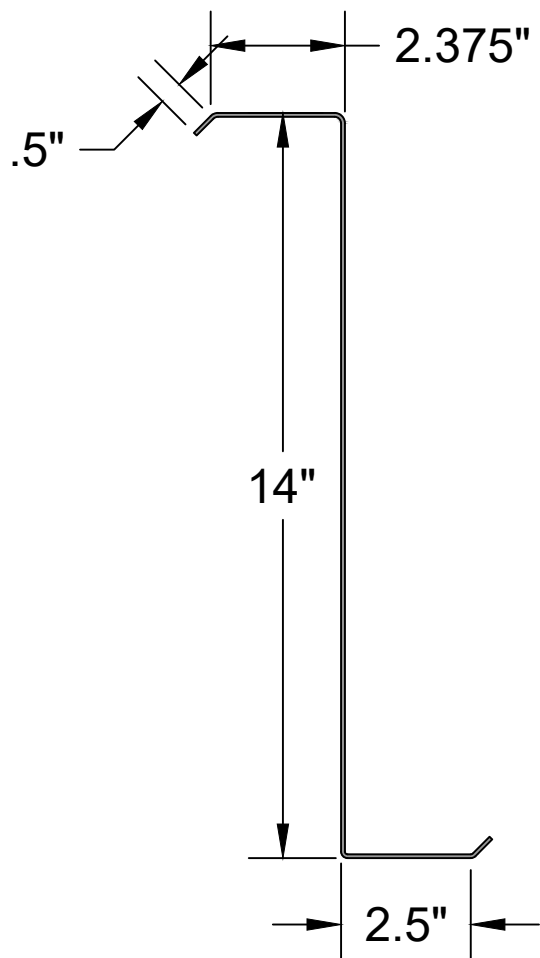
Mill - Gauge	Bend Radius
25 mill = 24 gauge	.0764
30 mill = 22 gauge	.0796
33 mill = 20 gauge	.0764
43 mill = 18 gauge	.0712
54 mill = 16 gauge	.0849
68 mill = 14 gauge	.1069
97 mill = 12 gauge	.1325

1200Z250

*All calculations should be verified by licensed Engineer
** Full Sectional properties available upon request

Steel Members Documentation

14" x 2 1/2" Zee



6195 Hwy 52 East
Murrayville GA, 30564
www.BMMetals.com
Office: (706) 864-6068
Fax: (706) 864-2147

Member specs and limits

Name: 1400Z250
Depth: 14"
Flange: 2.5"
Lip: .5"
Lengths: 6' - 60'
Gauges: 16, 14, 12

Name Breakdown

1050L162 - 43

Depth in Inches: 1050 = 10.50"
Member Key: L
Flange Height: 162 = 1.625"
Mill Thickness: 43

Member Key

S = Stud (C Shaped)
L = Lintel (L Shaped)
T = Track (U Shaped)
W = I-Beam (I Shaped)
E = Eave Strut (C Shaped)
D = Double Eave Strut
A = Angle (2 Legs, 1 Angle)
F = Hat (Top Hat Shaped)
B = Box (Rectangle Shaped)
Fl = Strap/Flat (Flat Shaped)
Z = Zee (Z Shaped)

Member Name	G	ksi	Area	Weight	Width	Gross Properties (x)			Gross Properties (y)			Torsional Properties		
						Ix	Sx	rx	Iy	Sy	ry	J	Cw	Ro
1400Z250-54	16	50	1.196	4.070	5.060	31.05	4.436	5.095	1.029	0.406	0.927	0.00143	50.40	5.179
1400Z250-68	14	50	1.494	5.084	5.075	38.79	5.541	5.095	1.295	0.510	0.931	0.00278	63.46	5.180
1400Z250-97	12	50	2.092	7.119	5.105	54.31	7.759	5.095	1.843	0.721	0.939	0.00763	90.28	5.181

Mill - Gauge	Bend Radius
25 mill = 24 gauge	.0764
30 mill = 22 gauge	.0796
33 mill = 20 gauge	.0764
43 mill = 18 gauge	.0712
54 mill = 16 gauge	.0849
68 mill = 14 gauge	.1069
97 mill = 12 gauge	.1325

1400Z250

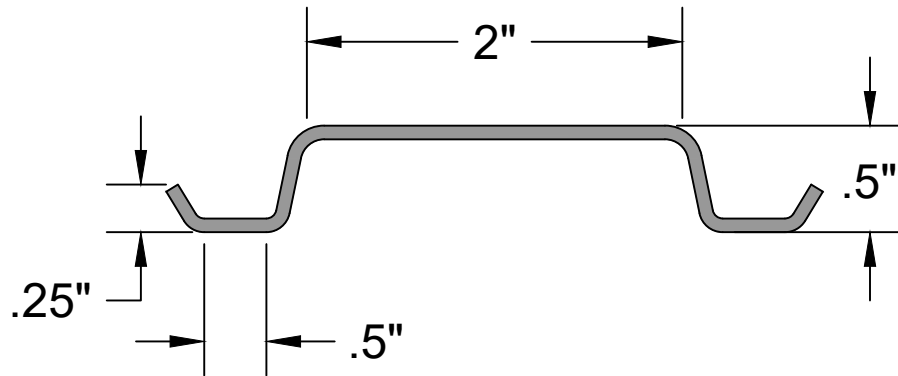
*All calculations should be verified by licensed Engineer
** Full Sectional properties available upon request



Hat Channel Brochure Galvanized

Steel Members Documentation

1/2" Hat Channel

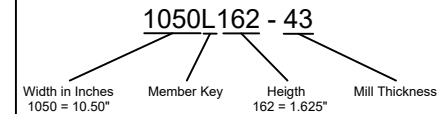


6195 Hwy 52 East
Murrayville GA, 30564
www.BMMetals.com
Office: (706) 864-6068
Fax: (706) 864-2147

Member specs and limits

Name:	200F050
Width	3.5"
Height:	.5"
Web:	.25"
Lengths:	6" - 50'
Gauges:	20,18,16

Name Breakdown



Member Key

- S** = Stud (C Shaped)
- L** = Lintel (L Shaped)
- T** = Track (U Shaped)
- W** = I-Beam (I Shaped)
- E** = Eave Strut (C Shaped)
- D** = Double Eave Strut
- A** = Angle (2 Legs, 1 Angle)
- F** = Hat (Top Hat Shaped)
- B** = Box (Rectangle Shaped)
- Fl** = Strap/Flat (Flat Shaped)
- Z** = Zee (Z Shaped)

* All members shown in 14 gauge to show detail

Member	Gauge	Fy (ksi)	Area (in ²)	Weight (lbs/ft)	Gross Properties					Effective Properties			Coil
					I _x (in ⁴)	S _x (in ³)	R _x (in)	I _y (in ⁴)	R _y (in)	I _x (in ⁴)	M _d (ft-lb)	M _{da} (ft-lb)	Flat Width
200F050-33	20	50	.1055	.428	.00392	.01625	.19278	.03777	.59821	.00392	NA	NA	4.25
200F050-43	18	50	.1347	.528	.00480	.01979	.18877	.04668	.58857	.04668	NA	NA	4.25
200F050-54	16	50	.1623	.622	.00544	.02221	.18314	.05393	.57635	.00544	NA	NA	4.25
											Nominal	4.25	

Mill - Gauge	Bend Radius
25 mill = 24 gauge	.0764
30 mill = 22 gauge	.0796
33 mill = 20 gauge	.0764
43 mill = 18 gauge	.0712
54 mill = 16 gauge	.0849
68 mill = 14 gauge	.1069
97 mill = 12 gauge	.1325

200F050

*All calculations based on unpunched stud
** Full Sectional properties available upon request

Steel Members Documentation

1/2" Hat Channel



6195 Hwy 52 East
Murrayville GA, 30564
www.BMMetals.com
Office: (706) 864-6068
Fax: (706) 864-2147

Member specs and limits

Name: 100F050
Width: 2.5"
Height: .5"
Web: .25"
Lengths: 6" - 50"
Gauges: 20, 18, 16

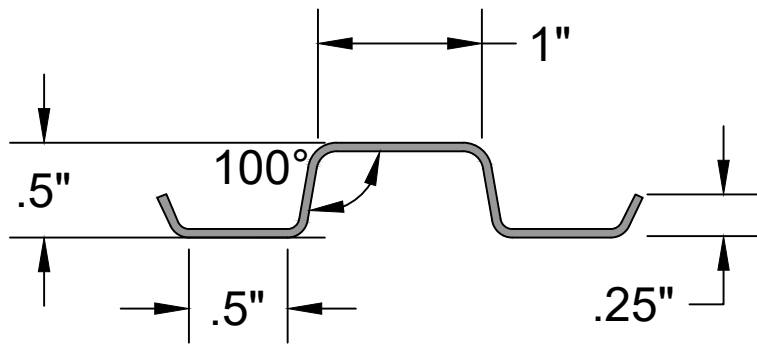
Name Breakdown

1050L162 - 43

Width in Inches: 1050 = 10.50"
Member Key: L
Height: 162 = 1.625"
Mill Thickness: 43

Member Key

- S = Stud (C Shaped)
- L = Lintel (L Shaped)
- T = Track (U Shaped)
- W = I-Beam (I Shaped)
- E = Eave Strut (C Shaped)
- D = Double Eave Strut
- A = Angle (2 Legs, 1 Angle)
- F = Hat (Top Hat Shaped)
- B = Box (Rectangle Shaped)
- FI = Strap/Flat (Flat Shaped)
- Z = Zee (Z Shaped)



* All members shown in 14 gauge to show detail

Member	Gauge	Fy (ksi)	Area (in ²)	Weight (lbs/ft)	Gross Properties					Effective Properties			Coil
					I _x (in ⁴)	S _x (in ³)	R _x (in)	I _y (in ⁴)	R _y (in)	I _x (in ⁴)	M _d (ft-lb)	M _{da} (ft-lb)	Flat Width
100F050-33	20	50	.1055	.358	.00392	.01625	.19278	.03777	.59821	.00392	NA	NA	3.25
100F050-43	18	50	.1347	.468	.00480	.01979	.18877	.04668	.58857	.04668	NA	NA	3.25
100F050-54	16	50	.1623	.552	.00544	.02221	.18314	.05393	.57635	.00544	NA	NA	3.25
											Nominal	3.25	

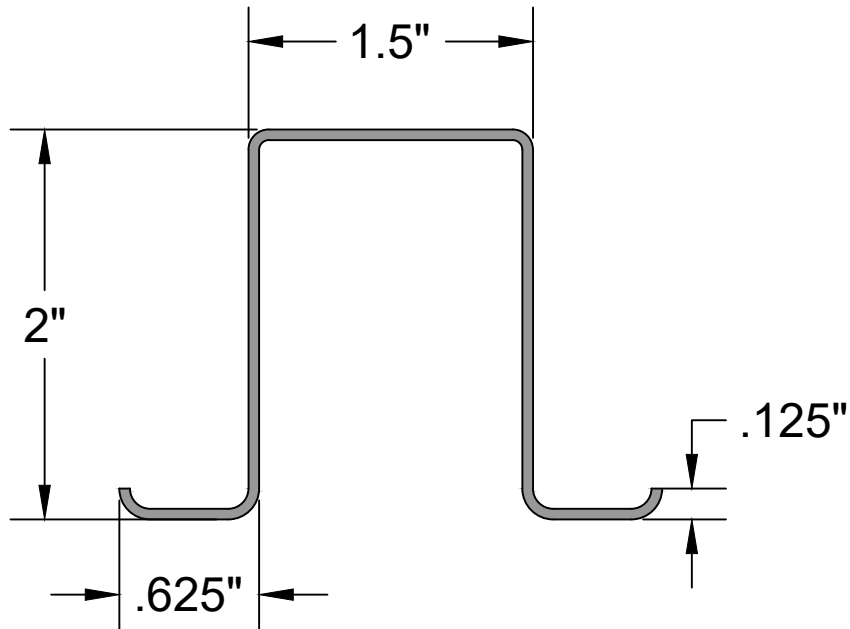
Mill - Gauge	Bend Radius
25 mill = 24 gauge	.0764
30 mill = 22 gauge	.0796
33 mill = 20 gauge	.0764
43 mill = 18 gauge	.0712
54 mill = 16 gauge	.0849
68 mill = 14 gauge	.1069
97 mill = 12 gauge	.1325

100F050

*All calculations based on unpunched stud
** Full Sectional properties available upon request

Steel Members Documentation

2" Hat Channel

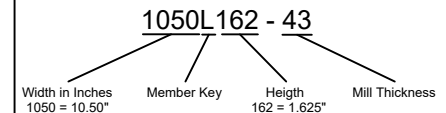


6195 Hwy 52 East
Murrayville GA, 30564
www.BMMetals.com
Office: (706) 864-6068
Fax: (706) 864-2147

Member specs and limits

Name:	150F200
Width:	2.75"
Height:	2"
Web:	.5"
Lengths:	6' - 60'
Gauges:	26, 24, 22, 20, 18, 16

Name Breakdown



Member Key

- S** = Stud (C Shaped)
- L** = Lintel (L Shaped)
- T** = Track (U Shaped)
- W** = I-Beam (I Shaped)
- E** = Eave Strut (C Shaped)
- D** = Double Eave Strut
- A** = Angle (2 Legs, 1 Angle)
- F** = Hat (Top Hat Shaped)
- B** = Box (Rectangle Shaped)
- FI** = Strap/Flat (Flat Shaped)
- Z** = Zee (Z Shaped)

* All members shown in 14 gauge to show detail

Member	Gauge	Fy (ksi)	Area (in ²)	Weight (lbs/ft)	Gross Properties					Effective Properties			Coil
					I _x (in ⁴)	S _x (in ³)	R _x (in)	I _y (in ⁴)	R _y (in)	I _x (in ⁴)	M _d (ft-lb)	M _{da} (ft-lb)	Flat Width
150F200-18	26	50	.0732	.442	.02171	.02531	.6112	.05162	.9621	.00911	NA	NA	6.75"
150F200-25	24	50	.1130	.552	.04062	.04822	.5994	.10362	.9573	.01011	NA	NA	6.75"
150F200-30	22	50	.1691	.663	.05998	.07120	.5955	.15334	.9522	.02043	NA	NA	6.75"
150F200-33	20	50	.2059	.840	.07239	.08594	.5930	.18535	.9488	.03051	NA	NA	6.75"
150F200-43	18	50	.2664	1.06	.09235	.10964	.5887	.23704	.9431	.05667	NA	NA	6.75"
150F200-54	16	50	.3299	1.26	.11211	.13301	.5829	.28951	.9367	.07509	NA	NA	6.75"
											Nominal	6.75"	

Mill - Gauge	Bend Radius
25 mill = 24 gauge	.0764
30 mill = 22 gauge	.0796
33 mill = 20 gauge	.0764
43 mill = 18 gauge	.0712
54 mill = 16 gauge	.0849
68 mill = 14 gauge	.1069
97 mill = 12 gauge	.1325

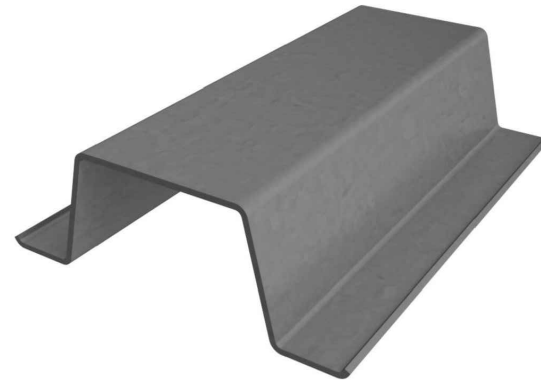
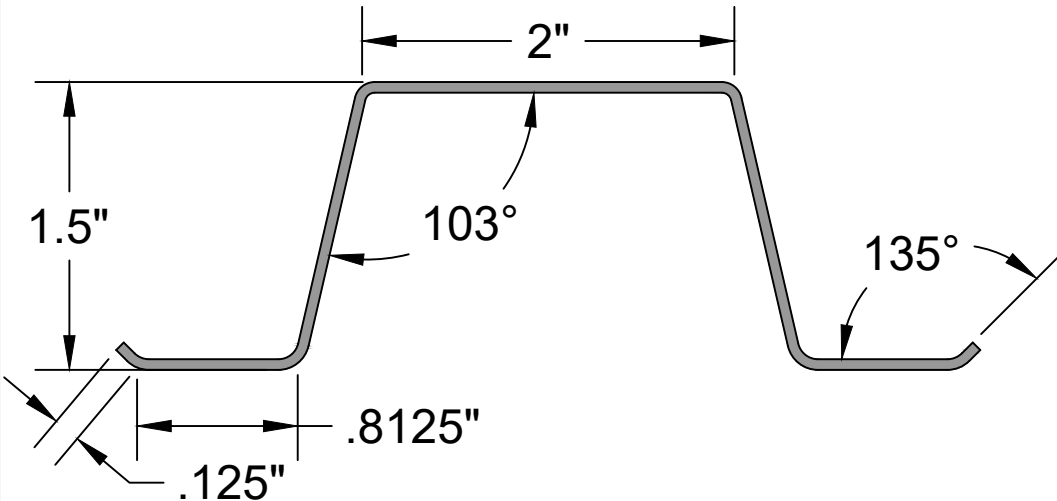
150F200

*All calculations based on unpunched stud

** Full Sectional properties available upon request

Steel Members Documentation

1 1/2" Hat Channel

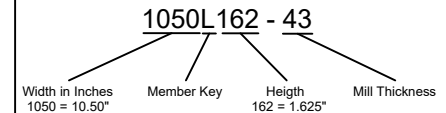


6195 Hwy 52 East
Murrayville GA, 30564
www.BMMetals.com
Office: (706) 864-6068
Fax: (706) 864-2147

Member specs and limits

Name:	200F150
Width	3.75"
Height:	1.5"
Web:	.5"
Lengths:	6' - 60'
Gauges:	26,24,22,20

Name Breakdown



Member Key

- S** = Stud (C Shaped)
- L** = Lintel (L Shaped)
- T** = Track (U Shaped)
- W** = I-Beam (I Shaped)
- E** = Eave Strut (C Shaped)
- D** = Double Eave Strut
- A** = Angle (2 Legs, 1 Angle)
- F** = Hat (Top Hat Shaped)
- B** = Box (Rectangle Shaped)
- FI** = Strap/Flat (Flat Shaped)
- Z** = Zee (Z Shaped)

* All members shown in 14 gauge to show detail

Member	Gauge	F _y (ksi)	Area (in ²)	Weight (lbs/ft)	Gross Properties					Effective Properties			Coil
					I _x (in ⁴)	S _x (in ³)	R _x (in)	I _y (in ⁴)	R _y (in)	I _x (in ⁴)	M _d (ft-lb)	M _{da} (ft-lb)	Flat Width
200F150-18	26	50	.1273	.478	.07697	.07546	.7776	.14977	1.0846	.0176	NA	NA	6.75"
200F150-25	24	50	.1760	.637	.10567	.10385	.7747	.20568	1.0808	.0334	NA	NA	6.75"
200F150-30	22	50	.1990	.765	.11911	.12124	.7735	.23172	1.0789	.0429	NA	NA	6.75"
200F150-33	20	50	.2426	.967	.14420	.14175	.7711	.28050	1.0753	.0676	NA	NA	6.75"
											Nominal	6.75"	

Mill - Gauge	Bend Radius
25 mill = 24 gauge	.0764
30 mill = 22 gauge	.0796
33 mill = 20 gauge	.0764
43 mill = 18 gauge	.0712
54 mill = 16 gauge	.0849
68 mill = 14 gauge	.1069
97 mill = 12 gauge	.1325

200F150

*All calculations based on unpunched stud

** Full Sectional properties available upon request