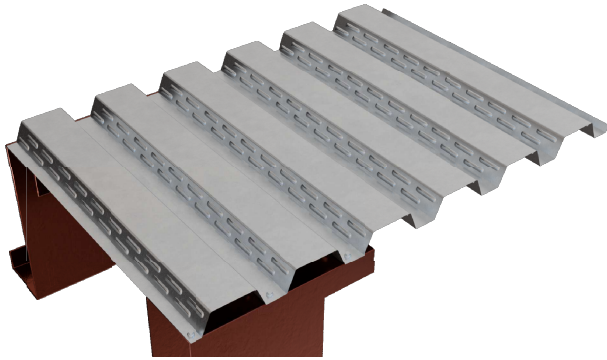


## Dimpled B Decking

## Product Data



Applications

Used primarily as a structural base for floors (composite with concrete) and roofs (supporting insulation/roofing) in commercial buildings, mezzanines, and multi-story structures.

Substrates

Open framing, supporting steel joists

Material

Standard - 24 GA. (50 to 55 ksi steel)

Optional - 16 GA., 18 GA., 20 GA., & 22 GA, (50 to 55 ksi steel)

Manufacturing

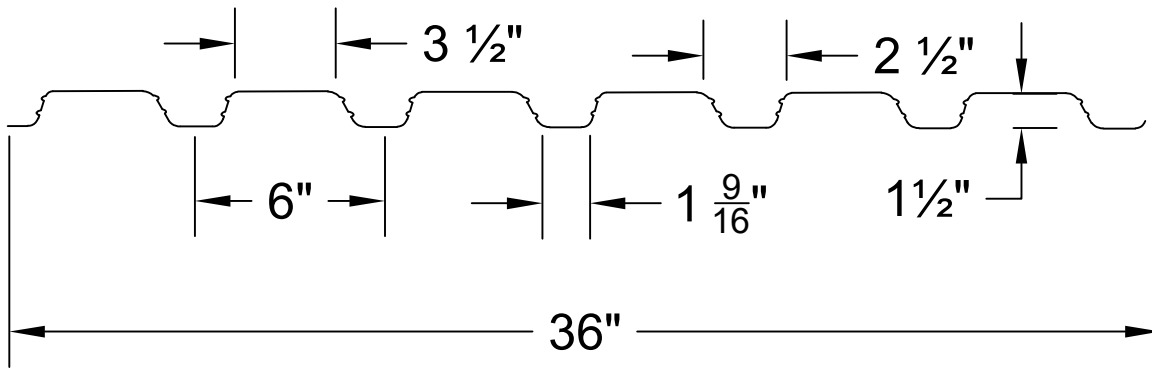
Roll formed in factory.

Finishes

Galvanized

NOTE:

All data represented on this sheet may not be applicable to all widths and gauges.



Section Properties

Deck Type	Design Thickness	W (psf)	Lp (in <sup>4</sup> /ft)	So (in <sup>3</sup> /ft)	Ln (in <sup>4</sup> /ft)	Sn (in <sup>3</sup> /ft)	Va (lbs/ft)	Fy (ksi)
B24	0.0239	1.4600	0.1070	0.1200	0.1350	0.1310	2634	60
B22	0.0295	1.7800	0.1550	0.1880	0.1830	0.1920	1818	33
B20	0.0358	2.1400	0.2010	0.2340	0.2220	0.2470	2193	33
B19	0.0418	2.4900	0.2460	0.2770	0.2600	0.2890	2546	33
B18	0.0474	2.8200	0.2890	0.3180	0.2950	0.3270	2870	33
B16	0.0598	3.5400	0.3730	0.4080	0.3730	0.4110	3578	33