

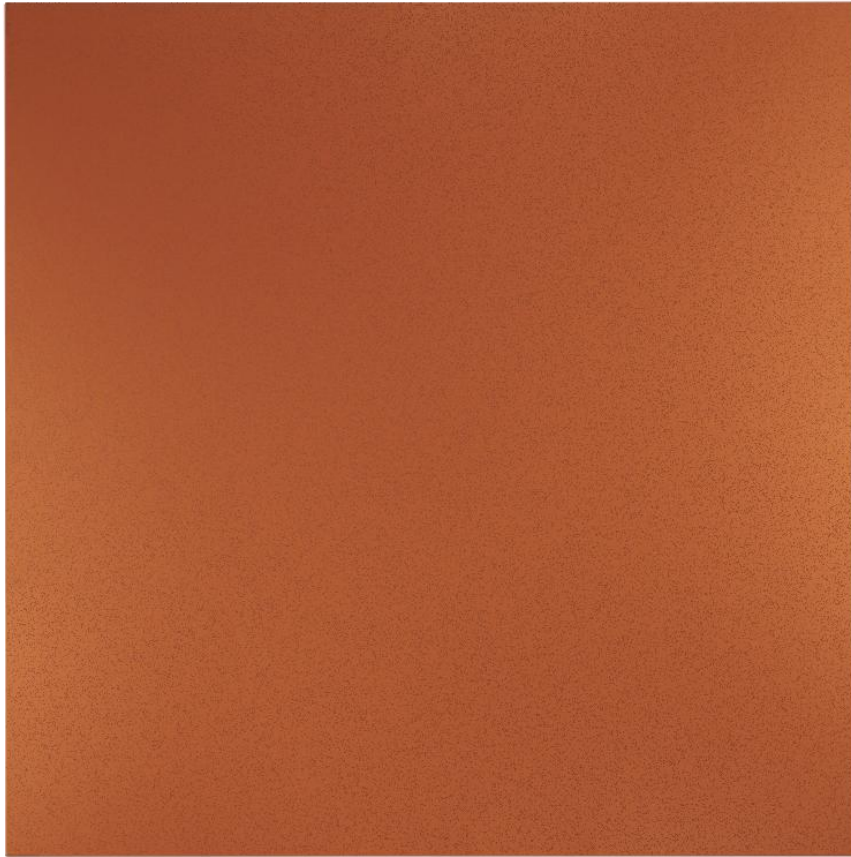
Painted steel. (Color shown is a dark green). Please select from available colors.
Available in Siliconized Polyester or Kynar 500 paint systems.



Acrylic Coated Galvalume (AZ55). Material comes with a 25 year warranty. The finish is initially duller than galvanized material.



Galvanized G90. Material is sold with no warranty. The sample shown here has a mid to large spangle design but can vary from run to run. Galvanized is initially shinier than Galvalume but weathers to a duller appearance over time.



Painted steel. (Color shown is Metallic Copper). Painted only with Kynar 500 paint. This color simulates an unweathered copper and contains small glitter-like metal flakes.



Cold Roll steel. This material is intended to rust. It has no rust inhibitors such as zinc or aluminum so it requires no preparation when a rusty appearance is desired. This material is typically run in heavier gauges (thicker material) to detour from penetration by rust.