

## What is it?

Cold Roll is our metal roofing stripped down to the basic material. It has a thin layer of oil and is much thicker than our standard 29 Gauge. This assures that it will take many years for the rust to penetrate the panel.

## Rust Progression



### 1 Day after first rain

Visibly there is only a slight difference but the rusting process has began.



### 3 Days after first rain

Rust is now visible and spreading.



### 10 Days after first rain

Light rust has almost covered the entire surface. This will be the longest rusting stage in the natural process.



### 20 Days after first rain

Rust has covered the entire surface of the metal.

\* Rust times may vary and are dependent upon many factors such as weather, roof pitch, etc. While we can attempt to estimate, it is impossible to predict the exact behavior of rust.



Cold Roll can also be pre-rusted. This process is only recommended for indoor applications.

## Location Info...

### B & M Metals (Main Office)

6195 Hwy. 52 E., Murrayville GA 30564

706-864-6068

Fax: 706-864-2147

Mon—Fri 7:00 to 4:30

### B & M Metals Cedartown

525 Piedmont Hwy, Cedartown GA 30125

678-246-0001

Fax: 678-246-0006

Mon—Friday 8:00 to 5:00

### North Georgia Metals & Vinyl

320 Maddox Drive, Ellijay GA 30540

706-276-1633

Fax: 706-276-1656

Mon—Fri 7:30 to 4:30

or check out our website at

[QualityMetalRoofing.com](http://QualityMetalRoofing.com)

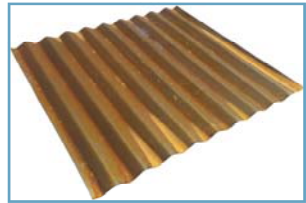




- Min slope: 3/12
- Coverage: 24"
- Rib Height: 1/4"
- Gauge: 26

**1 1/4" Corrugated**

- Min slope: 3/12
- Coverage: 24"
- Rib Height: 1/4"
- Gauge: 26



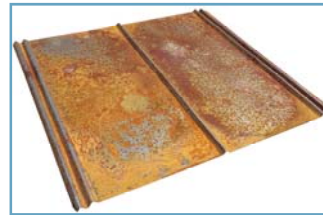
**2 1/2" Corrugated**



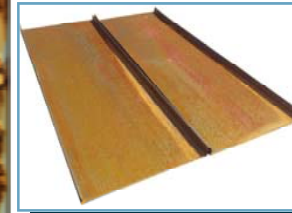
- Min slope: 3/12
- Coverage: 36"
- Rib Height: 3/4"
- Gauge: 26

**Tuff Rib**

- Min slope: 3/12
- Coverage: 24"
- Rib Height: 1/2"
- Gauge: 26



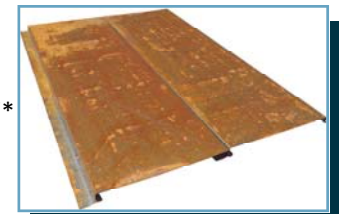
**5V**



- Min slope: 3/12
- Coverage: 16"\*
- Rib Height: 1"\*
- Gauge: 26

**Standing Seam**

- Coverage: 16"\*
- Gauge: 26



**Soffit**

\*Available in multiple dimensions, call for details



Corrugated metal roofing was one of the first metal roofing panels. This panel in Cold Roll offers a truly authentic rustic look.



Tuff Rib is our most popular panel for residential roofs. Shown above is our cold roll Tuff Rib panel.



Whether it's a barn, shed, or home, Rusted metal can give a classic look to any structure. Its the perfect way to have an old fashion rustic look while also having the reliability of a metal roof.