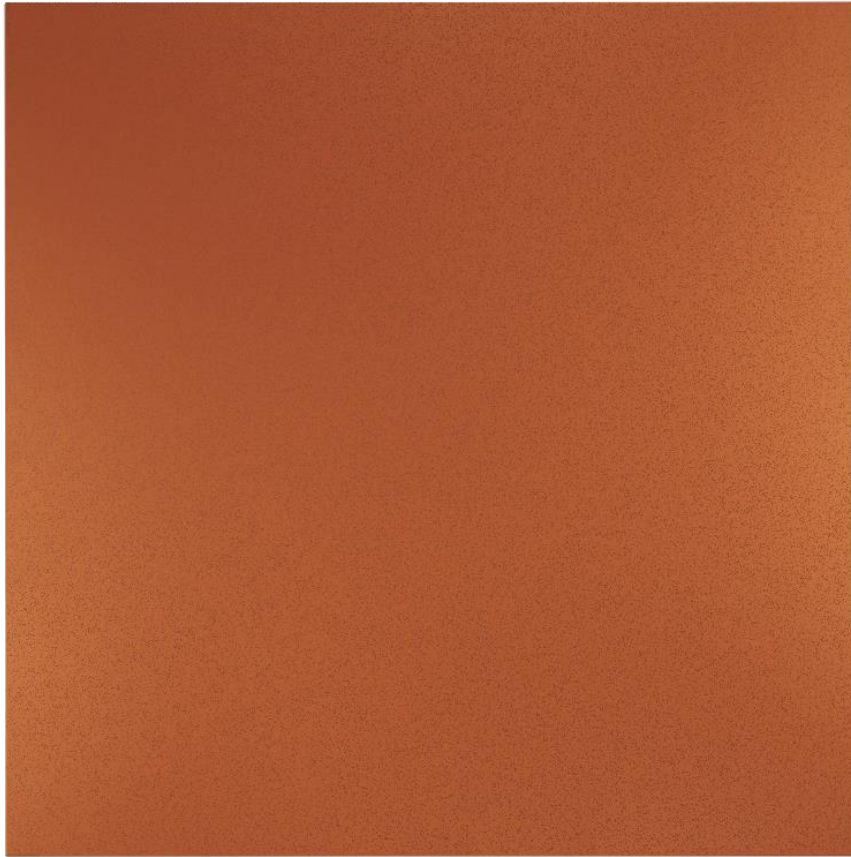


Painted steel. (Color shown is a dark green). Please select from available colors.
Available in Siliconized Polyester or Kynar 500 paint systems.



Acrylic Coated Galvalume (AZ55). Material comes with a 25 year warranty. The finish is initially duller than galvanized material.



Painted steel. (Color shown is Metallic Copper). Painted only with Kynar 500 paint. This color simulates an unweathered copper and contains small glitter-like metal flakes.



16 Ounce Copper. Copper initially appears shiny but over time will naturally turn to a dark bronze and or a patina green color.



Paint grip material (also known by other names such as phoscoate, zinc grip, galvaneal, etc.) is substrate that is intended to be painted. It typically has a G90 Galvanized protective coating and has a paintable surface. This material is useful when the color is yet to be determined prior to installation.



Cold Roll steel. This material is intended to rust. It has no rust inhibitors such as zinc or aluminum so it requires no preparation when a rusty appearance is desired. This material is typically run in heavier gauges (thicker material) to detour from penetration by rust.